

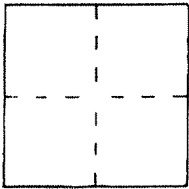
CORNER RECORD

Document Number APN 75-261-08

City of KENTFIELD

County of MARIN, California

Brief Legal Description SS Idlewood Road, Kentfield, Lot 579 13 R M 53, APN 75-261-08



CORNER TYPE

Government Corner  Control   
Meander  Property   
Rancho  Other   
Date of Survey \_\_\_\_\_

COORDINATES (Optional)

N \_\_\_\_\_  
E \_\_\_\_\_  
Zone \_\_\_\_\_ Datum \_\_\_\_\_  
Elev \_\_\_\_\_

Corner — Left as found  Found and tagged  Established  Reestablished  Rebuilt

Identification and type of corner found: Evidence used to identify or procedure used to establish or reestablish the corner:

See Sketch

A description of the physical condition of the monument as found and as set or reset:

See Sketch

SURVEYOR'S STATEMENT

This Corner Record was prepared by me or under my direction in conformance with the Land Surveyors Act on June 01 1998

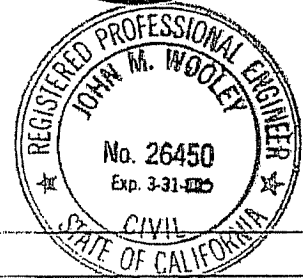
Signed Michael A. Brogan L.S. or R.C.E. Number LS 5767



COUNTY SURVEYOR'S STATEMENT

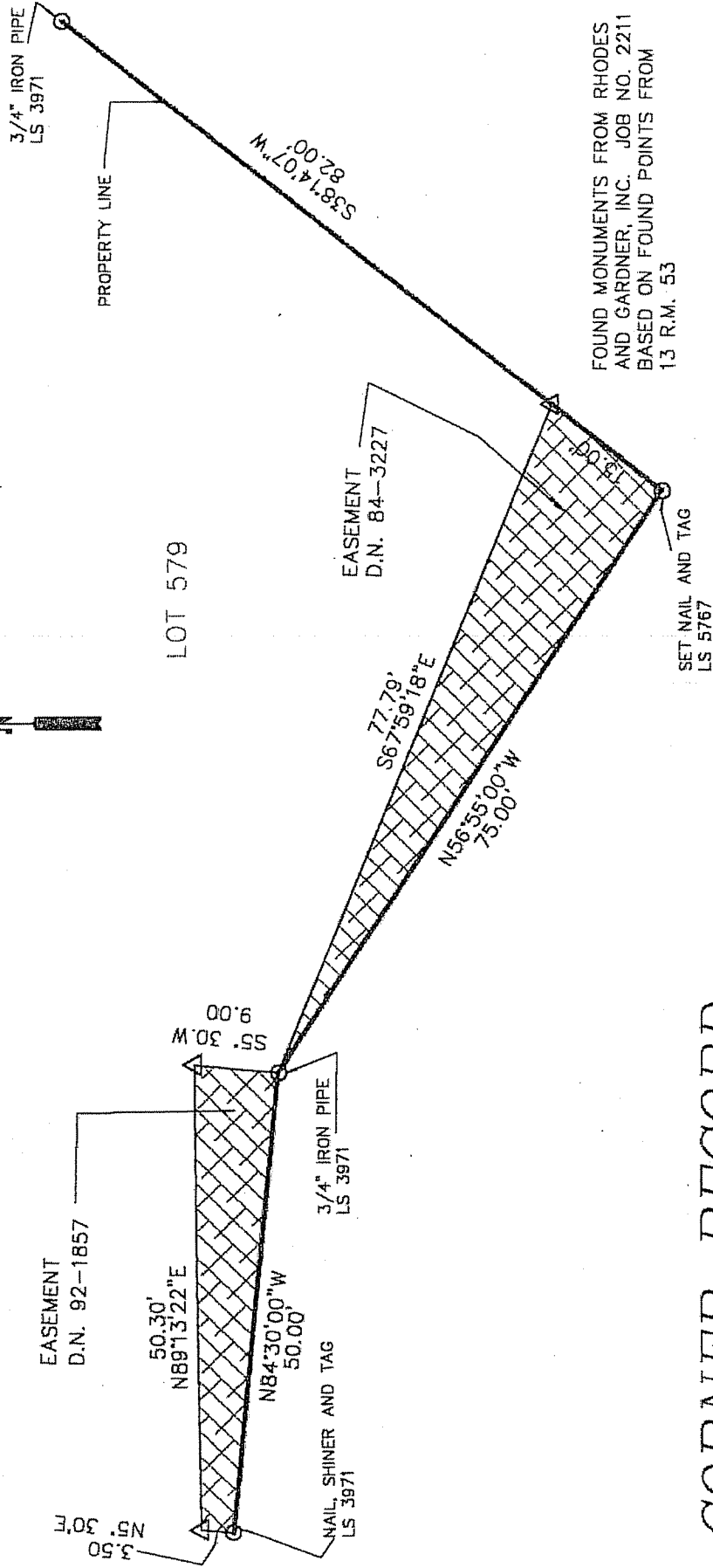
This Corner Record was received JUNE 2 1998 and examined and filed JUNE 3 1998.

Signed John M. Wooley Title DEPUTY



County Surveyor's Comment \_\_\_\_\_

- △ = SET 2"x2" HUB AND TACK
- = FOUND MONUMENTATION AS SHOWN EXCEPT AS NOTED



FOUND MONUMENTS FROM RHODES AND GARDNER, INC. JOB NO. 2211 BASED ON FOUND POINTS FROM 13 R.M. 53

# CORNER RECORD

LOT 579 13 R.M. 53

APN 75-261-08

LOT 578

M. BROGAN AND ASSOCIATES, INC.  
 319 MILLER AVE MILL VALLEY CA 94941  
 NOT TO SCALE

JOB NO. 5381 MAY 1998