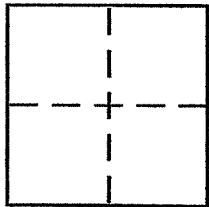


CORNER RECORD

Document Number 75-252-07

City of Kentfield County of MARIN, California

Brief Legal Description Portion of Lot 564, KENT WOODLANDS No. 17 12 MAPS 114



CORNER TYPE

Government Corner Control
Meander Property
Rancho Other
Date of Survey Nov 4 & 5, 2009

COORDINATES (Optional)

N. _____
E. _____
Zone _____ NAD27 NAD83
NAD83 Epoch _____
Elev. _____
Vert. Datum: NGVD29 NAVD88
Meas. Units: Metric Imperial

Corner -- Left as found Found and tagged Established Reestablished Rebuilt

Identification and type of corner found: Evidence used to identify or procedure used to establish or reestablish the corner:

See 2008 MAPS PAGE 80 DONE BY THIS OFFICE. THIS CORNER RECORD RETRACES THE Northerly Line of McCULLOUGH AS SHOWN PER SAID 2008 MAPS PAGE 80 & PLACES RANDOMLY SPACED SURVEY MARKERS ON SAID Northerly Line. See sketch on reverse side for details.

A description of the physical condition of the monument as found and as set or reset:

set 1/2" rebar with yellow plastic cap AFFIXED TO TOP OF REBAR, CAP STAMPED PLS 5379 SCRANTON with cap driven flush with SURROUNDING GRADE

SURVEYOR'S STATEMENT

This Corner Record was prepared by me or under my direction in conformance with

the Land Surveyors Act on Nov. 20 2009

Signed Douglas J. Scranton P.L.S or R.C.E. No. PLS 5379



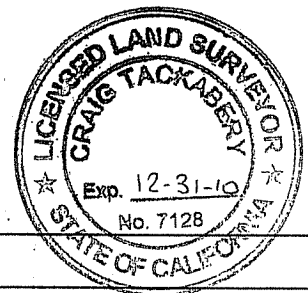
COUNTY SURVEYOR'S STATEMENT

This Corner Record was received NOVEMBER 30, 2009

and examined and filed JANUARY 4, 2010

Signed Ce P.L.S or R.C.E. No. 7128

Title COUNTY SURVEYOR

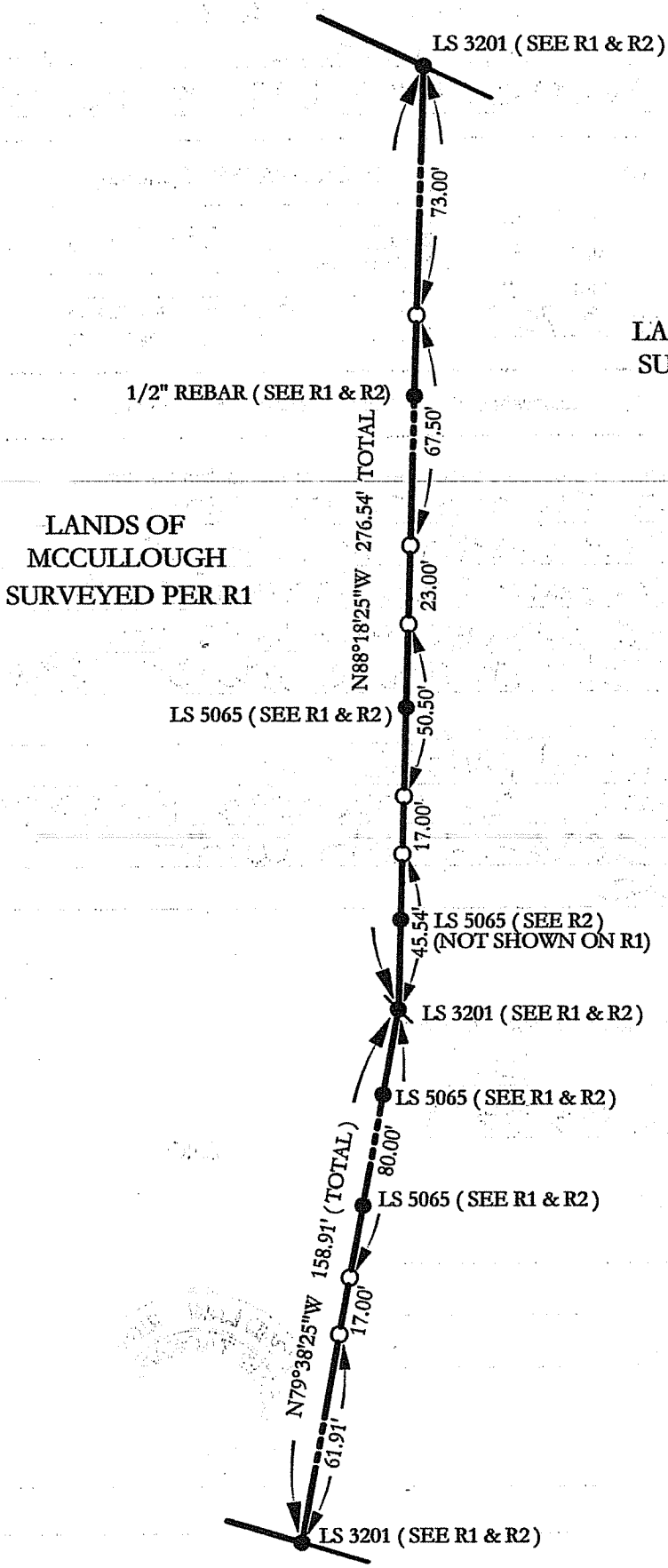


County Surveyor's Comment _____

BY: SURVEYING
D.J. SCRANTON
KREFFLE



SCALE : 1" = 50'



LANDS OF THOMAS
SURVEYED PER R2

LANDS OF
MCCULLOUGH
SURVEYED PER R1

LEGEND

- EXISTING MONUMENTATION AS NOTED (SEE NOTE 2)
- SET 1/2" REBAR WITH PLS CAP 5379 ON NORTHERLY LINE OF McCULLOUGH PER R1

REFERENCES

- R1 2009 MAPS 80 (BY THIS OFFICE)
- R2 33 OS 6

NOTES

1. THE DISTANCES SHOWN BETWEEN POINTS REPRESENT EITHER THE DISTANCE FROM THE CORNER POINT OR ANGLE POINT OF THE NORTHERLY LINE OF THE LANDS OF McCULLOUGH PER R1 TO A SET POINT OR THE DISTANCE BETWEEN THE SET LINE POINTS OF THIS CORNER RECORD.
2. EXISTING MONUMENTATION SHOWN IS DEPICTED GRAPHICALLY ONLY. REFER TO R1 OR R2 FOR PRECISE LOCATIONS.

BASIS OF BEARINGS

TAKEN AS SOUTH 61°46'51" WEST BETWEEN STANDARD STREET MONUMENTS ON SOUTH RIDGEWOOD ROAD. SEE R1.

ALL DISTANCES GIVEN IN FEET AND DECIMALS THEREOF