

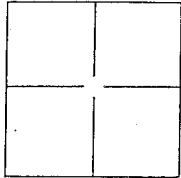
CORNER RECORD

Document Number A.P.N. 075-251-02

City of Kentfield

County of Marin, California

Brief Legal Description Lot 559 Map of Kent Woodlands Sub'd. No Sixteen 12 RM 51, and
Document Number 2012-0079301



CORNER TYPE

Government Corner Control
Meander Property
Rancho Other

COORDINATES(Optional)

N. _____
E. _____
Zone _____ NAD27 NAD83
NAD83 Epoch _____
Elev. _____
Vert. Datum: NGVD29 NADV88
Meas. Units: Metric Imperial

Date of Survey 30 October 2013

Corner - Left as found Found and tagged Established Reestablished Rebuilt

Identification and type of corner found: Evidence used to identify or procedure used to establish or reestablish the corner:
Found standard street monuments pin in concrete

A description of the physical condition of the monument as found and as set or reset: _____

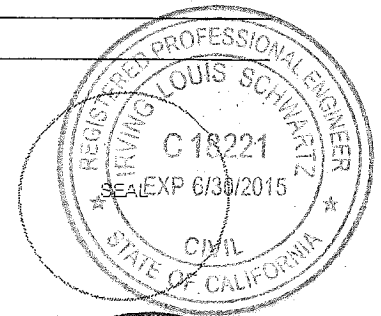
Set NE, and SW corners (2 corners) on Lot 559, 12 RM 51, See Exhibit "A".

SURVEYORS STATEMENT

This Corner Record was prepared by me or under my direction in conformance with

the Land Surveyors Act on DEC. 20, 2013

Signed [Signature] P.L.S. or R.C.E. No.: 18221



COUNTY SURVEYOR'S STATEMENT

This Corner Record was received NOVEMBER 5, 2013 and examined

and filed DECEMBER 26, 2013

Signed [Signature] P.L.S. or R.C.E. No.: 7821

Title DEPUTY COUNTY SURVEYOR

County Surveyor's Comment _____





ILS ASSOCIATES, INC.®
 Civil Engineering & Land Surveying
 79 Galli Drive, Suite A
 Novato, Ca 94949-5717
 (415)883-9200 FAX (415)883-2763

DRAWN: SW	JOB NO: 8819
DATE: 12/20/2013	SHEET NO. 2 OF 2

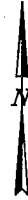
LEGEND

- SET 3/4" IRON PIPE W/
YELLOW CAP & TACK "R.C.E. 18221"
- FOUND 3/4" IRON PIPE W/
NAIL & BRASS TAG "RCE 10057"
- ⊙ FOUND STANDARD STREET
MONUMENT, PIN IN CONCRETE
- (R) RADIAL BEARING

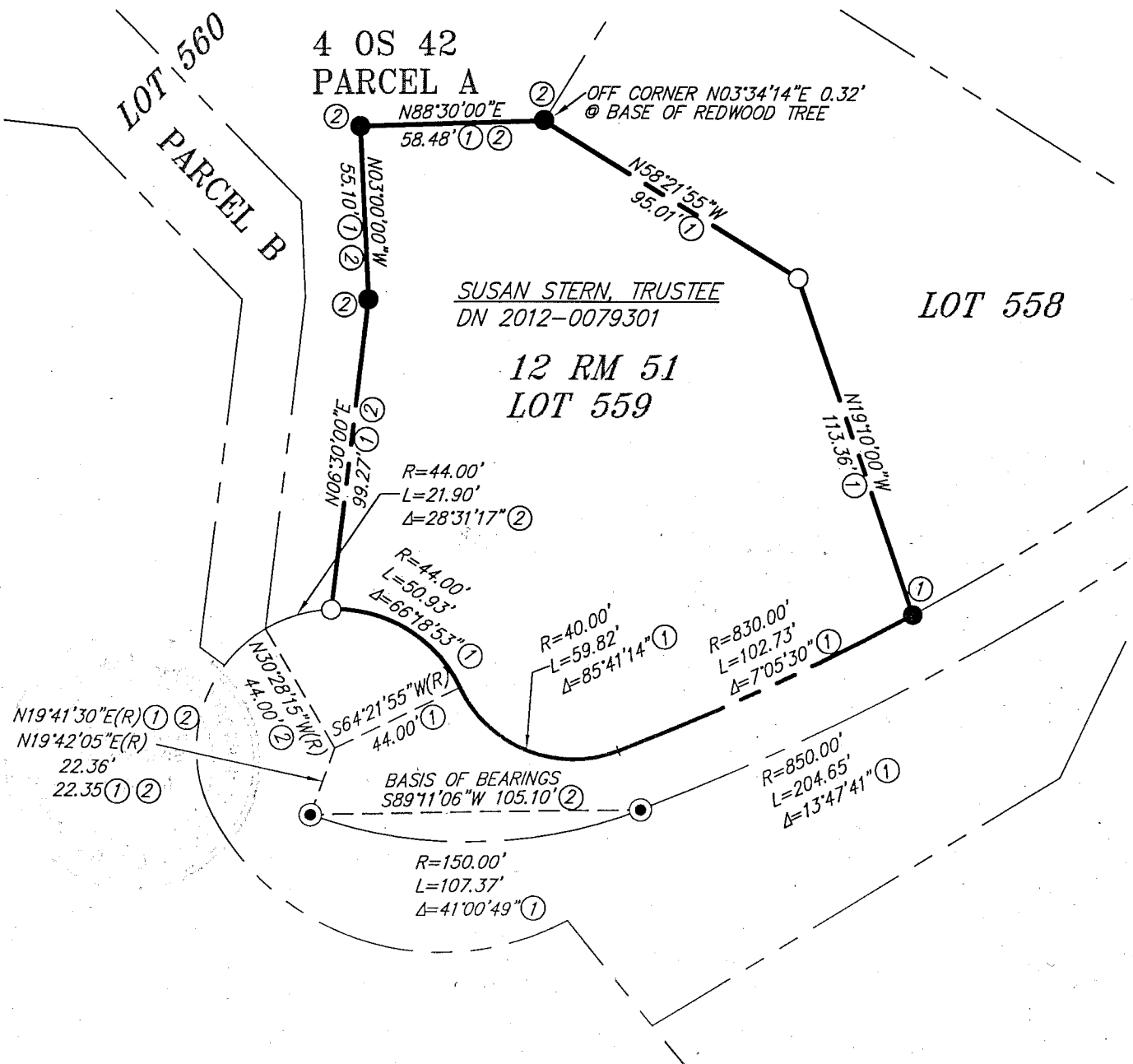
EXHIBIT A

REFERENCES

- ① MAP OF KENT WOODLANDS
SUB. NO. 16-12 RM 51
- ② RECORD OF SURVEY 4 OS 42



SCALE: 1" = 50'



N:\P850018819\dwg\8819CR.dwg, P8.5x11-50SC, 12/20/2013 7:31:58 AM, Letter (8.5" x 11"), ILS Associates, Inc. -, TH