

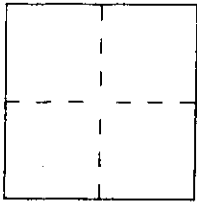
CORNER RECORD

Document Number APN 75-231-01

City of KENT WOODLANDS

County of MARIW, California

Brief Legal Description LOT 471 10 RM 79



CORNER TYPE

Government Corner Control
 Meander Property
 Rancho Other
 Date of Survey 12-13-99

COORDINATES (Optional)

N. _____
 E. _____
 Zone _____ Datum _____
 Elev. _____

Corner — Left as found Found and tagged Established Reestablished Rebuilt

Identification and type of corner found: Evidence used to identify or procedure used to establish or reestablish the corner:

FOUND CENTERLINE STANDARD STREET MONUMENT AS SHOWN ON
10 RM 79, AND ON REVERSE.

A description of the physical condition of the monument as found and as set or reset:

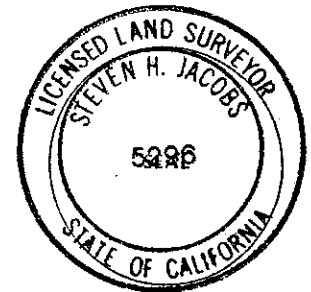
SET 3/4" I.P. # TAG PLS 5296, SET NAIL # TAG PLS 5296.

AP # 075-231-01

SURVEYOR'S STATEMENT

This Corner Record was prepared by me or under my direction in conformance with the Land Surveyors Act on DECEMBER 15 19 99.

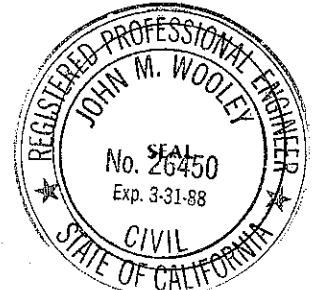
Signed [Signature] L.S. or R.C.E. Number PLS 5296



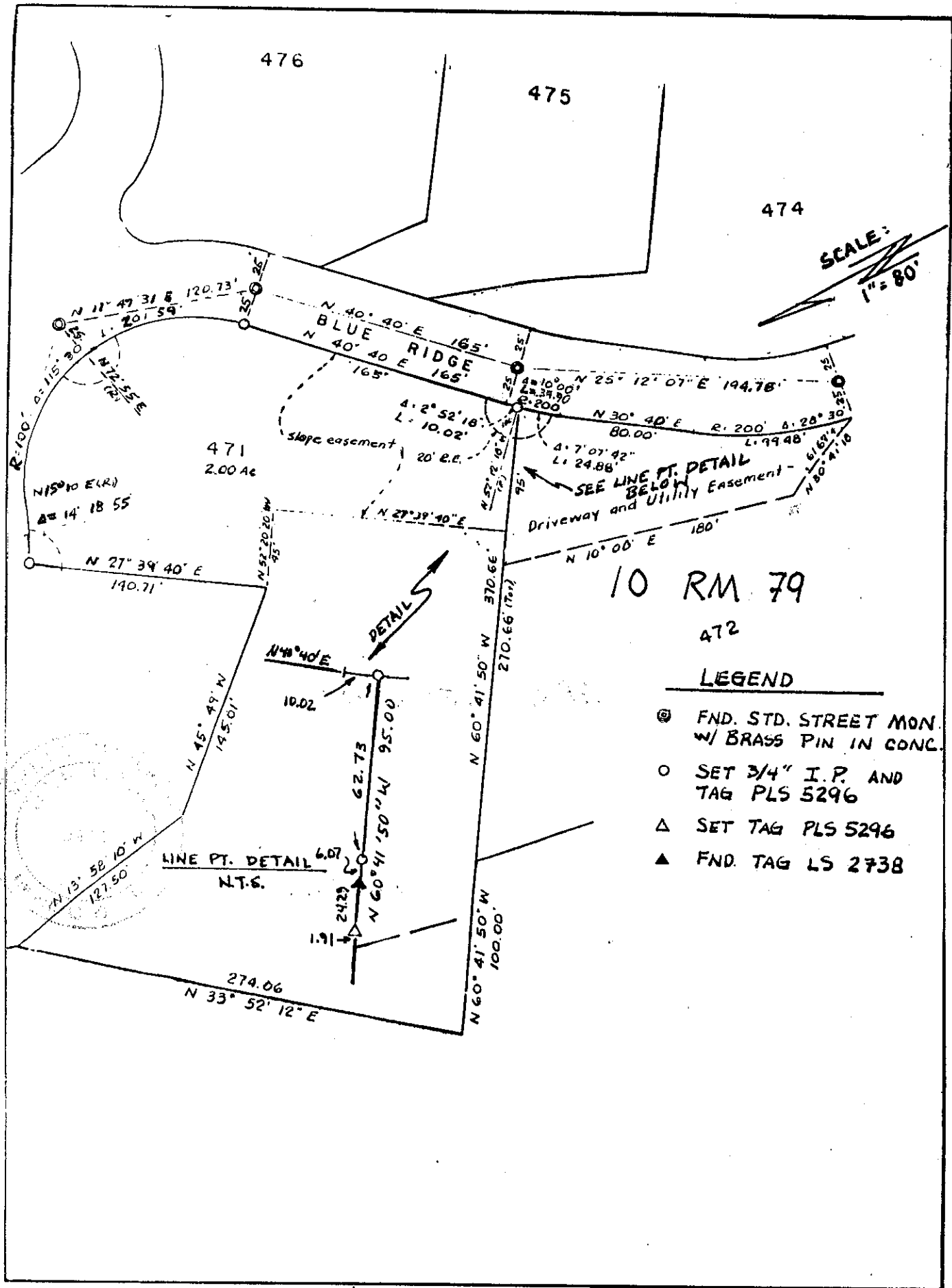
COUNTY SURVEYOR'S STATEMENT

This Corner Record was received 1-27-2000 and examined and filed 1-31-2000.

Signed _____ Title DEPUTY



County Surveyor's Comment _____



476

475

474

SCALE:
1" = 80'

BLUE RIDGE

10 RM 79

471
2.00 Ac

472

LEGEND

- ⊙ FND. STD. STREET MON. w/ BRASS PIN IN CONC.
- SET 3/4" I.P. AND TAG PLS 5296
- △ SET TAG PLS 5296
- ▲ FND. TAG LS 2738

LINE PT. DETAIL
N.T.S.