

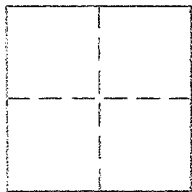
# CORNER RECORD

Agency Index DPW#19-133  
Document Number APN 075-214-07

City of KENTFIELD County of MARIN, California  
Brief Legal Description PARCELA 11 PM 90

### CORNER TYPE

### COORDINATES (Optional)



- Government Corner
- Meander
- Rancho
- Control
- Property
- Other

Date of Survey 4-25-19

N. \_\_\_\_\_ E. \_\_\_\_\_

Elevation \_\_\_\_\_

Units:  Metric  U.S. Survey Foot

Horizontal Datum: \_\_\_\_\_

Zone \_\_\_\_\_ Epoch Date \_\_\_\_\_

Vert. Datum: \_\_\_\_\_

Complies with Public Resources Code §§8801-8819

Complies with Public Resources Code §§8890-8902

PLS Act Ref.:  8765(d)  8771  8773  Other

Corner/Monument:  Left as found  Established  Rebuilt  Pre-Construction  
 Found and tagged  Reestablished  Referenced  Post-Construction

Narrative of Corner identified and monument as found, reset, replaced, or removed.

See sheet #2 for description(s):

RECOVERED STANDARD STREET MONUMENTS AS SHOWN ON 11 RM 90

SET REBAR & CAP PLS 5296 LINE POINTS AS SHOWN ON REVERSE.  
AS SHOWN ON REVERSE.

### SURVEYOR'S STATEMENT

This Corner record was prepared by me or under my direction in conformance with the Land Surveyor's Act of \_\_\_\_\_ MAY, 19, 2019 \_\_\_\_\_

Signed [Signature] P.L.S. or R.C.E. No. PLS 5296



### COUNTY SURVEYOR'S STATEMENT

This Corner Record was received NOVEMBER 12, 2019

and examined and filed DEC. 12, 2019

Signed [Signature] P.L.S. or R.C.E. No. 9292

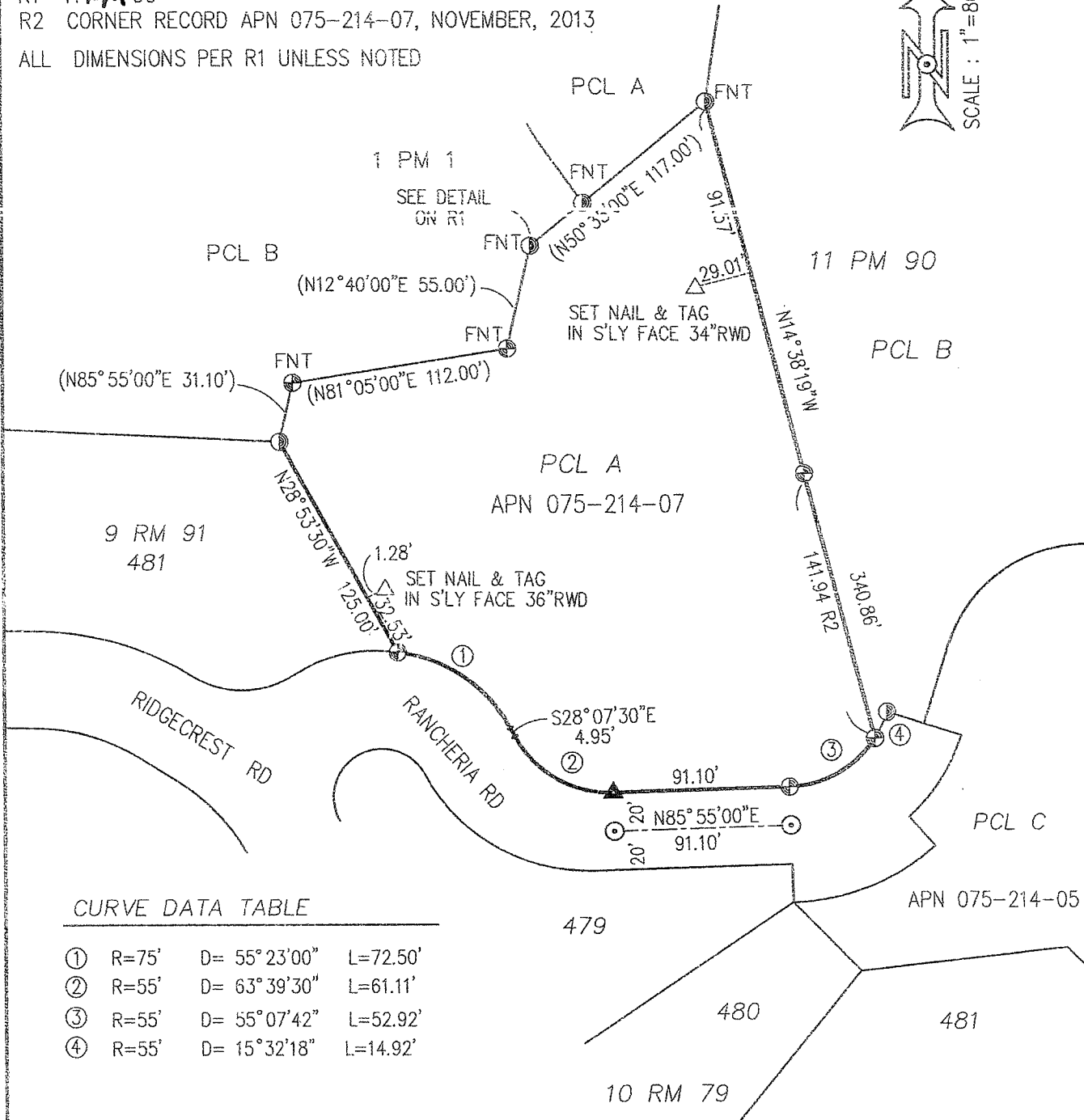
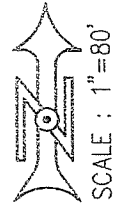
Title DEPUTY C.S.

County Surveyor's Comment



REFERENCES

R1 11 PM 90  
 R2 CORNER RECORD APN 075-214-07, NOVEMBER, 2013  
 ALL DIMENSIONS PER R1 UNLESS NOTED



CURVE DATA TABLE

①	R=75'	D= 55° 23'00"	L=72.50'
②	R=55'	D= 63° 39'30"	L=61.11'
③	R=55'	D= 55° 07'42"	L=52.92'
④	R=55'	D= 15° 32'18"	L=14.92'

LEGEND

- ⊙ FND. STD. ST. MON. AS SHOWN ON R1
- ⊕ FND. 3/4" IP & PLUG RCE 10759 PER R1
- ⊗ FND. 3/4" IP & PLUG LS 4694 PER R3
- ⊙ FND. 3/4" I.P TAGGED LS 6234 PER R2
- ▲ FND. TAG IN CONC. LS 4694 PER R2
- SET REBAR & CAP PLS 5296
- △ SET NAIL & TAG AS NOTED
- FNT FOUND, NOT TIED THIS SURVEY
- RWD REDWOOD TREE

PREPARED BY:

JACOBS LAND SURVEYING  
 P.O. BOX 7829  
 COTATI, CA. 94931  
 415 454-2235

JOB NO.18-1461-M FB#79  
 DWG FILE: 2019/APRIL/KLIMCHALKCR2