

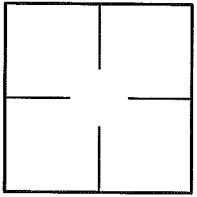
**CORNER RECORD**

Document Number APN 075-214-02 & 03

City of KENTFIELD

County of MARIN, California

Brief Legal Description LOT 480 & 481, 10 R.M. 79



**CORNER TYPE**                      **COORDINATES (Optional)**

Government Corner       Control   
Meander                       Property   
Rancho                       Other   
Date of Survey 03/23/16

N. \_\_\_\_\_  
E. \_\_\_\_\_  
Zone \_\_\_\_\_ NAD27       NAD83   
NAD83 Epoch \_\_\_\_\_  
Elev. \_\_\_\_\_  
Vert. Datum:      NGVD29       NAVD88   
Meas. Units:      Metric       Imperial

Corner-    Left as found     Found and tagged     Established     Reestablished     Rebuilt

Identification and type of corner found: Evidence used to identify or procedure used to establish or reestablish the corner:  
REESTABLISHED LOTS 480 & 481 AS SHOWN ON 10 R.M. 79 PER FOUND STREET MONUMENTS  
AS SHOWN ON SHEET 2

A description of the physical condition of the monument as found and as set or reset: SEE SHEET 2.

**SURVEYOR'S STATEMENT**

This Corner Record was prepared by me or under my direction in conformance with  
the Land Surveyor's Act on MARCH 23 2016  
Signed Lawrence P. Doyle      P.L.S. or R.C.E. No. P.L.S. 4694

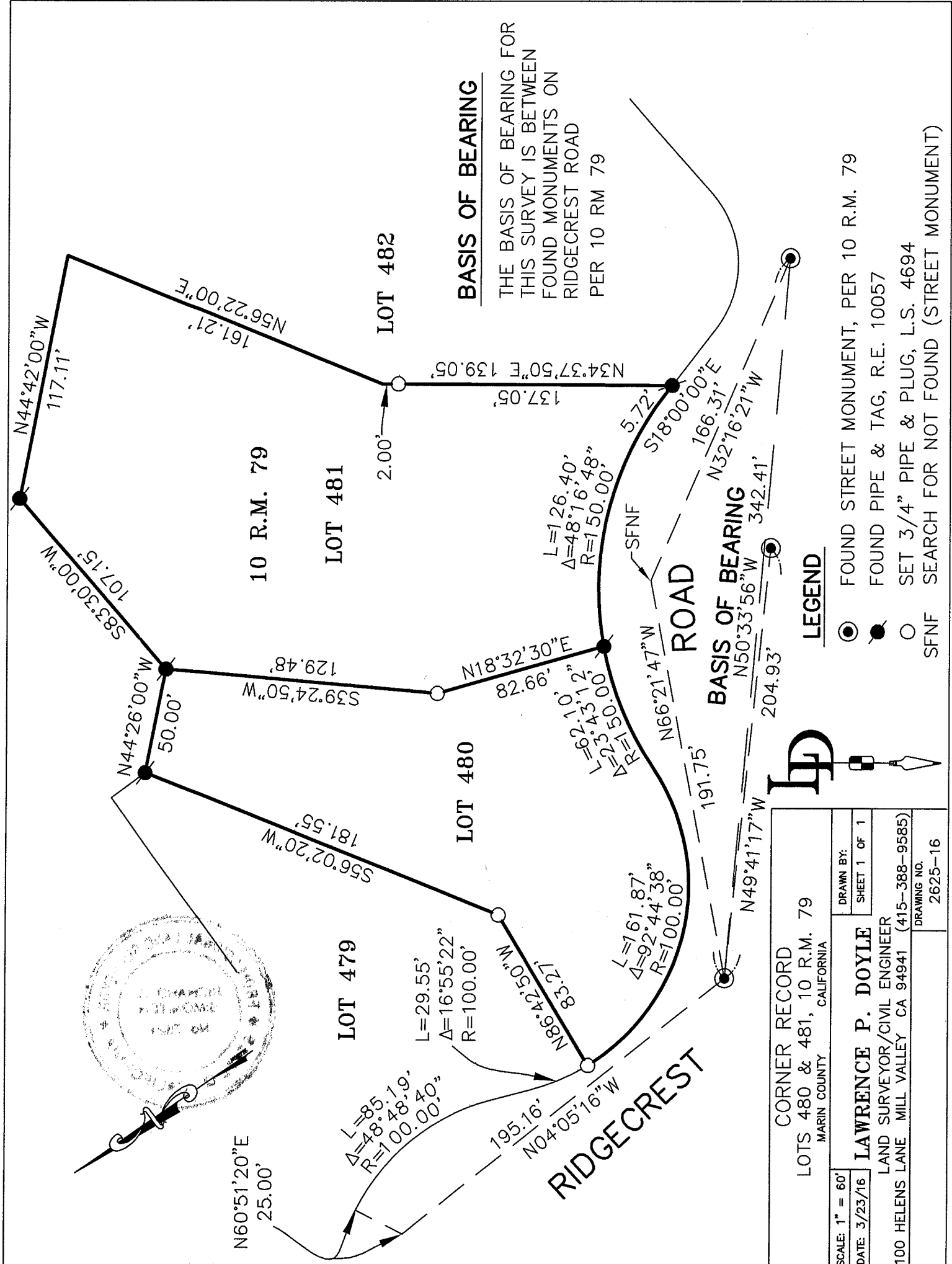


**COUNTY SURVEYOR'S STATEMENT**

This Corner Record was received MAY 4, 2016  
and examined and filed AUGUST 24, 2016  
Signed Richard G. Simonitch      P.L.S. or R.C.E. No. 7821  
Title County Surveyor



County Surveyor's Comment \_\_\_\_\_

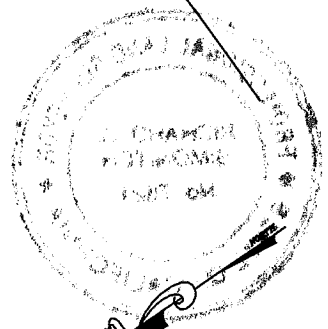
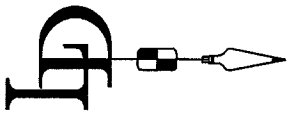


**BASIS OF BEARING**

THE BASIS OF BEARING FOR THIS SURVEY IS BETWEEN FOUND MONUMENTS ON RIDGECREST ROAD PER 10 RM 79

**LEGEND**

- FOUND STREET MONUMENT, PER 10 R.M. 79
- FOUND PIPE & TAG, R.E. 10057
- SET 3/4" PIPE & PLUG, L.S. 4694
- SFNF SEARCH FOR NOT FOUND (STREET MONUMENT)



<b>CORNER RECORD</b>	
LOTS 480 & 481, 10 R.M. 79	
MARIN COUNTY CALIFORNIA	
SCALE: 1" = 60'	DRAWN BY: SHEET 1 OF 1
DATE: 3/23/16	<b>LAWRENCE P. DOYLE</b>
LAND SURVEYOR/CIVIL ENGINEER	
100 HELENS LANE MILL VALLEY CA 94941 (415-388-9585)	
DRAWING NO. 2625-16	