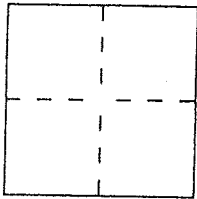


CORNER RECORD

City of Kentfield Document Number 075-201-01
County of Marin, California
Brief Legal Description Lot 45B of 9 RM 91



CORNER TYPE

Government Corner Control
Meander Property
Rancho Other
Date of Survey _____

COORDINATES
(Optional)

N. _____
E. _____
Zone _____ Datum _____
Elev. _____

Corner — Left as found Found and tagged Established Reestablished Rebuilt

Identification and type of corner found: Evidence used to identify or procedure used to establish or reestablish the corner:
Found Standard Street Monuments per 9 RM 91
as shown on Map (over)

A description of the physical condition of the monument as found and as set or reset: _____
set 1/2" rebar & cap LS 5290 as shown on Map

SURVEYOR'S STATEMENT

This Corner Record was prepared by me or under my direction in conformance with
the Land Surveyors' Act on 4/29/14

Signed David Harp L.S. or R.C.E. Number LS 5290

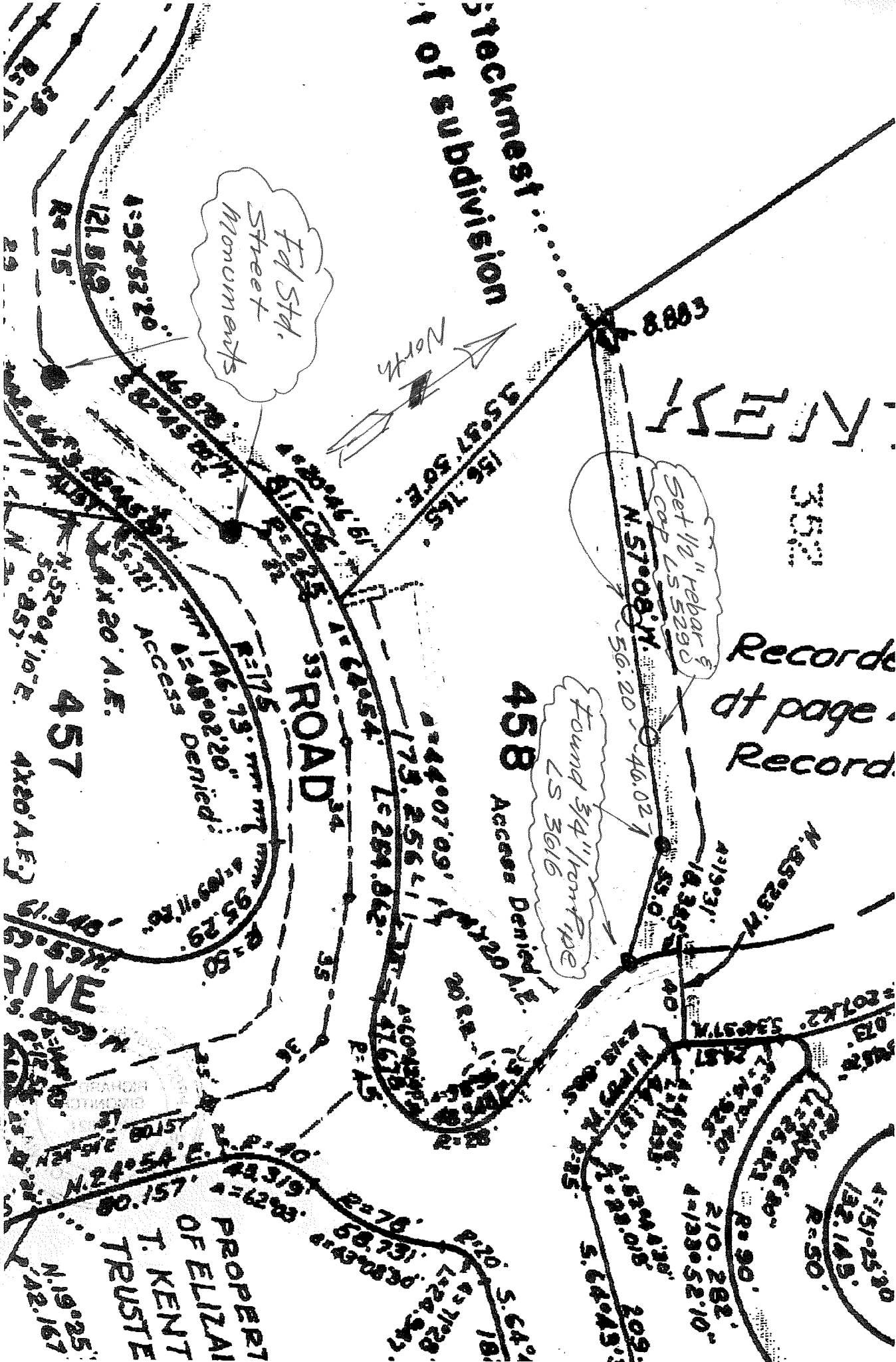
COUNTY SURVEYOR'S STATEMENT

This Corner Record was received MAY 19, 2014 and examined
and filed MAY 23, 2014

Signed Richard G. Simonitch Title DEPUTY

County Surveyor's Comment _____





Stockmest
of subdivision

KENT

3600

Records
at page
Record

458

Access Denied &

Found 3/4" Iron Pipe
LS 3616

Set 1/2" Rebar &
cap LS 5230

N. 57°08' W.
56.20' - 44.02''

ROAD

457

Access Denied

PROPERTY
OF ELIZABETH
T. KENT
TRUSTEE

Fed Std.
Street
Monuments

9 RM 91
(not to scale)

4-151-25.30
132.145'
R=50'

210.282'
4-1330-52.10'

5.64043'

5.64043'

5.64043'

5.64043'

5.64043'

5.64043'

5.64043'