

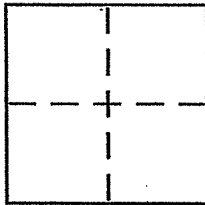
# CORNER RECORD

Document Number I.N. 2004-16429

Vicinity Kentfield

County of MARIN, California

Brief Legal Description Portion of Lot 452, Book 9 of Maps, Page 91, Marin County Records



### CORNER TYPE

Government Corner  Control   
 Meander  Property   
 Rancho  Other   
 Date of Survey \_\_\_\_\_

### COORDINATES (Optional)

N. \_\_\_\_\_  
 E. \_\_\_\_\_  
 Zone \_\_\_\_\_ NAD27  NAD83   
 NAD83 Epoch \_\_\_\_\_  
 Elev. \_\_\_\_\_  
 Vert. Datum: NGVD29  NAVD88   
 Meas. Units: Metric  Imperial

Corner -- Left as found  Found and tagged  Established  Reestablished  Rebuilt

Identification and type of corner found: Evidence used to identify or procedure used to establish or reestablish the corner:

Found Original Monuments with concrete cylinder with pin & Tag "RE 3230"  
per Book 9 of Maps, Page 91

A description of the physical condition of the monument as found and as set or reset: \_\_\_\_\_

Set 3/4" I.D. galvanized iron pipe with plastic plug "DANSKIN PLS 4794",  
as shown upon reverse side.

### SURVEYOR'S STATEMENT

This Corner Record was prepared by me or under my direction in conformance with  
 the Land Surveyor's Act on July 12, 2007

Signed [Signature] PLS or P.C.E. No. PLS 4794



### COUNTY SURVEYOR'S STATEMENT

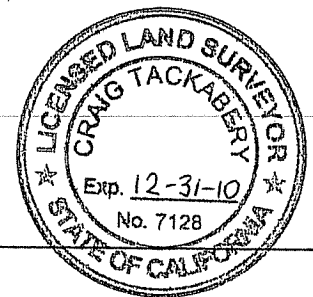
This Corner Record was received FEBRUARY 9, 2009

and examined and filed MARCH 3, 2009

Signed [Signature] PLS or P.C.E. No. 7128

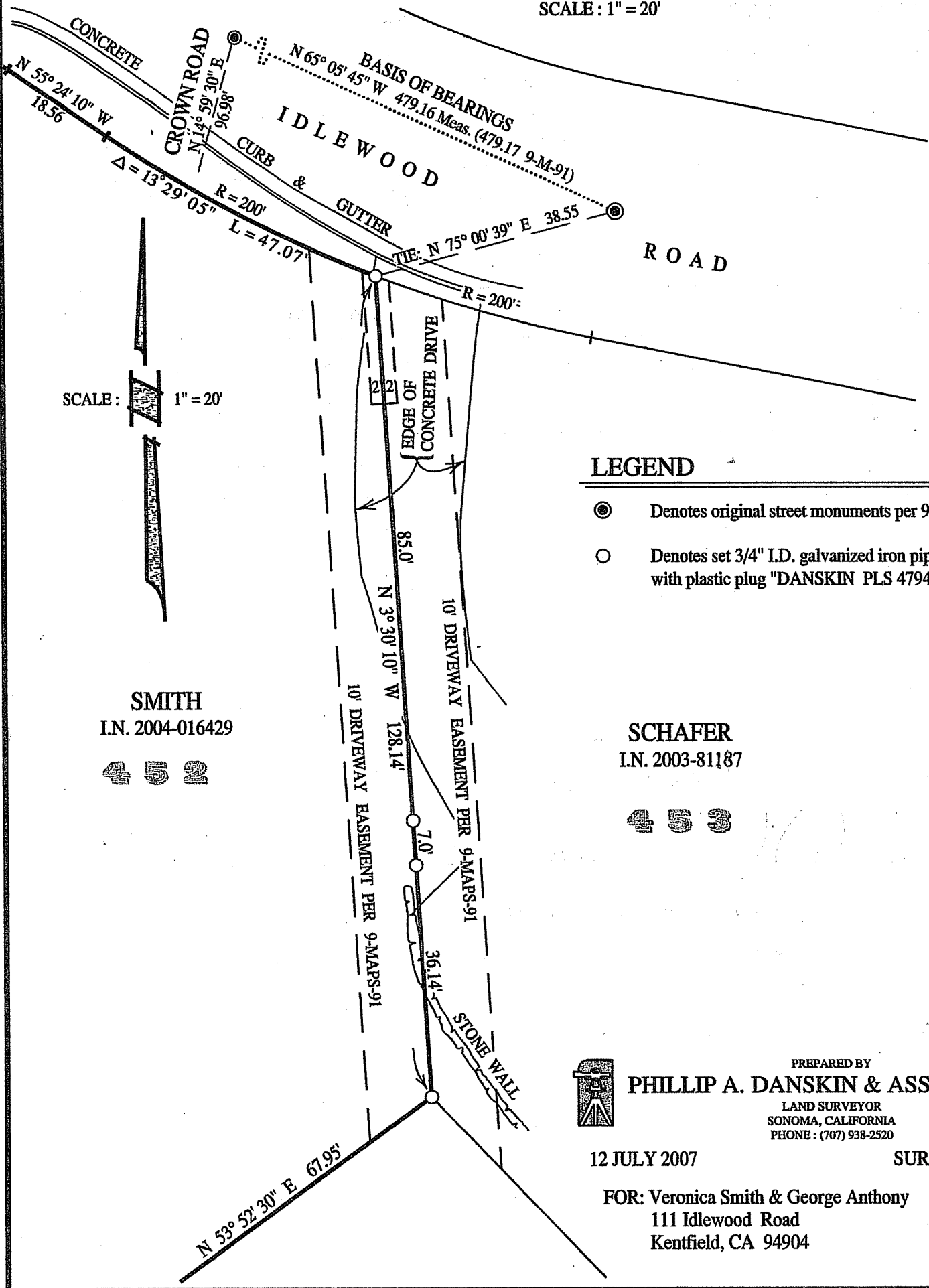
Title COUNTY SURVEYOR

County Surveyor's Comment \_\_\_\_\_





SCALE: 1" = 20'



SCALE: 1" = 20'

SMITH  
I.N. 2004-016429

4 5 2

**LEGEND**

- Denotes original street monuments per 9-MAPS-91
- Denotes set 3/4" I.D. galvanized iron pipe with plastic plug "DANSKIN PLS 4794"

SCHAFFER  
I.N. 2003-81187

4 5 2



PREPARED BY  
**PHILLIP A. DANSKIN & ASSOCIATES**

LAND SURVEYOR  
SONOMA, CALIFORNIA  
PHONE: (707) 938-2520

12 JULY 2007

SURVEY No. ( )

FOR: Veronica Smith & George Anthony  
111 Idlewood Road  
Kentfield, CA 94904