

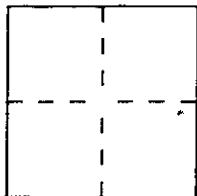
CORNER RECORD

Document Number _____

City of Kentfield

County of Marin, California

Brief Legal Description Lot 449 Map of Kent Woodlands (9 RM 91)



CORNER TYPE

Government Corner Control
Meander Property
Rancho Other
Date of Survey _____

COORDINATES
(Optional)

N. _____
E. _____
Zone _____ Datum _____
Elev. _____

Corner — Left as found Found and tagged Established Reestablished Rebuilt

Identification and type of corner found: Evidence used to identify or procedure used to establish or reestablish the corner:

Found conc. Monuments in Street as Per
Record Map 9 RM 91

A description of the physical condition of the monument as found and as set or reset: Set 1/2 Rebar
and Set 3/4" Iron Pipes with Caps RCE 30465;
See Page 2

SURVEYOR'S STATEMENT

This Corner Record was prepared by me or under my direction in conformance with the Land Surveyors' Act on JULY 12 19 96.

Signed Hallberg L.S. or R.C.E. Number RCE 30465



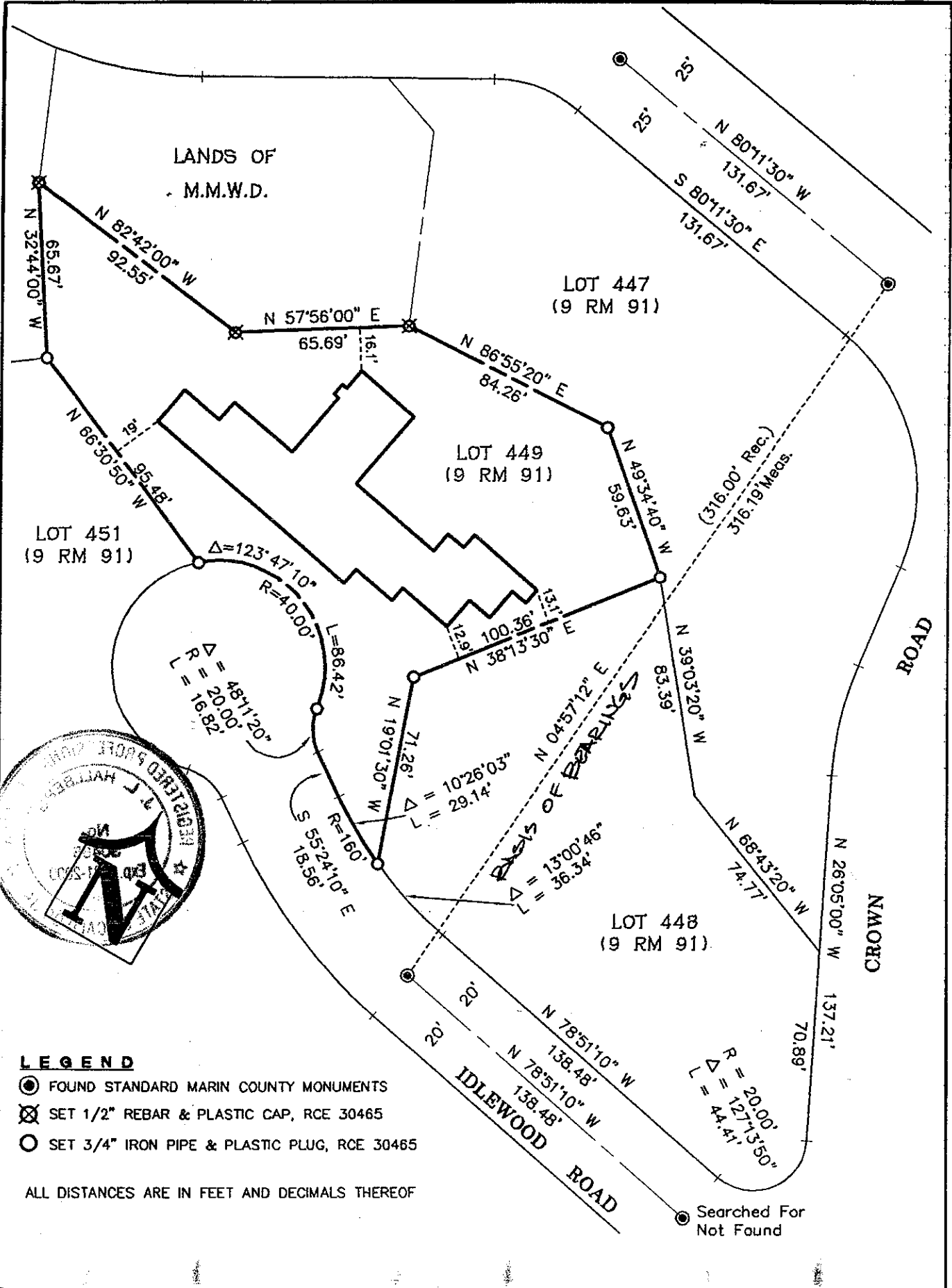
COUNTY SURVEYOR'S STATEMENT

This Corner Record was received JULY 24 19 96 and examined and filed 7-25 19 96.

Signed [Signature] Title DES



County Surveyor's Comment _____



LEGEND

- FOUND STANDARD MARIN COUNTY MONUMENTS
- ⊗ SET 1/2" REBAR & PLASTIC CAP, RCE 30465
- SET 3/4" IRON PIPE & PLASTIC PLUG, RCE 30465

ALL DISTANCES ARE IN FEET AND DECIMALS THEREOF

● Searched For
Not Found