

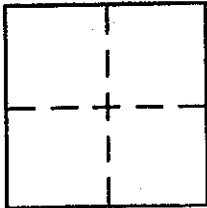
CORNER RECORD

Document Number APN. 075-192-04

City of KENTFIELD

County of MARIN, California

Brief Legal Description LOT 448, KENT WOODLANDS, SUBD. NO. 13 (9 RM91)



CORNER TYPE

- Government Corner Control
- Meander Property
- Rancho Other
- Date of Survey _____

COORDINATES (Optional)

- N. _____
- E. _____
- Zone _____ NAD27 NAD83
- NAD83 Epoch _____
- Elev. _____
- Vert. Datum: NGVD29 NAVD88
- Meas. Units: Metric Imperial

Corner -- Left as found Found and tagged Established Reestablished Rebuilt

Identification and type of corner found: Evidence used to identify or procedure used to establish or reestablish the corner:

FOUND STANDARD MARIN COUNTY MONUMENTS
AS PER RECORD MAP (9 RM91)

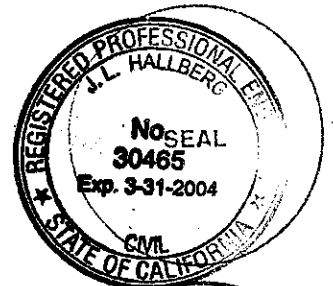
A description of the physical condition of the monument as found and as set or reset:

SET 3/4" IRON PIPE & PLASTIC PLUG, RCE 30465 AND
SET NAIL & TAG, RCE 30465; SEE PAGE 2

SURVEYOR'S STATEMENT

This Corner Record was prepared by me or under my direction in conformance with the Land Surveyor's Act on 5/29/03

Signed Jay P. Hallberg P.L.S. or R.C.E. No. 30465



COUNTY SURVEYOR'S STATEMENT

This Corner Record was received 5/30/03

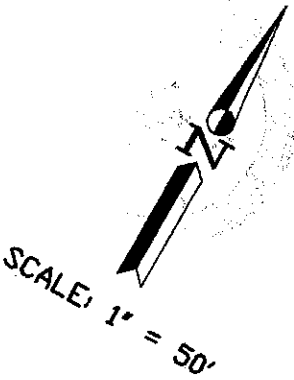
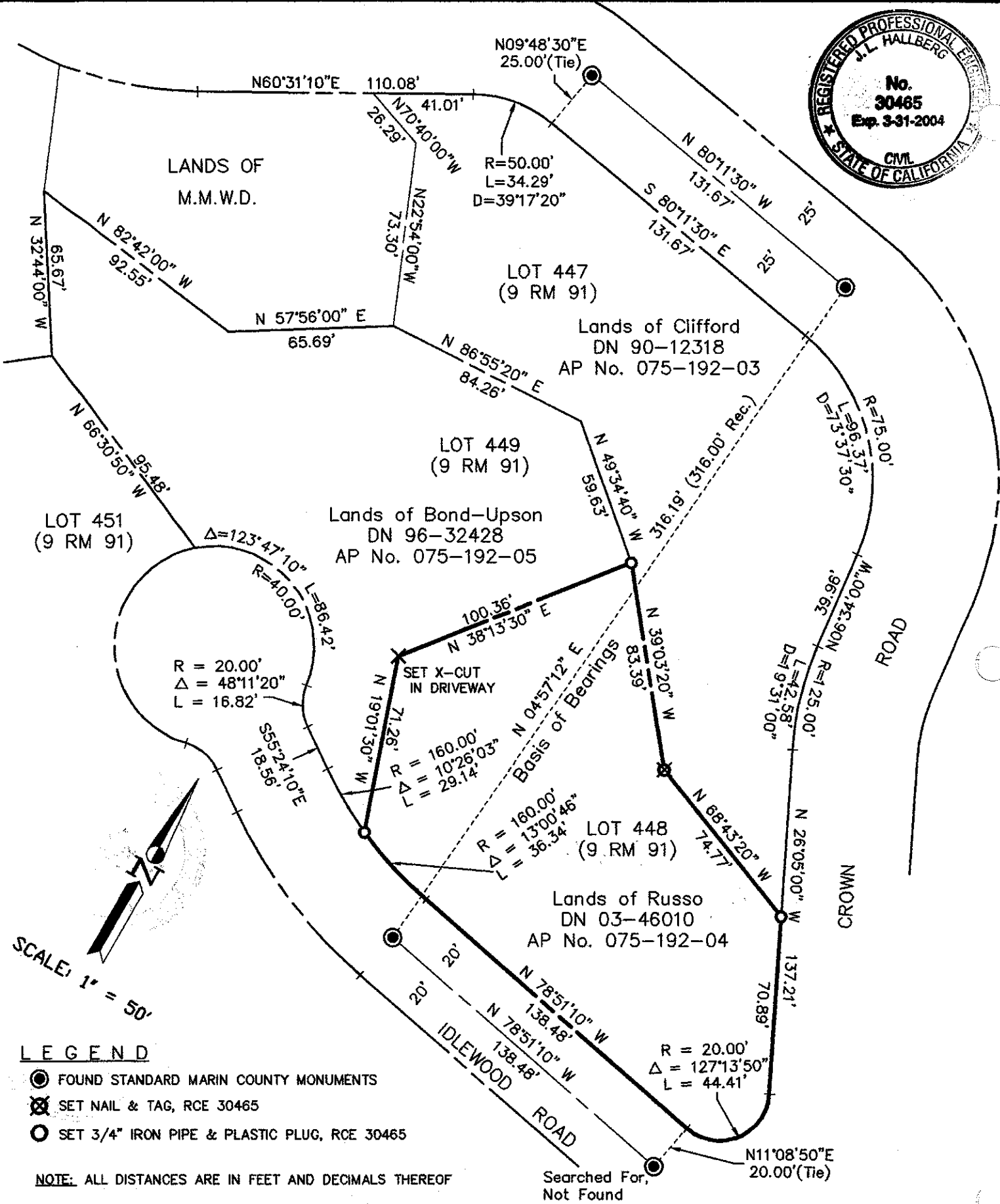
and examined and filed 6/2/03

Signed [Signature] P.L.S. or R.C.E. No. 7128

Title COUNTY SURVEYOR



County Surveyor's Comment _____



LEGEND

- FOUND STANDARD MARIN COUNTY MONUMENTS
- ⊗ SET NAIL & TAG, RCE 30465
- SET 3/4" IRON PIPE & PLASTIC PLUG, RCE 30465

NOTE: ALL DISTANCES ARE IN FEET AND DECIMALS THEREOF

SHEET	1	OF	1
SCALE:	1"=50'	DESIGN:	MDH
DATE:	4/25/03	DRAWN:	MDH
FILE:	03-059	CHECKED:	J.L.H.

J.L. ENGINEERING
CIVIL ENGINEERS—LAND SURVEYORS
 1530 4th ST., SAN RAFAEL, CA. 94901 (415) 457-8647

CORNER RECORD
 100 Idlewood Road, Kentfield, CA
 AP No. 075-192-04