

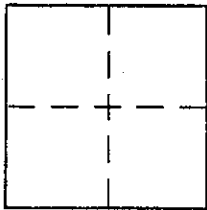
CORNER RECORD

Document Number APN 75-173-07

City of KENTFIELD

County of MARIN, California

Brief Legal Description LOT 499 ~ 12 RM 16



CORNER TYPE

Government Corner  Control   
Meander  Property   
Rancho  Other   
Date of Survey \_\_\_\_\_

COORDINATES (Optional)

N. \_\_\_\_\_  
E. \_\_\_\_\_  
Zone \_\_\_\_\_ NAD27  NAD83   
NAD83 Epoch \_\_\_\_\_  
Elev. \_\_\_\_\_  
Vert. Datum: NGVD29  NAVD88   
Meas. Units: Metric  Imperial

Corner - Left as found  Found and tagged  Established  Reestablished  Rebuilt

Identification and type of corner found: Evidence used to identify or procedure used to establish or reestablish the corner:

FND. STD. ST. MONUMENTS AND 3/4" I.P.'S TAGGED LS 3614  
AS SHOWN ON 12 RM 16 ON ON REVERSE.

APN 075-173-07

A description of the physical condition of the monument as found and as set or reset:

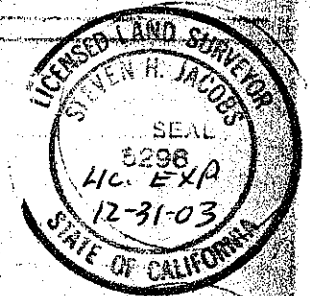
SET 3/4" I.P. AND NAIL AND TAG PLS 5296 AS  
SHOWN ON REVERSE.

SURVEYOR'S STATEMENT

This Corner Record was prepared by me or under my direction in conformance with

the Land Surveyor's Act on OCTOBER 7, 2002

Signed [Signature] P.L.S or R.C.E. No. P.L.S. 5296



COUNTY SURVEYOR'S STATEMENT

This Corner Record was received OCTOBER 17, 2002

and examined and filed OCTOBER 29, 2002

Signed [Signature] P.L.S or R.C.E. No. 7128

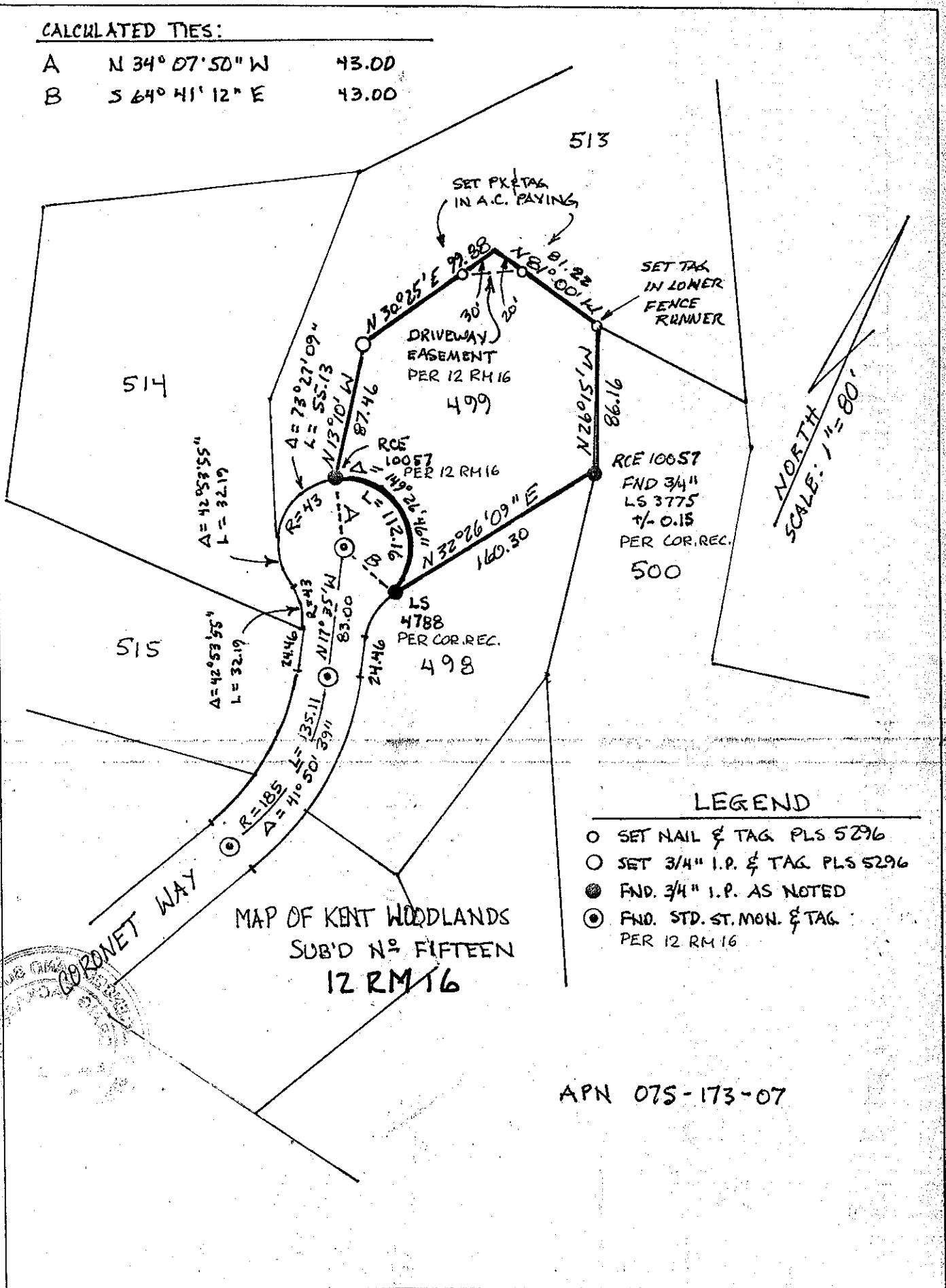
Title DEPUTY



County Surveyor's Comment \_\_\_\_\_

CALCULATED TIES:

A	N 34° 07' 50" W	43.00
B	S 64° 41' 12" E	43.00



LEGEND

- SET NAIL & TAG PLS 5296
- SET 3/4" I.P. & TAG PLS 5296
- FND. 3/4" I.P. AS NOTED
- ⊙ FND. STD. ST. MON. & TAG PER 12 RM 16

APN 075-173-07