

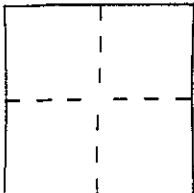
# CORNER RECORD

Document Number 075-171-03

City of KENTFIELD

County of MARIN, California

Brief Legal Description LOT 431 8 R.M.91



### CORNER TYPE

Government Corner  Control   
 Meander  Property   
 Rancho  Other   
 Date of Survey 7/26/00

### COORDINATES (Optional)

N. \_\_\_\_\_  
 E. \_\_\_\_\_  
 Zone \_\_\_\_\_ Datum \_\_\_\_\_  
 Elev. \_\_\_\_\_

Corner — Left as found  Found and tagged  Established  Reestablished  Rebuilt

Identification and type of corner found: Evidence used to identify or procedure used to establish or reestablish the corner:

- ① FOUND TAG ON FENCE L.S. 2738
- ② SET HUBS AND TAGS P.L.S. 4694 ON PROPERTY LINE ESTABLISH BY THE STREET MONUMENTS SHOWN 8 R.M.91

A description of the physical condition of the monument as found and as set or reset: \_\_\_\_\_

SEE SHEET 2

### SURVEYOR'S STATEMENT

This Corner Record was prepared by me or under my direction in conformance with the Land Surveyors' Act on 7/26 2000.

Signed Lawrence P. Doyle L.S. or R.C.E. Number P.L.S. 4694



### COUNTY SURVEYOR'S STATEMENT

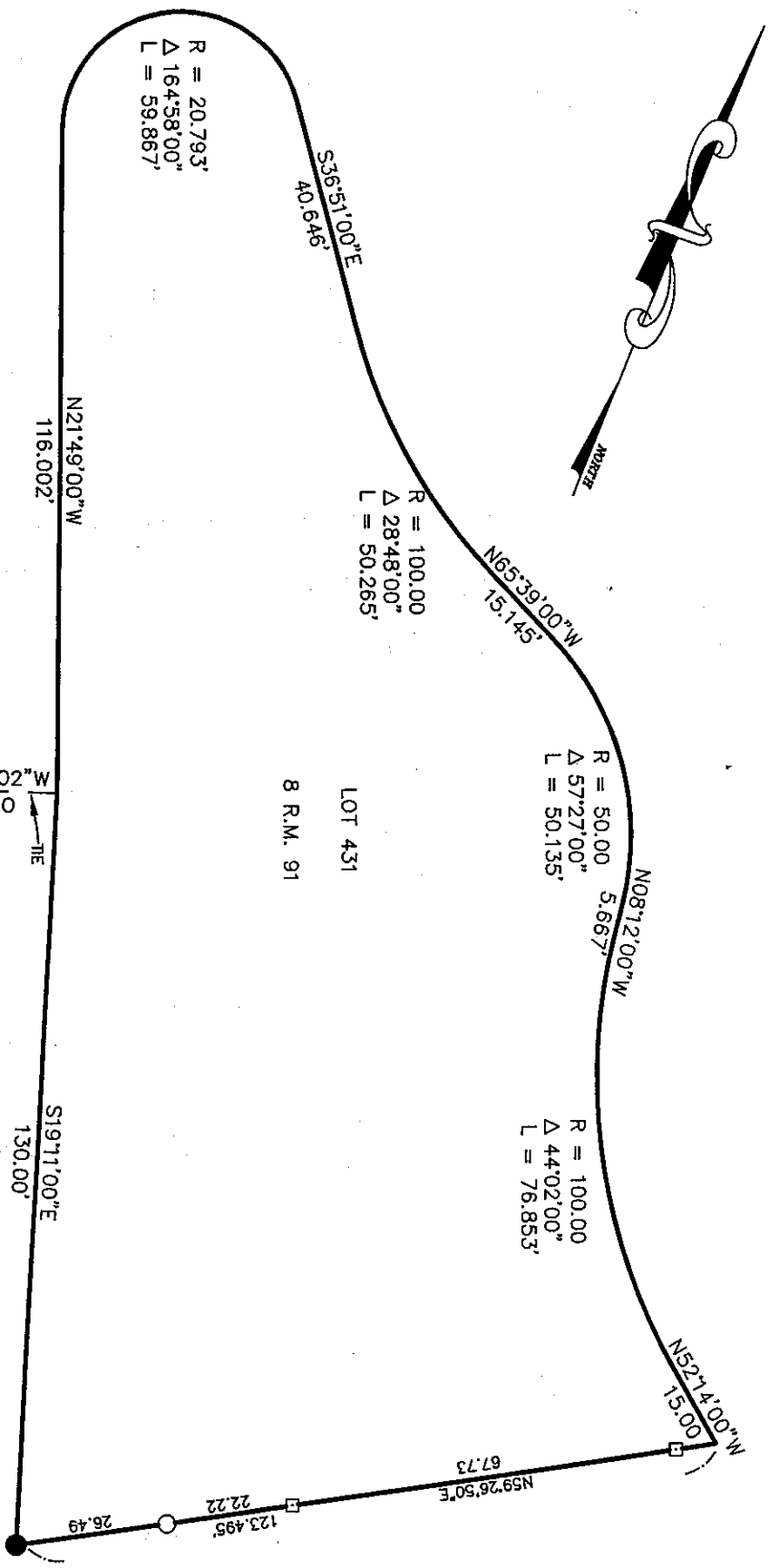
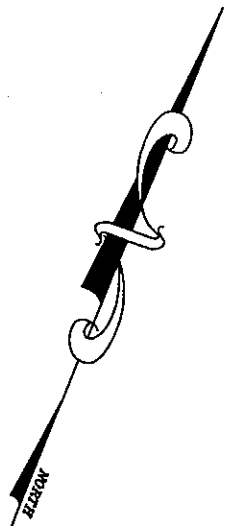
This Corner Record was received 8-7 2000 and examined

and filed 8-9, 2000.

Signed John M. Woolley Title DEPUTY



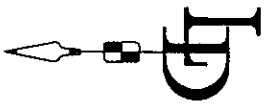
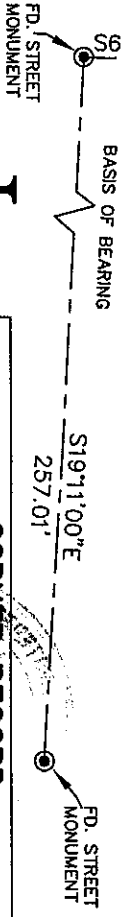
County Surveyor's Comment \_\_\_\_\_



PHOENIX RD.

LOT 431  
8 R.M. 91

- LEGEND**
- SET HUB AND TAG L.S. 4694
  - SET TAG IN FENCE L.S. 4694
  - FOUND TAG L.S. 2738 ON FENCE



<b>CORNER RECORD</b>	
<b>LOT 431</b>	
<b>8 R.M. 91</b>	
KENTFIELD CALIFORNIA	
MILL VALLEY	
<b>LAWRENCE P. DOYLE</b>	
LAND SURVEYOR/CIVIL ENGINEER	
P.O. BOX 1609 CA. 94942 (415-388-9585)	
SCALE: 1" = 30'	DRAWN BY:
DATE: 7/26/00	SHEET 2 OF 2
DRAWING NO. 443C-97	