

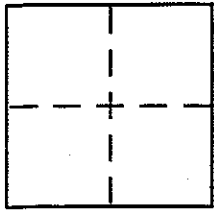
**CORNER RECORD**

Document Number 75-131-54

City of VICINITY OF KENTFIELD

County of MARIN, California

Brief Legal Description PARCEL 2 IDENTIFIED UPON 14 PM 51, M.C.R.



**CORNER TYPE**

Government Corner  Control   
Meander  Property   
Rancho  Other   
Date of Survey MARCH 20, 2001

**COORDINATES (Optional)**

N. \_\_\_\_\_  
E. \_\_\_\_\_  
Zone \_\_\_\_\_ NAD27  NAD83   
NAD83 Epoch \_\_\_\_\_  
Elev. \_\_\_\_\_  
Vert. Datum: NGVD29  NAVD88   
Meas. Units: Metric  Imperial

Corner - Left as found  Found and tagged  Established  Reestablished  Rebuilt

Identification and type of corner found: Evidence used to identify or procedure used to establish or reestablish the corner:  
REESTABLISH THE EXTERIOR BOUNDARY TO PARCEL 2 OF 14 PM 51 FROM EXISTING FOUND POINTS OF SAID RECORD MAP. SEE SKETCH ON REVERSE SIDE FOR DETAILS.

A description of the physical condition of the monument as found and as set or reset:  
set 1/2" rebar with PLASTIC YELLOW CAP AFFIXED TO TOP & EMBOSSED PLS 5379, SCRANTON / PIPE DRIVEN FLUSH WITH SURROUNDING GRADE.

**SURVEYOR'S STATEMENT**

This Corner Record was prepared by me or under my direction in conformance with the Land Surveyor's Act on MARCH 20 2001

Signed [Signature] P.L.S or R.C.E. No. PLS 5379  
RENEWAL 6.30.2004



**COUNTY SURVEYOR'S STATEMENT**

This Corner Record was received MARCH 29, 2001

and examined and filed APRIL 2, 2001

Signed [Signature] P.L.S or R.C.E. No. 7128

Title DEPUTY

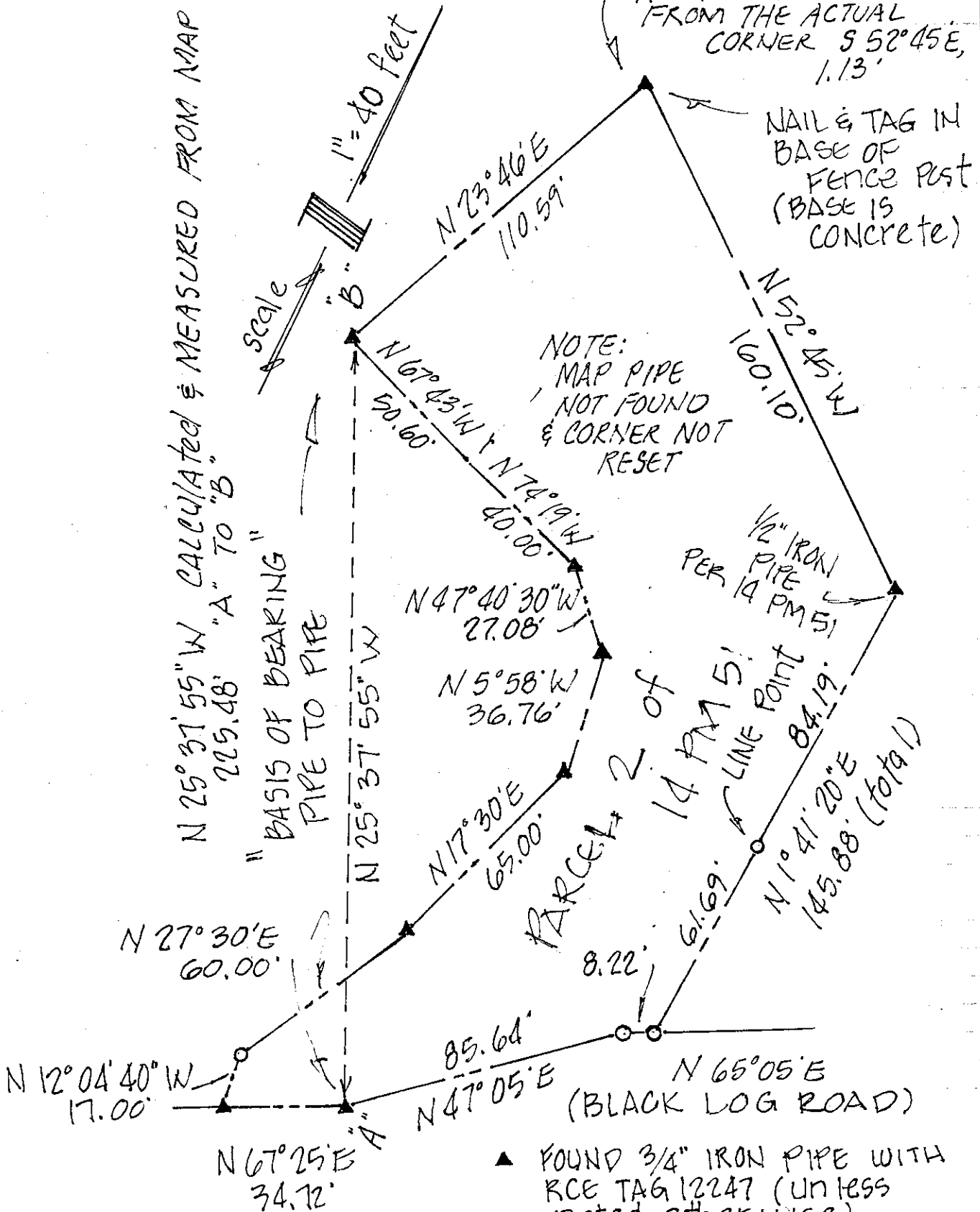
County Surveyor's Comment \_\_\_\_\_



BY 845 OLIVE NOVATO, CA 94954  
PREPARED BY DJ SCRANTON SURVEYING

ALL DISTANCES GIVEN IN FEET & DECIMALS THEREOF

AS NOTED ON 14 PM 51 THE EXISTING TAG RCE 11629 IS SITUATE FROM THE ACTUAL CORNER S 52° 45' E, 1.13'



EASEMENTS NOT DEPICTED

- ▲ FOUND 3/4" IRON PIPE WITH RCE TAG 12247 (UNLESS NOTED OTHERWISE)
- set 1/2" rebar/PLS 5379 CAP