

L. A. Stevens & Associates, Inc.
Professional Land Surveyors
Novato, California

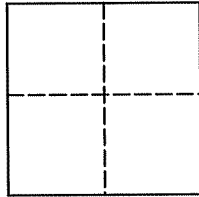
Lands of Zeitlin
Job #: 10-1271

CORNER RECORD

Document Number 075-131-24

Town of Kentfield, County of Marin, California

Brief Legal Description: Being Parcel One of that certain Parcel Map entitled "Lands of Robert Busse", filed February 19, 1974 in Book 9 of Parcel Maps at Page 74, Marin County Records.



CORNER TYPE

COORDINATES (Optional)

Government Corner Control

Meander Property

Rancho Other

Date of Survey May 7, 2010

N _____

E _____

Zone _____ NAD27 NAD83

NAD 83 Epoch _____

Elev. _____

Vert. Datum: NGVD29 NAVD88

Meas. Units: Metric Imperial

Corner - Left as found Found and tagged Established Reestablished Rebuilt

Identification and type of corner found: Evidence used to identify or procedure used to establish or reestablish the corner:
See Page 2 of 2

A description of the physical condition of the monument as found and as set or reset:
See Page 2 of 2

SURVEYOR'S STATEMENT

This Corner Record was prepared by me or under my direction in conformance with
The Land Surveyors Act on May 27, 2010

Signed [Signature] P.L.S. 6649



COUNTY SURVEYOR'S STATEMENT

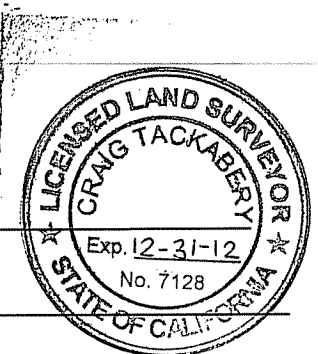
This Corner Record was received DECEMBER 28, 2010

and examined and filed JANUARY 26, 2011

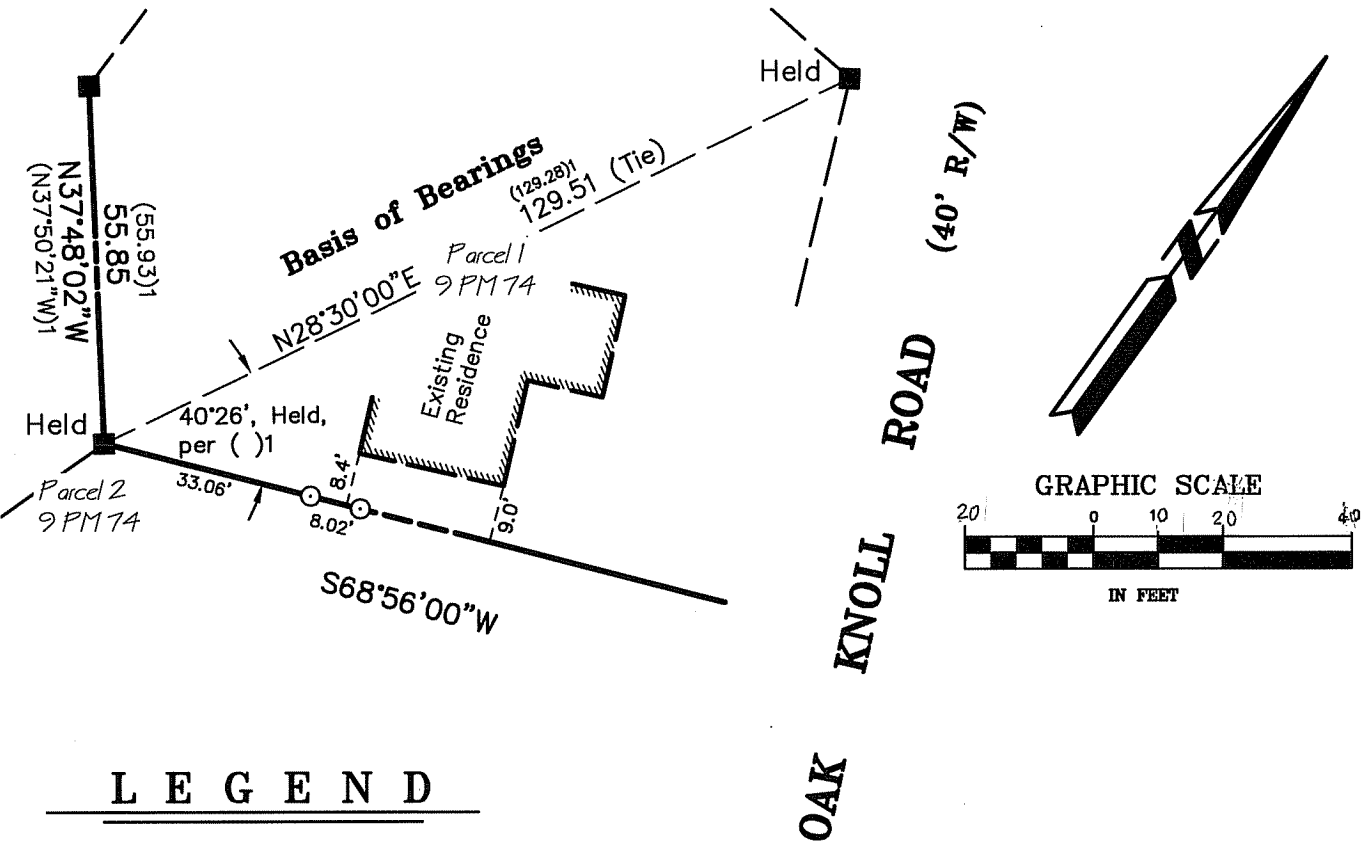
Signed [Signature] P.L.S. or R.G.E. No. 7128

Title COUNTY SURVEYOR

County Surveyors' Comment _____

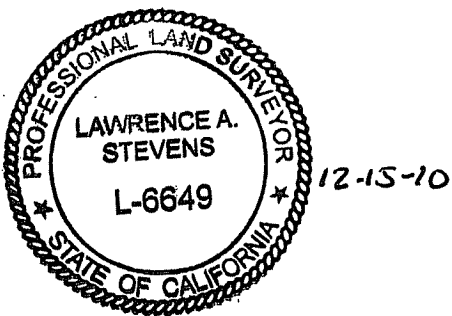


All distances shown are in feet and decimals thereof



LEGEND

- Found 2 x 2 Redwood Hub & Tag, "RCE 12247", per ()1
- Set 3/4" Iron Pipe & Plastic Plug, Stamped "LS 6649"
- ()1 9 PM 74



Corner Record Southeasterly Line Lands of Zeitlin

(Parcel 1, 9 PM 74)

Kentfield Marin County California
Scale: 1" = 30' May 2010

L.A. Stevens & Associates, Inc.

Professional Land Surveyors * (415) 382-7713
7 Commercial Blvd., Suite 1 * Novato, CA 94949

Lawrence A. Stevens, PLS 6649

Job # 10-1271

Page 2 Of 2