

CORNER RECORD

Document Number 075-121-21

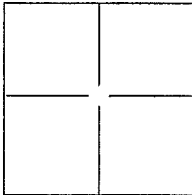
City of Kentfield

County of Marin, California

Brief Legal Description Control Monument – Rancheria Road, 7 RM 43

CORNER TYPE

COORDINATES (Optional)



Government Corner Control
 Meander Property
 Rancho Other

N. _____
 E. _____
 Zone _____ NAD27 NAD83
 NAD83 Epoch _____
 Elev. _____
 Vert. Datum: NGVD29 NADV88
 Meas. Units: Metric Imperial

Date of Survey _____

Corner - Left as found Found and tagged Established Reestablished Rebuilt

Identification and type of corner found: Evidence used to identify or procedure used to establish or reestablish the corner:

REFERENCED FOUND IRON PIPES ON RANCHERIA ROAD, AS SHOWN ON 7RM43, WITH SET MAG NAIL IN NEARBY DRIVEWAY, AND CUT X IN SEPARATE NEARBY DRIVEWAY (SEE ATTACHED SKETCH).

A description of the physical condition of the monument as found and as set or reset: MONUMENTS REESTABLISHED AFTER CONSTRUCTION WITH STANDARD MARIN COUNTY SURVEY MONUMENT, AS SHOWN ON UNIFORM STANDARDS OF COUNTY OF MARIN DRAWING No. 300. (SEE ATTACHED SKETCH)

SURVEYOR'S STATEMENT

This Corner Record was prepared by me or under my direction in conformance with the Land Surveyor's Act on JANUARY 08, 2016.

Signed T.W. Park (P.L.S. or R.C.E. No.: 8176)



COUNTY SURVEYOR'S STATEMENT

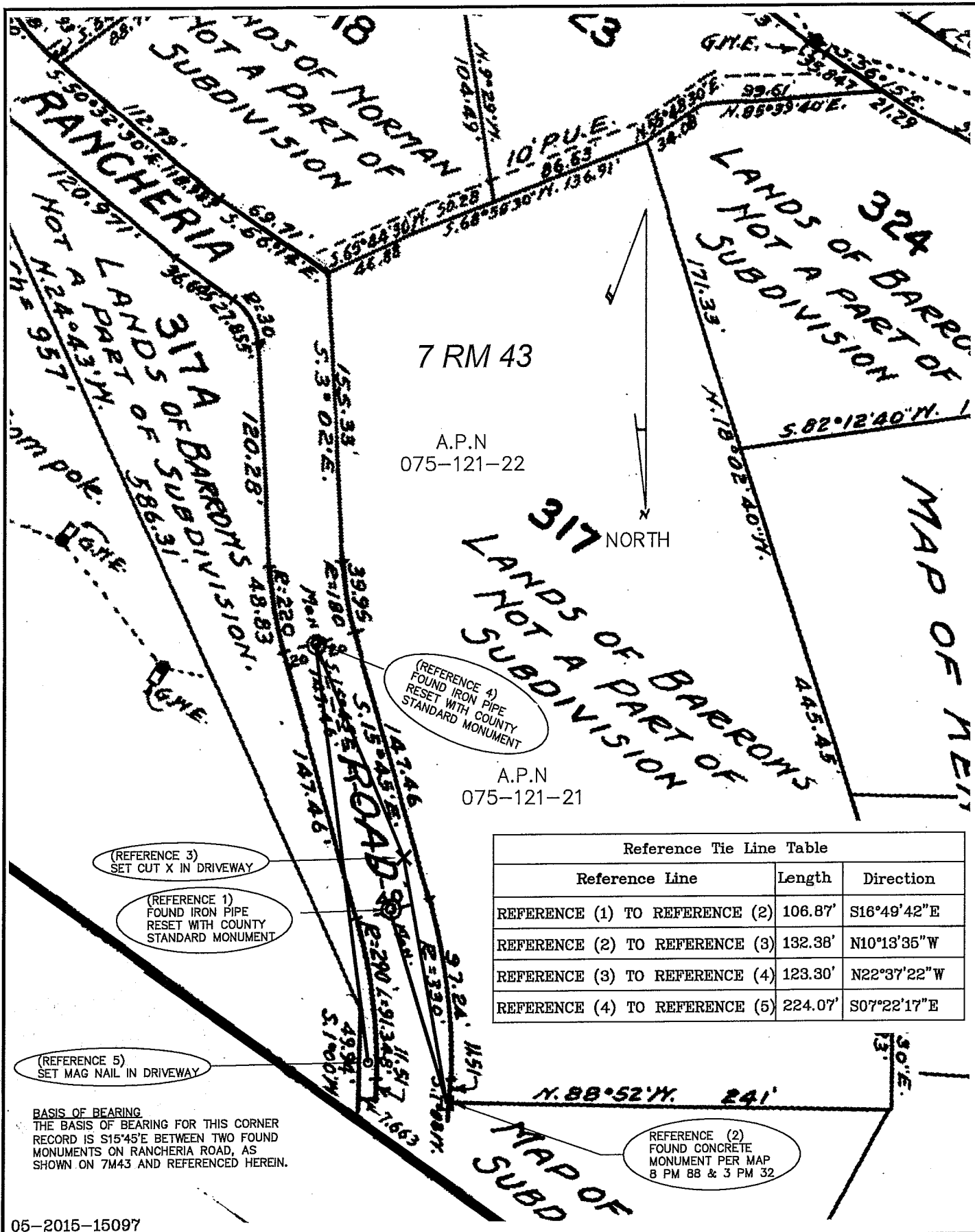
This Corner Record was received January 8, 2016 and examined and filed January 12, 2016.

Signed Richard G. Simonitch P.L.S. or R.C.E. No.: 7821

Title County Surveyor

County Surveyor's Comment _____





7 RM 43
A.P.N
075-121-22

317
LANDS OF BARRO'S
NOT A PART OF
SUBDIVISION

(REFERENCE 4)
FOUND IRON PIPE
RESET WITH COUNTY
STANDARD MONUMENT

A.P.N
075-121-21

Reference Tie Line Table		
Reference Line	Length	Direction
REFERENCE (1) TO REFERENCE (2)	106.87'	S16°49'42"E
REFERENCE (2) TO REFERENCE (3)	132.38'	N10°13'35"W
REFERENCE (3) TO REFERENCE (4)	123.30'	N22°37'22"W
REFERENCE (4) TO REFERENCE (5)	224.07'	S07°22'17"E

(REFERENCE 3)
SET CUT X IN DRIVEWAY

(REFERENCE 1)
FOUND IRON PIPE
RESET WITH COUNTY
STANDARD MONUMENT

(REFERENCE 5)
SET MAG NAIL IN DRIVEWAY

BASIS OF BEARING
THE BASIS OF BEARING FOR THIS CORNER
RECORD IS S15°45'E BETWEEN TWO FOUND
MONUMENTS ON RANCHERIA ROAD, AS
SHOWN ON 7M43 AND REFERENCED HEREIN.

(REFERENCE 2)
FOUND CONCRETE
MONUMENT PER MAP
8 PM 88 & 3 PM 32

05-2015-15097

COUNTY OF MARIN
DEPARTMENT OF PUBLIC WORKS
SURVEY SECTION

SCALE: 1" = 70'

CORNER RECORD