

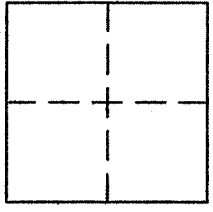
CORNER RECORD

City of KENTFIELD

Document Number APN 075-121-14

County of MARIN, California

Brief Legal Description LOT 321, 7 RM 43



CORNER TYPE

Government Corner  Control   
Meander  Property   
Rancho  Other   
Date of Survey 3-30-11

COORDINATES (Optional)

N. \_\_\_\_\_  
E. \_\_\_\_\_  
Zone \_\_\_\_\_ NAD27  NAD83   
NAD83 Epoch \_\_\_\_\_  
Elev. \_\_\_\_\_  
Vert. Datum: NGVD29  NAVD88   
Meas. Units: Metric  Imperial

Corner - Left as found  Found and tagged  Established  Reestablished  Rebuilt

Identification and type of corner found: Evidence used to identify or procedure used to establish or reestablish the corner:  
FOUND STREET MONUMENTS (2" I.P.'S) AS SHOWN ON 7 RM 43, AND ON REVERSE

A description of the physical condition of the monument as found and as set or reset:  
SET REBARS W/CAP, PLS 5296, AND PK & TAG, PLS 5296, AS SHOWN ON REVERSE

SURVEYOR'S STATEMENT

This Corner record was prepared by me or under my direction in conformance with  
the Land Surveyor's Act on APRIL 6, 2011

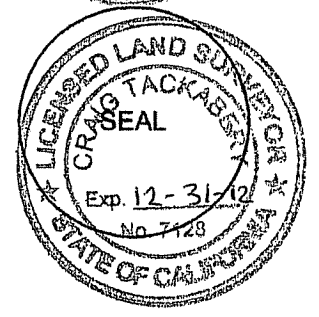
Signed [Signature] P.L.S. or R.C.E. No. PLS 5296



COUNTY SURVEYOR'S STATEMENT

This Corner Record was received MAY 13, 2011  
and examined and filed JUNE 22, 2011

Signed [Signature] P.L.S. or R.C.E. No. 7128  
Title COUNTY SURVEYOR



County Surveyor's Comment \_\_\_\_\_

REFERENCES

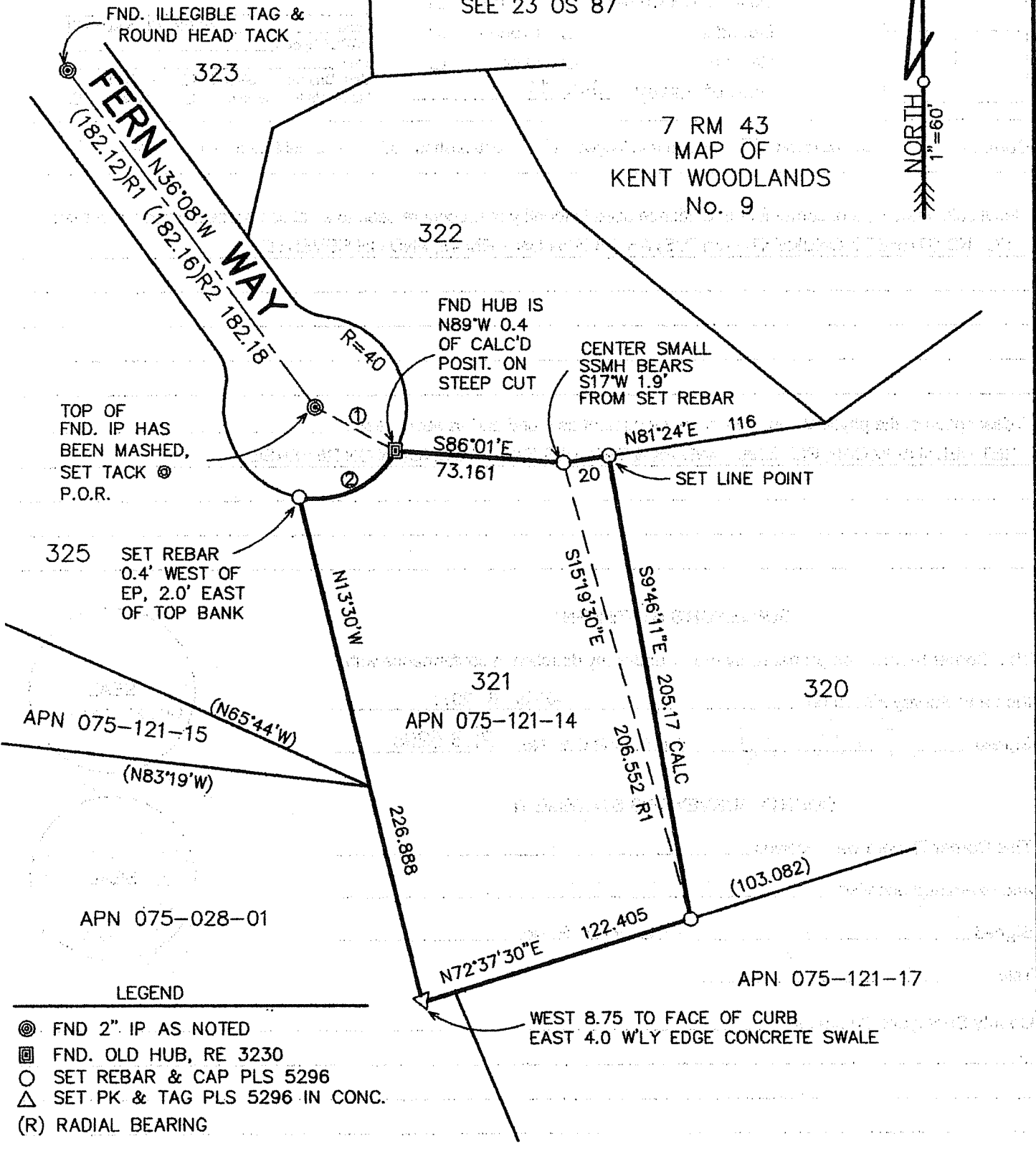
R1 7 RM 43  
 R2 23 OS 87  
 BEARINGS & DISTANCES PER  
 R1, UNLESS NOTED

COURSE & DISTANCE TABLE

- ① S61°23'50"E(R) 40.00
- ② D=71°36'30" L= 49.992

SEE 23 OS 87

7 RM 43  
 MAP OF  
 KENT WOODLANDS  
 No. 9



LEGEND

- ⊙ FND 2" IP AS NOTED
- ⊠ FND. OLD HUB, RE 3230
- SET REBAR & CAP PLS 5296
- △ SET PK & TAG PLS 5296 IN CONC.
- (R) RADIAL BEARING