

CORNER RECORD

Document Number A.P.# 075-101-07City of KENT WOODLANDSCounty of MARIN

, California

Brief Legal Description LOT 353 7 R.M. 43**CORNER TYPE**

Government Corner Control
Meander Property
Rancho Other
Date of Survey FEBRUARY 3, 2002

COORDINATES (Optional)

N. _____
E. _____
Zone _____ NAD27 NAD83
NAD83 Epoch _____
Elev _____
Vert. Datum: NGVD29 NAVD88
Meas. Units: Metric Imperial

Corner- Left as found Found and tagged Established Reestablished Rebuilt

Identification and type of corner found: Evidence used to identify or procedure used to establish or reestablish the corner:
ESTABLISHED CORNER AND PROPERTY LINE FROM FOUND STREET MONUMENTS SHOWN ON 7 R.M. 43

A description of the physical condition of the monument as found and as set or reset: SEE PAGE 2

SURVEYOR'S STATEMENT

This Corner Record was prepared by me or under my direction in conformance with

the Land Surveyor's Act on FEBRUARY 4 2002

Signed Lawrence P. Doyle P.L.S. or R.C.E. No. P.L.S. 4694

COUNTY SURVEYOR'S STATEMENT

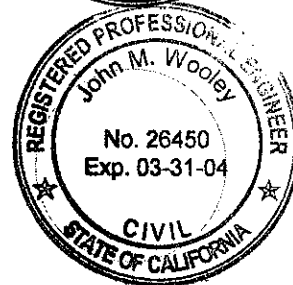
This Corner Record was received FEBRUARY 11, 2002

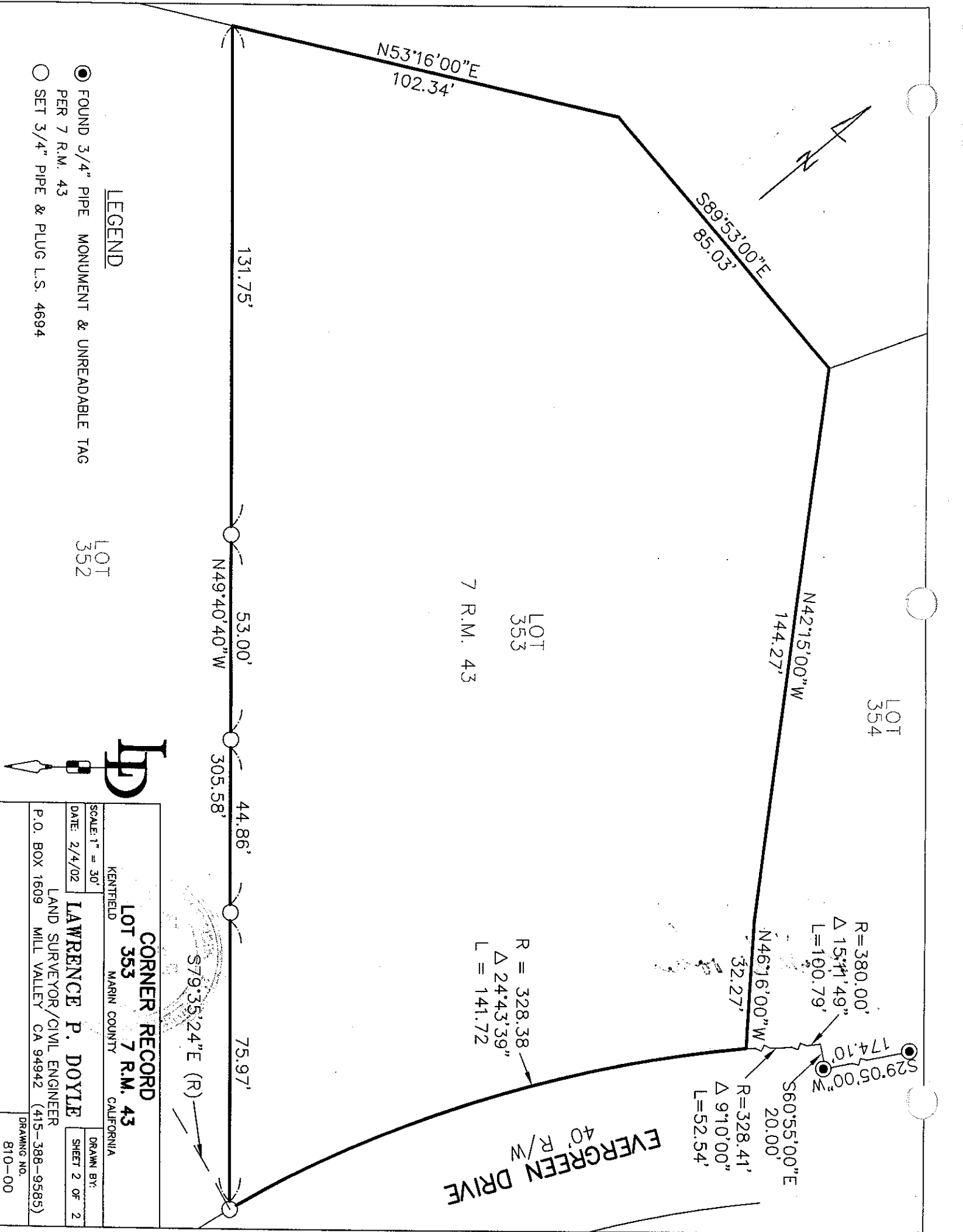
and examined and filed FEBRUARY 12, 2002

Signed John M. Wooley P.L.S. or R.C.E. No. 26450

Title DEPUTY

County Surveyor's Comment _____





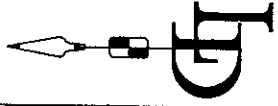
- FOUND 3/4" PIPE MONUMENT & UNREADABLE TAG PER 7 R.M. 43
- SET 3/4" PIPE & PLUG L.S. 4694

LEGEND

LOT 352

LOT 353
7 R.M. 43

LOT 354



CORNER RECORD	
LOT 353 7 R.M. 43	
KENTFIELD MARIN COUNTY CALIFORNIA	
LAWRENCE P. DOYLE	
LAND SURVEYOR/CIVIL ENGINEER	
P.O. BOX 1609 MILL VALLEY CA 94942 (415-388-9585)	
SCALE: 1" = 30'	DRAWN BY:
DATE: 2/4/02	SHEET 2 OF 2
DRAWING NO. 810-00	

R = 328.38
Δ 24°43'39"
L = 141.72

R = 380.00
Δ 15°11'49"
L = 100.79

R = 328.41'
Δ 9°10'00"
L = 52.54'

S79°35'24"E (R)

EVERGREEN DRIVE
40' R/W