

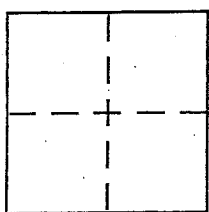
**CORNER RECORD**

Document Number 075-101-04

City of Kentfield

County of MARIN, California

Brief Legal Description Control Monuments - 2003 MAPS 302



**CORNER TYPE**

- Government Corner  Control
- Meander  Property
- Rancho  Other
- Date of Survey \_\_\_\_\_

**COORDINATES (Optional)**

- N. \_\_\_\_\_
- E. \_\_\_\_\_
- Zone \_\_\_\_\_ NAD27  NAD83
- NAD83 Epoch \_\_\_\_\_
- Elev. \_\_\_\_\_
- Vert. Datum: NGVD29  NAVD88
- Meas. Units: Metric  Imperial

Corner - Left as found  Found and tagged  Established  Reestablished  Rebuilt

Identification and type of corner found: Evidence used to identify or procedure used to establish or reestablish the corner:

IRON Pipe monuments on Evergreen Drive  
recently found @ 2003 MAPS 302

See Back

A description of the physical condition of the monument as found and as set or reset:

Street pavement reconstruction will destroy the iron pipes!  
Reference points set to reestablish at later date  
See Back

**SURVEYOR'S STATEMENT**

This Corner Record was prepared by me or under my direction in conformance with the Land Surveyor's Act on June 16, 2015

Signed Michael A. Brogan P.L.S or R.C.E. No. LS 5767



**COUNTY SURVEYOR'S STATEMENT**

This Corner Record was received June 23, 2015

and examined and filed July 2, 2015

Signed [Signature] P.L.S or R.C.E. No. 7821

Title DEPUTY



County Surveyor's Comment \_\_\_\_\_

# MAP OF

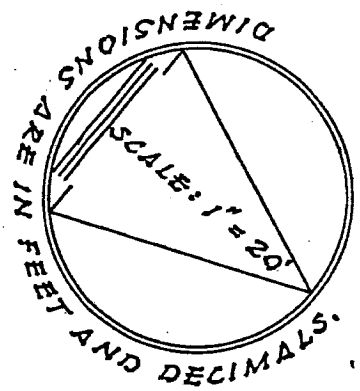
KENNY R.W.

356  
 TRANSAMERICA  
 TITLE .55  
 2717 O.R. 55

355  
 MODJTABAI  
 98-66368

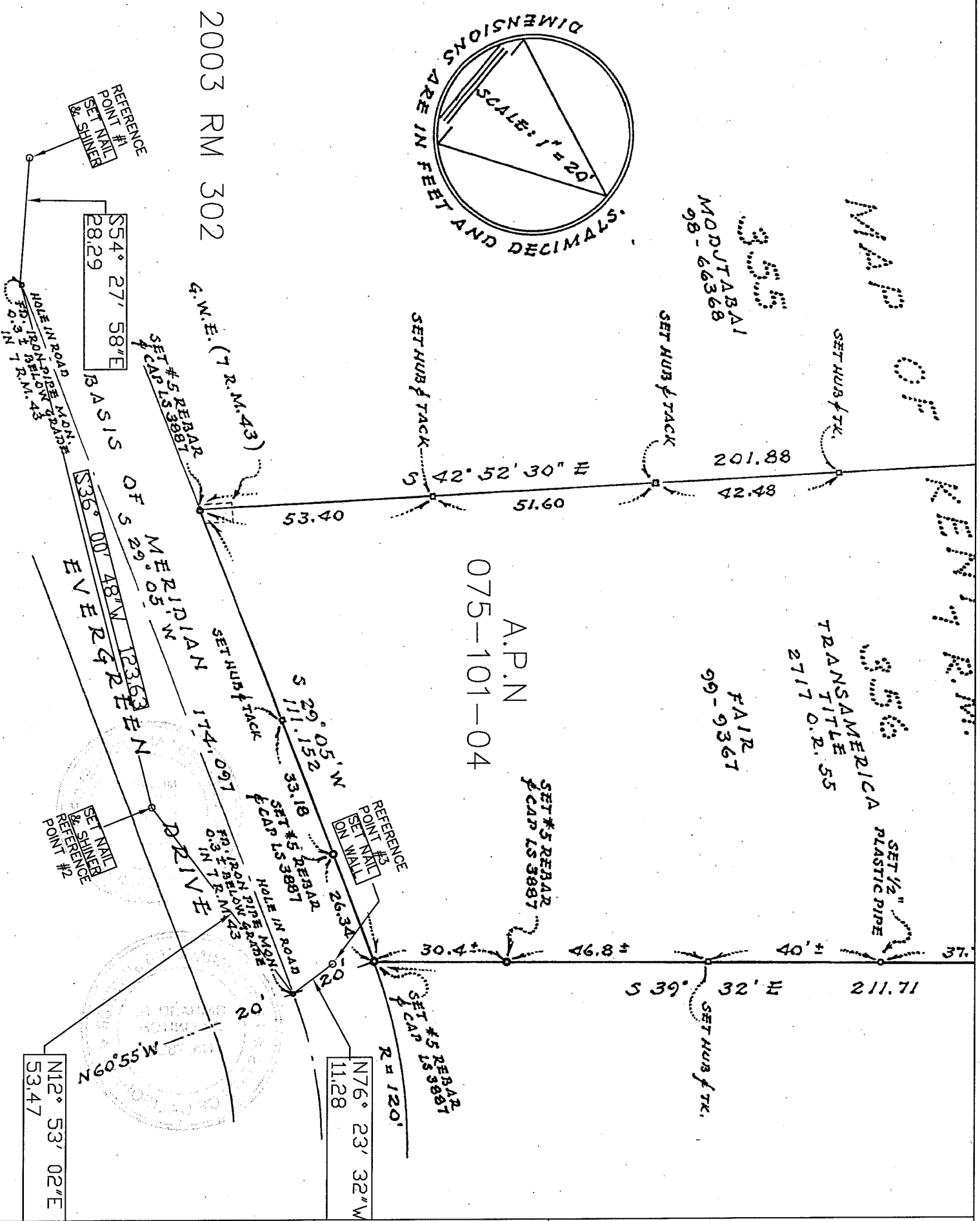
FAIR  
 99-9367

SET 1/2" PLASTIC PIPE



2003 RM 302

A.P.N  
 075-101-04



COUNTY OF MARIN  
 DEPARTMENT OF PUBLIC WORKS  
 SURVEY SECTION

SCALE: 1" = 30'

CORNER RECORD