

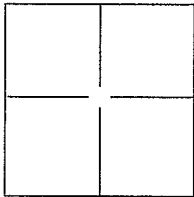
CORNER RECORD

Document Number 075-092-08

City of Kentfield

County of Marin, California

Brief Legal Description Control Monument – Rancheria Road, 5 RM 66



CORNER TYPE

Government Corner Control
 Meander Property
 Rancho Other

Date of Survey _____

COORDINATES (Optional)

N. _____
 E. _____
 Zone _____ NAD27 NAD83
 NAD83 Epoch _____
 Elev. _____
 Vert. Datum: NGVD29 NADV88
 Meas. Units: Metric Imperial

Corner - Left as found Found and tagged Established Reestablished Rebuilt

Identification and type of corner found: Evidence used to identify or procedure used to establish or reestablish the corner:

REFERENCED FOUND IRON PIPES ON RANCHERIA ROAD, AS SHOWN ON 5RM66, WITH SET MAG NAIL ON EDGE OF DRIVEWAY, WOOD WALL, ROCK WALL, AND AT GATE (SEE ATTACHED SKETCH).

A description of the physical condition of the monument as found and as set or reset: MONUMENTS REESTABLISHED AFTER CONSTRUCTION WITH STANDARD MARIN COUNTY SURVEY MONUMENT, AS SHOWN ON UNIFORM STANDARDS OF COUNTY OF MARIN DRAWING No. 300. (SEE ATTACHED SKETCH)

SURVEYOR'S STATEMENT

This Corner Record was prepared by me or under my direction in conformance with the Land Surveyor's Act on JANUARY 08, 2016.

Signed T.W. Park P.L.S. or R.C.E. No.: 8176



COUNTY SURVEYOR'S STATEMENT

This Corner Record was received January 8, 2016 and examined and filed January 12, 2016.

Signed Richard G. Simonitch P.L.S. or R.C.E. No.: 7821

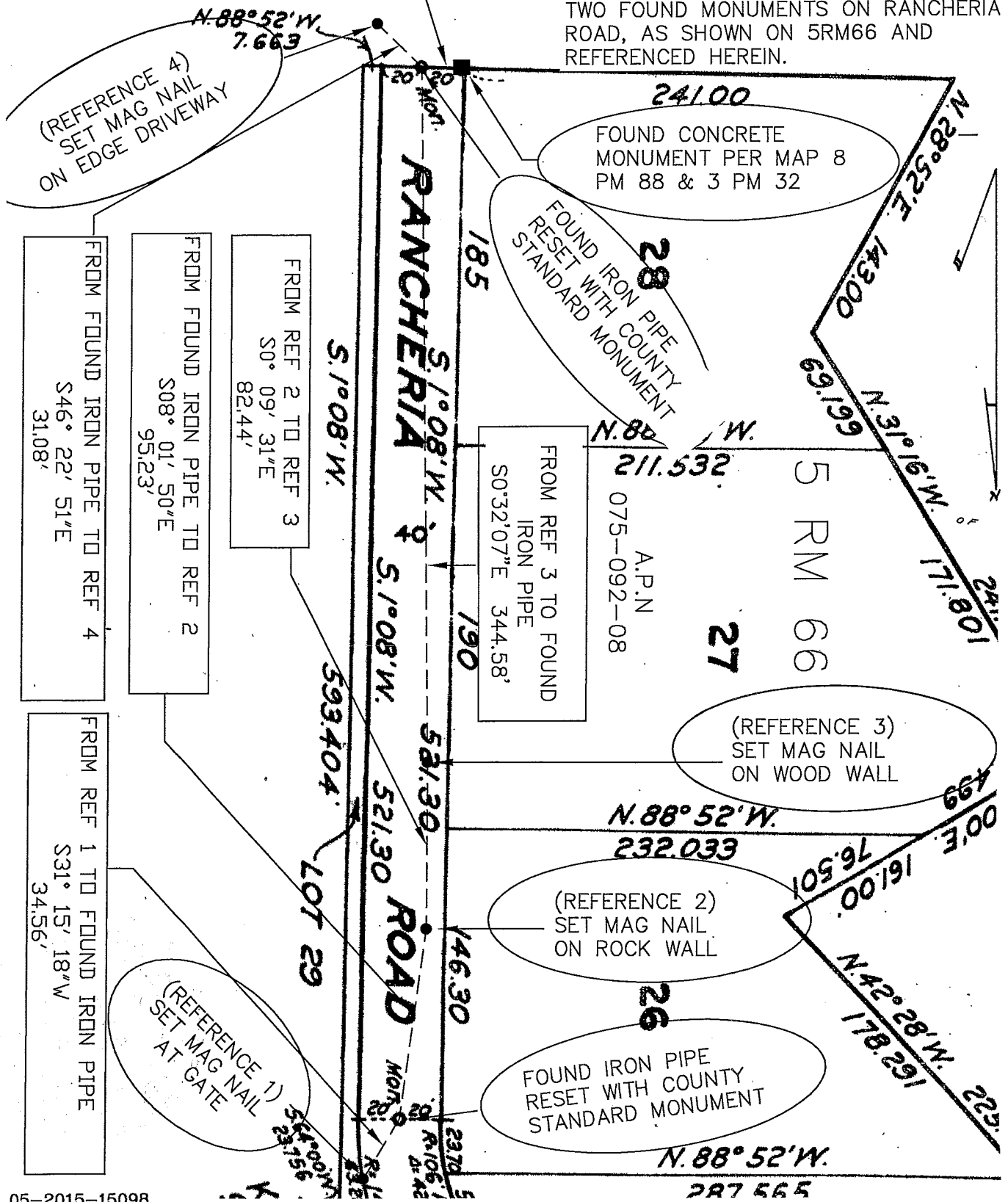
Title County Surveyor

County Surveyor's Comment _____



FROM FND IP TO FND CONC. MON.
N88°52'44"W 19.71'

BASIS OF BEARING
THE BASIS OF BEARING FOR THIS
CORNER RECORD IS S01°08'W BETWEEN
TWO FOUND MONUMENTS ON RANCHERIA
ROAD, AS SHOWN ON 5RM66 AND
REFERENCED HEREIN.



05-2015-15098

COUNTY OF MARIN
DEPARTMENT OF PUBLIC WORKS
SURVEY SECTION

SCALE: 1" = 70'

CORNER RECORD