

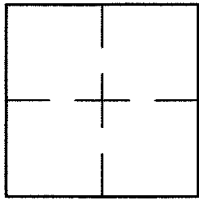
CORNER RECORD

Document Number A.P. 075-081-03

City of KENTFIELD

County of MARIN, California

Brief Legal Description LOT 168 PER 6 R.M. 2



CORNER TYPE

COORDINATES (Optional)

Government Corner Control

Meander Property

Rancho Other

Date of Survey 3/31/15

N. _____
 E. _____
 Zone _____ NAD27 NAD83
 NAD83 Epoch _____
 Elev. _____
 Vert. Datum: NGVD29 NAVD88
 Meas. Units: Metric Imperial

Corner- Left as found Found and tagged Established Reestablished Rebuilt

Identification and type of corner found: Evidence used to identify or procedure used to establish or reestablish the corner:

FOUND HUB REMNANTS AND TAG L.S. 3887 WHICH WAS SET IN 1988 PER CORNER RECORD. RESET WITH
3/4" PIPE/PLUG L.S. 4694. SEE SHEET 2.

A description of the physical condition of the monument as found and as set or reset: SEE SHEET 2.

SURVEYOR'S STATEMENT

This Corner Record was prepared by me or under my direction in conformance with

the Land Surveyor's Act on APRIL 2, 2015

Signed Lawrence P. Doyle P.L.S. or R.C.E. No. P.L.S. 4694



COUNTY SURVEYOR'S STATEMENT

This Corner Record was received 22 MAY 2015

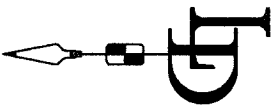
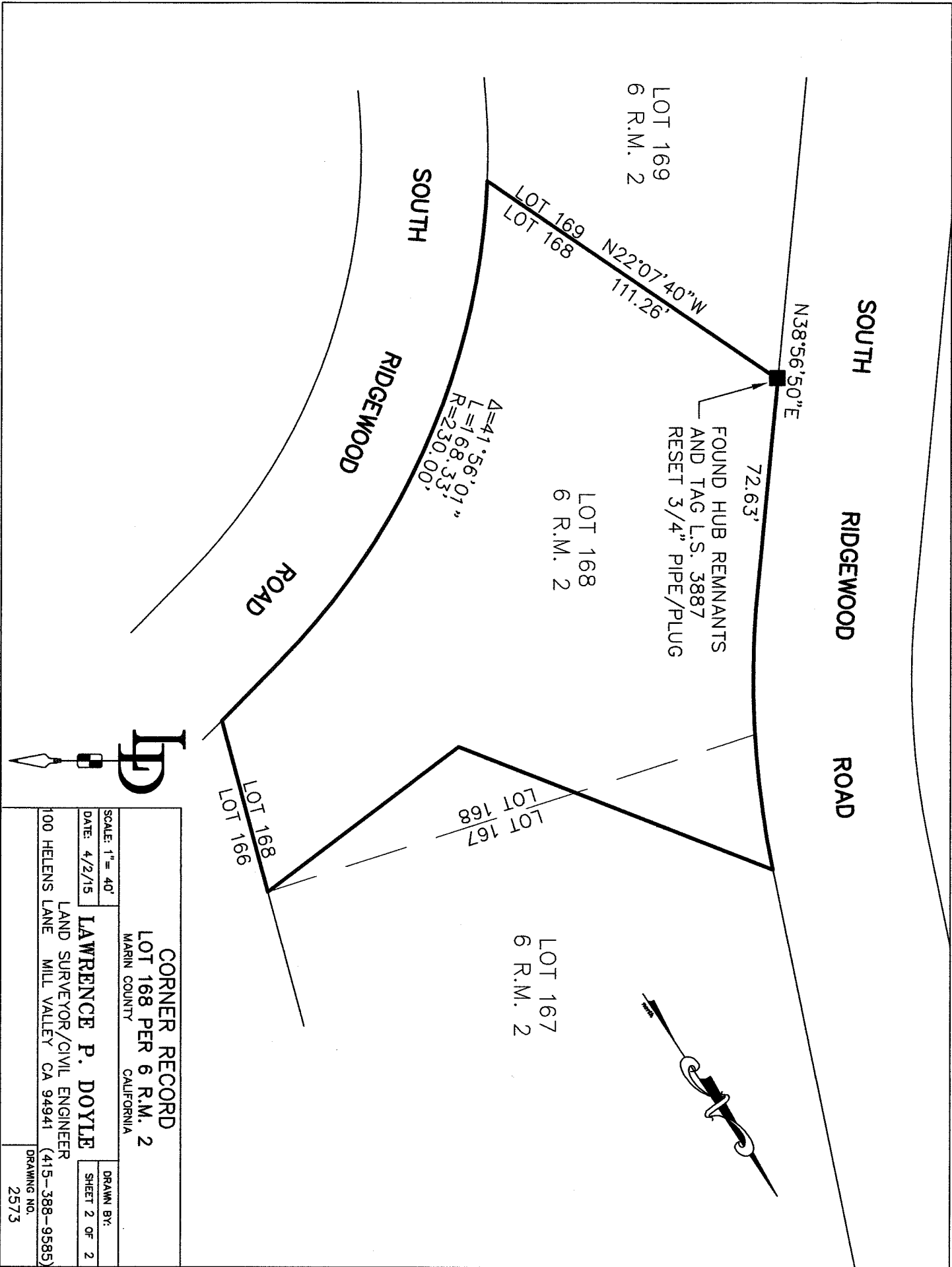
and examined and filed July 16, 2015

Signed Richard G. Simonitch P.L.S. or R.C.E. No. 7821

Title County Surveyor



County Surveyor's Comment _____



CORNER RECORD LOT 168 PER 6 R.M. 2 MARIN COUNTY CALIFORNIA	
SCALE: 1" = 40' DATE: 4/2/15	LAWRENCE P. DOYLE LAND SURVEYOR/CIVIL ENGINEER 100 HELENS LANE MILL VALLEY CA 94941 (415-388-9585)
DRAWN BY: SHEET 2 OF 2	DRAWING NO. 2573