

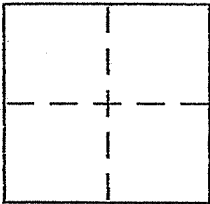
CORNER RECORD

Document Number 75-071-006

City of KENTFIELD

County of MARIN, California

Brief Legal Description UNOFFICIAL LOT 369, KENTWOODLANDS, SUB. 9 7 MAPS 43



CORNER TYPE

Government Corner Control
Meander Property
Rancho Other
Date of Survey July 15, 2006

COORDINATES (Optional)

N. _____
E. _____
Zone _____ NAD27 NAD83
NAD83 Epoch _____
Elev. _____
Vert. Datum: NGVD29 NAVD88
Meas. Units: Metric Imperial

Corner -- Left as found Found and tagged Established Reestablished Rebuilt

Identification and type of corner found: Evidence used to identify or procedure used to establish or reestablish the corner:

SET ADDITIONAL LINE POINT ON THE WESTERLY
LINE OF THE UNOFFICIAL LOT NO. 369, KENTWOODLANDS,
SUB 9, 7 MAPS 43; SAID LINE SURVEYED BY THIS OFFICE
PER 2003 MAPS 212. SEE SKETCH ON REVERSE SIDE FOR
DETAILS. (Note: ORIGINAL CORNER RECORD LOST)

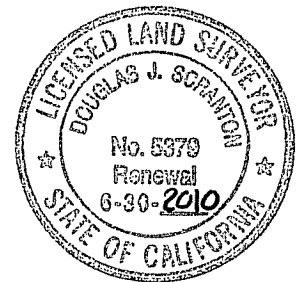
A description of the physical condition of the monument as found and as set or reset: set 1/2" rebar
PLS 5379 driven flush to surrounding grade.

SURVEYOR'S STATEMENT

This Corner Record was prepared by me or under my direction in conformance with

the Land Surveyor's Act on JULY 21 2008

Signed Douglas J. Scranton P.L.S. or R.C.E. No. PLS 5379



COUNTY SURVEYOR'S STATEMENT

This Corner Record was received JULY 23, 2008

and examined and filed JULY 23, 2008

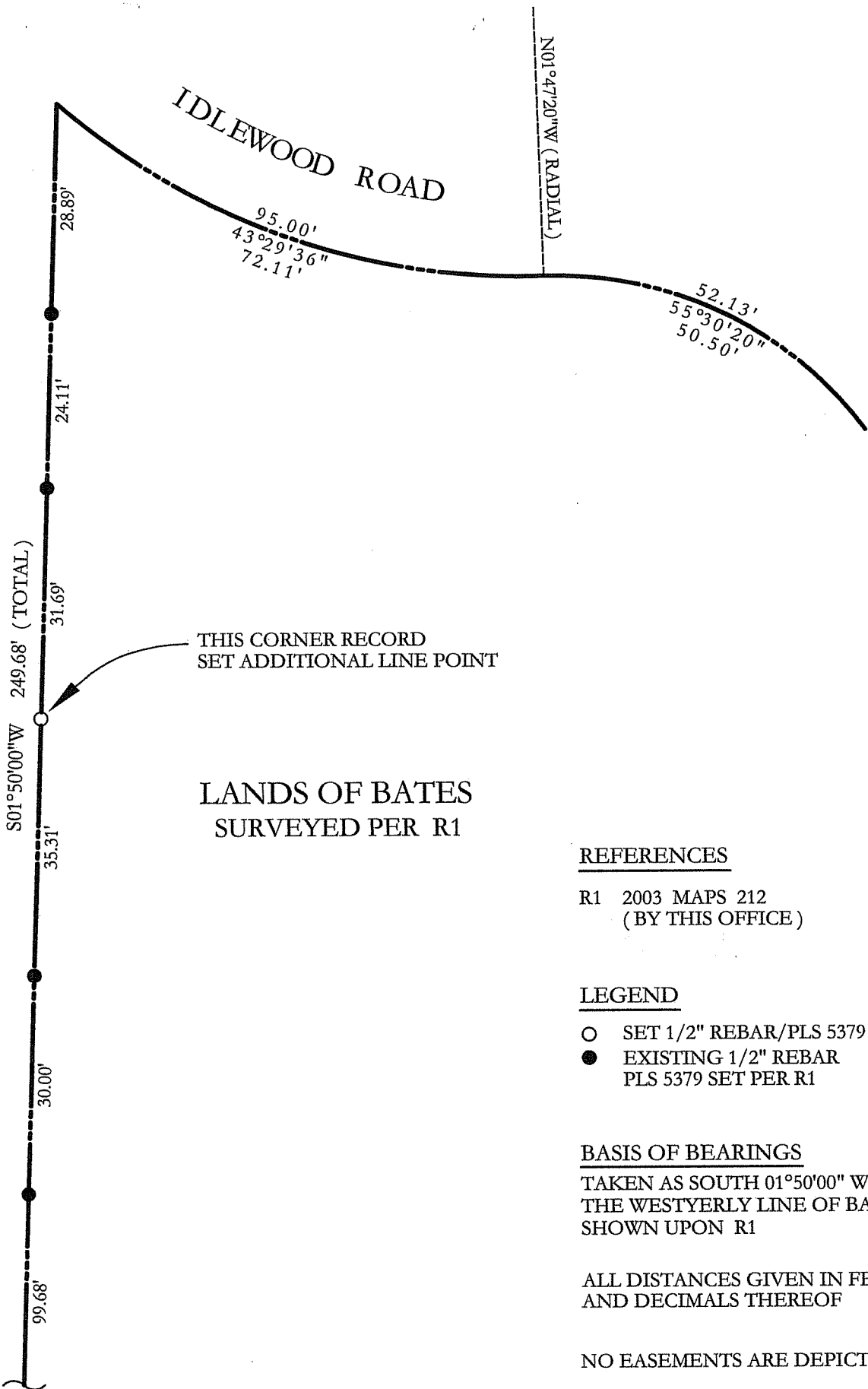
Signed [Signature] P.L.S. or R.C.E. No. 7128

Title COUNTY SURVEYOR



County Surveyor's Comment _____

PREPARED BY: DO SCRANTON SURVEYING NOVATO, CA



SCALE: 1"=20'

THIS CORNER RECORD
SET ADDITIONAL LINE POINT

**LANDS OF BATES
SURVEYED PER R1**

REFERENCES

R1 2003 MAPS 212
(BY THIS OFFICE)

LEGEND

- SET 1/2" REBAR/PLS 5379
- EXISTING 1/2" REBAR
PLS 5379 SET PER R1

BASIS OF BEARINGS

TAKEN AS SOUTH 01°50'00" WEST ALONG
THE WESTERLY LINE OF BATES AS
SHOWN UPON R1

ALL DISTANCES GIVEN IN FEET
AND DECIMALS THEREOF

NO EASEMENTS ARE DEPICTED