

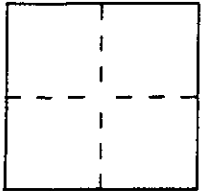
CORNER RECORD

Document Number A.P. 075-071-03

City of KENT WOODLANDS

County of MARIN, California

Brief Legal Description LOT 378 B.R.M. 6



CORNER TYPE

Government Corner Control
Meander Property
Rancho Other
Date of Survey 5/16/00

COORDINATES
(Optional)

N. _____
E. _____
Zone _____ Datum _____
Elev. _____

Corner — Left as found Found and tagged Established Reestablished Rebuilt

Identification and type of corner found: Evidence used to identify or procedure used to establish or reestablish the corner:
REESTABLISHED THE PROPERTY CORNERS FROM THE STREET MONUMENTS SHOWN ON B.R.M. 6

A description of the physical condition of the monument as found and as set or reset:
SEE PAGE 2

SURVEYOR'S STATEMENT

This Corner Record was prepared by me or under my direction in conformance with the Land Surveyors' Act on JUNE 23 2000
Signed Lawrence P. Doyle L.S. or R.C.E. Number P.L.S. 4694.



COUNTY SURVEYOR'S STATEMENT

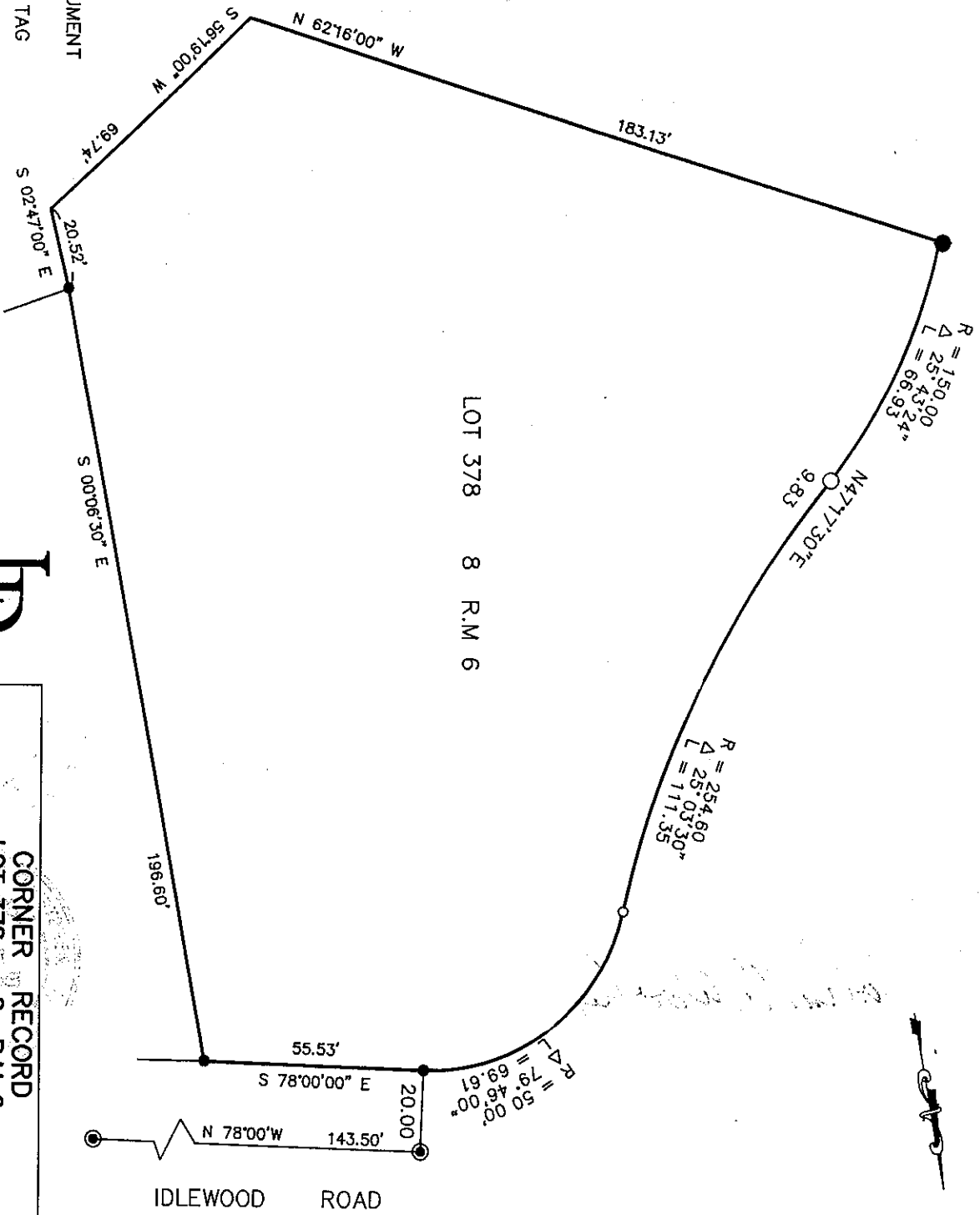
This Corner Record was received JULY 19, 2000 and examined and filed JULY 21, 2000
Signed John M. Wooley Title DEPUTY



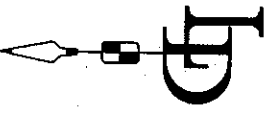
County Surveyor's Comment _____

- FD. CONCRETE MONUMENT AND TAG R.E. 3230
- SET IRON PIPE AND TAG P.L.S. 4694
- SET HUB AND TAG P.L.S. 4694
- FOUND EXISTING STREET MONUMENT

LEGEND



LOT 378 8 R.M. 6



CORNER RECORD LOT 378 8 R.M. 6 KENT WOODLANDS MARIN COUNTY CA	
SCALE: 1" = 40' DATE: 7/23/98	DRAWN BY: SHEET 2 OF 2
LAWRENCE P. DOYLE LAND SURVEYOR/CIVIL ENGINEER P.O. BOX 1609 MILL VALLEY CA 94942 (415-388-9585)	
DRAWING NO. 573-98	