

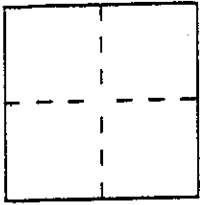
CORNER RECORD

Document Number A.P. # 75-062-15

City of KENTFIELD

County of MARIN, California

Brief Legal Description LOT 441 "MAP OF KENTWOODLANDS SUB. NO. 13, MARIN CO, CA"



CORNER TYPE

- Government Corner
- Meander
- Rancho
- Date of Survey _____
- Control
- Property
- Other

COORDINATES (Optional)

N. _____
 E. _____
 Zone _____ Datum _____
 Elev. _____

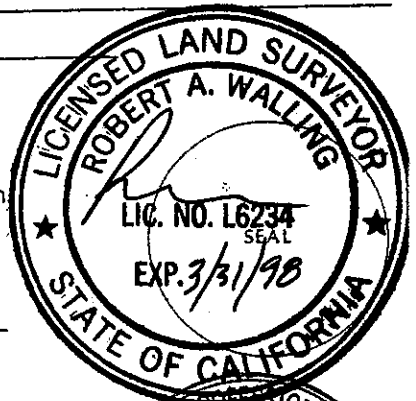
Corner — Left as found Found and tagged Established Reestablished Rebuilt

Identification and type of corner found: Evidence used to identify or procedure used to establish or reestablish the corner:
FOUND NAIL AND TAG IN DRIVEWAY, STREET MONUMENTS * IRON PIPES WITH PLASTIC CAPS, AS INDICATED. MONUMENTS USED AS BASIS FOR RECOVERY AND SETTING OF CORNERS AND LINE POINTS.

A description of the physical condition of the monument as found and as set or reset: GOOD CONDITION AND NOT DISTURBED.

SURVEYOR'S STATEMENT

This Corner Record was prepared by me or under my direction in conformance with the Land Surveyors' Act on SEPT. 17 19 97.
 Signed [Signature] L.S. or R.C.E. Number PLS 6234

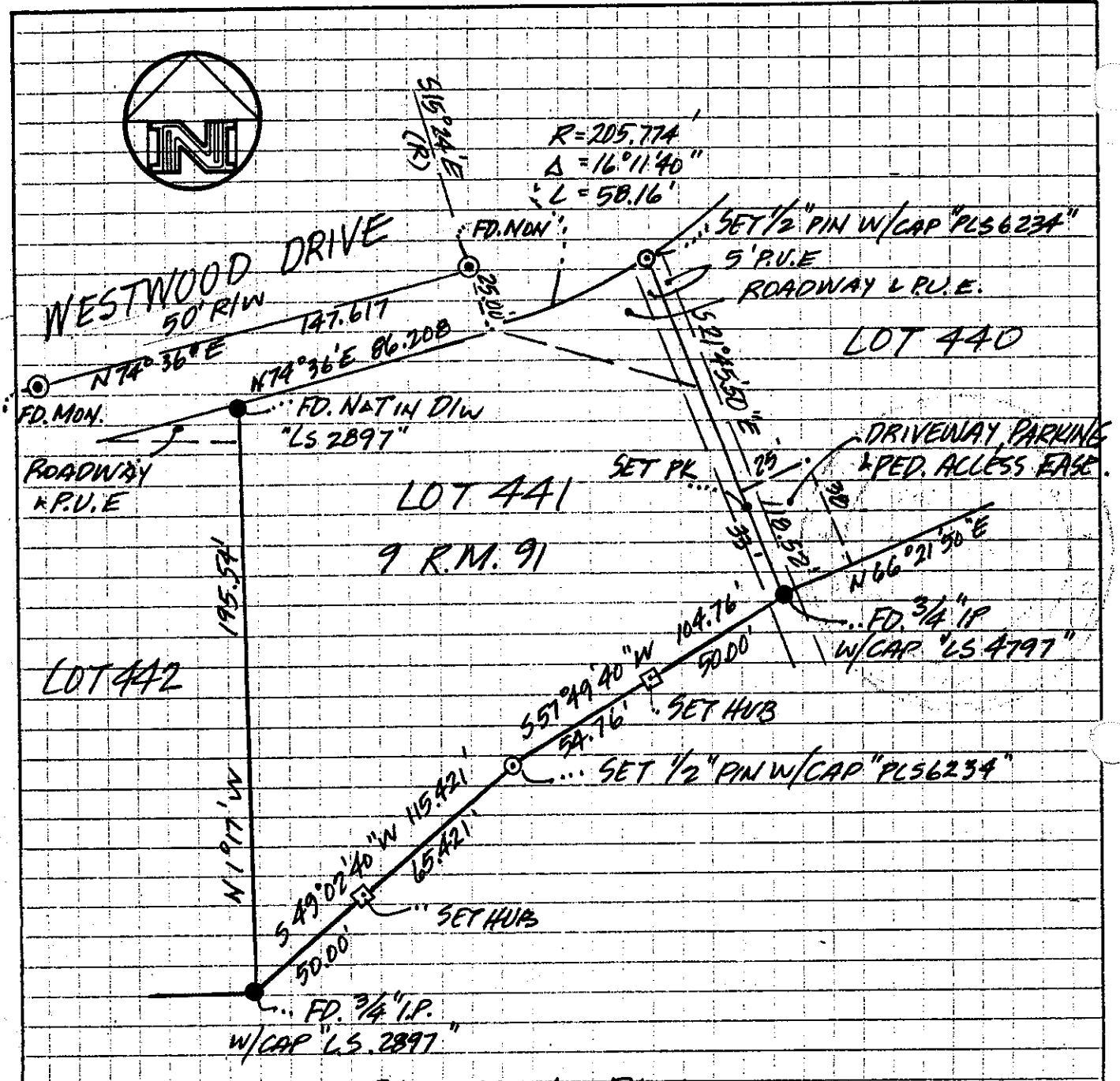
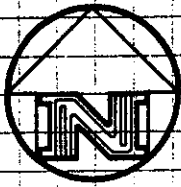


COUNTY SURVEYOR'S STATEMENT

This Corner Record was received SEPT. 23 19 97 and examined and filed SEPT. 23 19 97.
 Signed John M. Woolley Title Deputy



County Surveyor's Comment _____



SURVEY PLAT

LANDS OF CURTIS
 90 WESTWOOD DR.
 KENTFIELD, CA.

APN. 75-062-15

SEPT. 1997

SCALE 1"=50'

JN. 97.51



BOB WALLING TECHNICAL SERVICES
 P.O. Box 1346 • Glen Ellen, CA 95442
 (707) 938-1593 (415) 382-1593