

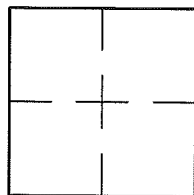
CORNER RECORD

Document Number A.P. 75-062-05

City of KENTFIELD

County of MARIN, California

Brief Legal Description LOT 403 PER 8 R.M. 6



CORNER TYPE                      COORDINATES (Optional)

Government Corner       Control   
Meander                       Property   
Rancho                       Other   
Date of Survey 09/06/16

N. \_\_\_\_\_  
E. \_\_\_\_\_  
Zone \_\_\_\_\_ NAD27       NAD83   
NAD83 Epoch \_\_\_\_\_  
Elev. \_\_\_\_\_  
Vert. Datum:      NGVD29       NAVD88   
Meas. Units:      Metric       Imperial

Corner-    Left as found     Found and tagged     Established     Reestablished     Rebuilt

Identification and type of corner found: Evidence used to identify or procedure used to establish or reestablish the corner:  
REESTABLISHED FRONT CORNERS OF LOT 403 PER 8 R.M. 6 USING FOUND STREET MONUMENTS ON WESTWOOD DRIVE PER 8 R.M. 6 AND AS SHOWN ON SHEET 2.

A description of the physical condition of the monument as found and as set or reset: SEE SHEET 2.

SURVEYOR'S STATEMENT

This Corner Record was prepared by me or under my direction in conformance with  
the Land Surveyor's Act on SEPTEMBER 6 2016

Signed Lawrence P. Doyle      P.L.S. or R.C.E. No. P.L.S. 4694



COUNTY SURVEYOR'S STATEMENT

This Corner Record was received OCTOBER 25, 2016

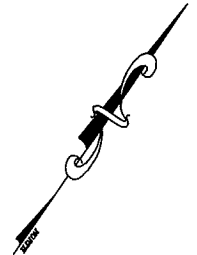
and examined and filed 1/18/2017

Signed T.W. Park      P.L.S. or R.C.E. No. 8176

Title COUNTY SURVEYOR



County Surveyor's Comment \_\_\_\_\_



LOT 401

LOT 402

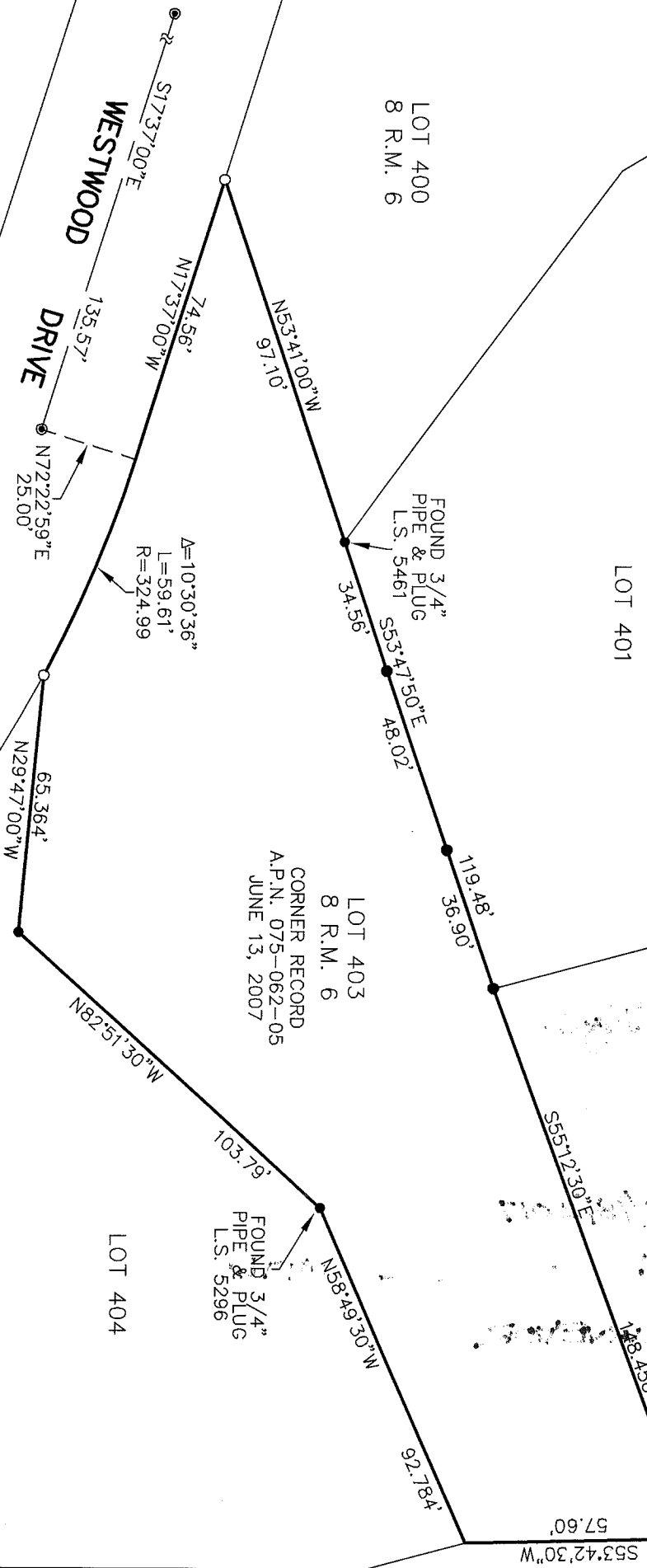
LOT 400  
8 R.M. 6

LOT 403  
8 R.M. 6

LOT 404

CORNER RECORD  
A.P.N. 075-062-05  
JUNE 13, 2007

WESTWOOD  
DRIVE



$\Delta = 10'30.36''$   
 $L = 59.61'$   
 $R = 324.99'$

FOUND 3/4"  
PIPE & PLUG  
L.S. 5461

FOUND 3/4"  
PIPE & PLUG  
L.S. 5296

**LEGEND**

- FOUND STREET MONUMENT PER 8 R.M. 6 (LOCATED IN 2007, NOW BURIED)
- FOUND PIPE & PLUG, L.S. 4694, UNLESS NOTED OTHERWISE, PER CORNER RECORD DATED 06/13/07
- SET PIPE & PLUG L.S. 4694



<b>CORNER RECORD</b>	
<b>LOT 403 / 8 R.M. 6</b>	
KENTFIELD	CALIFORNIA
MARIN COUNTY	
SCALE: 1" = 40'	DRAWN BY:
DATE: 09/06/16	SHEET 2 OF 2
<b>LAWRENCE P. DOYLE</b>	
LAND SURVEYOR/CIVIL ENGINEER	
100 HELENS LANE MILL VALLEY CA 94942 (415-388-9585)	
DRAWING NO.	2689-16