

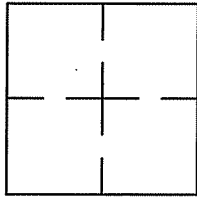
CORNER RECORD

Document Number APN 75-052-03

City of KENTFIELD

County of Marin, California

Brief Legal Description Record of Survey "New Monuments for Kent Avenue" filed in Book 19 of Official Surveys, at Page 24, Marin County Records. Adjacent APN 075-052-03



CORNER TYPE

Government Corner Control
Meander Property
Rancho Other
Date of Survey JULY 16, 2010

COORDINATES (Optional)

N. _____
E. _____
Zone _____ Datum _____
Elev. _____
Vert. Datum: NGVD29 NAVD88
Meas. Units: Metric Imperial

Corner — Left as found Found and tagged Established Reestablished Rebuilt

Identification and type of corner found: Evidence used to identify or procedure used to establish or reestablish the corner:
The existing centerline monument, shown as being set at the intersection of Kent Avenue and Woodland Road on the Record of Survey filed in Book 19, of Official Surveys, at Page 24, was occupied using conventional surveying equipment and a random baseline was then established. Cross cut reference points were scribed in concrete at random distance and turning right angles from the established baseline prior to the monument being destroyed due to sewer improvements. The reference points were occupied in order to reestablish the position of the replaced centerline monument.

A description of the physical condition of the monument as found and as set or reset: _____
The found monument was a 3" brass disk in a standard monument well, stamped Marin Public Works Department.
A 2" brass disc stamped PLS 8614 was set in a standard monument well at the intersection of Kent Avenue and Woodland Road.

SURVEYOR'S STATEMENT

This Corner Record was prepared by me or under my direction in conformance with the Land Surveyor's Act on April 27, 2011

Signed *Anthony G. Cinquini* P.L.S. or R.C.E. No. 8614



COUNTY SURVEYOR'S STATEMENT

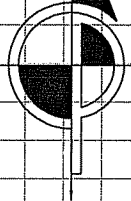
This Corner Record was received APRIL 29, 2011 and examined and filed MAY 26, 2011

Signed _____ P.L.S. or R.C.E. No. 7128
Title COUNTY SURVEYOR

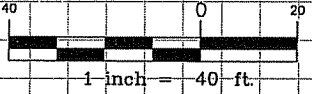


County Surveyor's Comments _____

Copyright © 2008 Conquistador & Paganino, Inc.



GRAPHIC SCALE

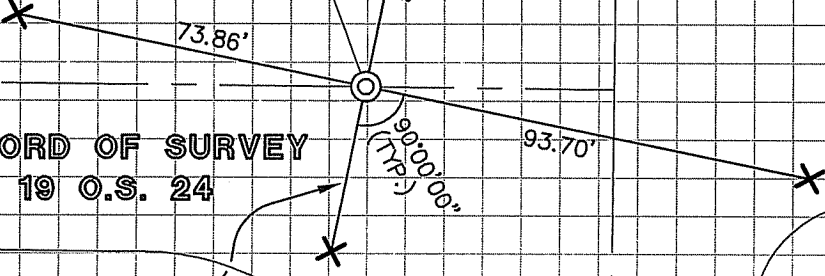


WOODLAND ROAD

RECORD OF SURVEY
19 O.S. 24

KENT AVE

COLLEGE AVE



DISTANCE NOT RECORDED
USED FOR LINE ONLY

LEGEND

- ⊙ SET 2" BRASS DISK STAMPED
PLS 8614 IN A STANDARD
MONUMENT WELL
- ✕ SET CROSS CUT-IN CONCRETE
AS REFERENCE POINT