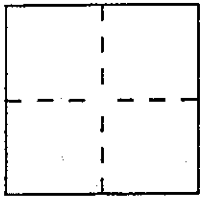


# CORNER RECORD

Document Number 75-051-07

City of (VICINITY) Kentwoodlands County of MARIN, California

Brief Legal Description Portion of Lot 44, Kentwoodlands, Subv. 1 (5 RM 74)  
APN 75-051-07



### CORNER TYPE

- Government Corner
- Meander
- Rancho
- Date of Survey \_\_\_\_\_
- Control
- Property
- Other

### COORDINATES (Optional)

N. \_\_\_\_\_  
E. \_\_\_\_\_  
Zone \_\_\_\_\_ Datum \_\_\_\_\_  
Elev. \_\_\_\_\_

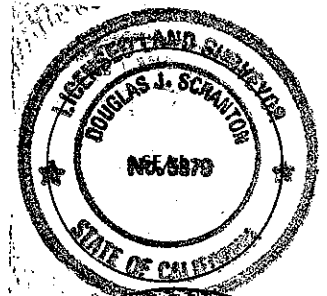
Corner — Left as found  Found and tagged  Established  Reestablished  Rebuilt

Identification and type of corner found: Evidence used to identify or procedure used to establish or reestablish the corner:  
Reestablish property angle points along the westerly & southerly  
lines to Lot 44 of the MAP of Kentwoodlands, Subv. No. 1, 5 RM 74  
from existing monumentation on RANCHERIA ROAD & AS SAID  
MONUMENTATION IS DEPICTED UPON 5 RM 74 & 5 RM 66.  
see sketch page 2 for detail

A description of the physical condition of the monument as found and as set or reset:  
set 1/2" rebar with PLS CAP 5379 AFFIXED TO TOP. (3 corner  
points set)

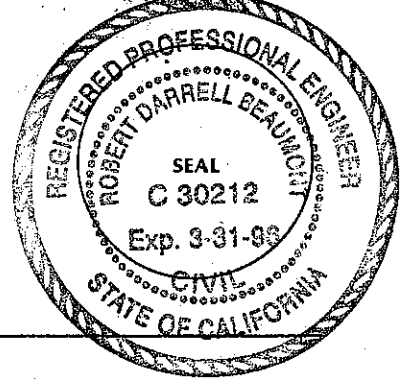
### SURVEYOR'S STATEMENT

This Corner Record was prepared by me or under my direction in conformance with  
the Land Surveyors' Act on June 17<sup>th</sup> 1994.  
Signed Douglas J. Scaitor L.S. or R.C.E. Number PLS 5379  
renewal 6-30-96



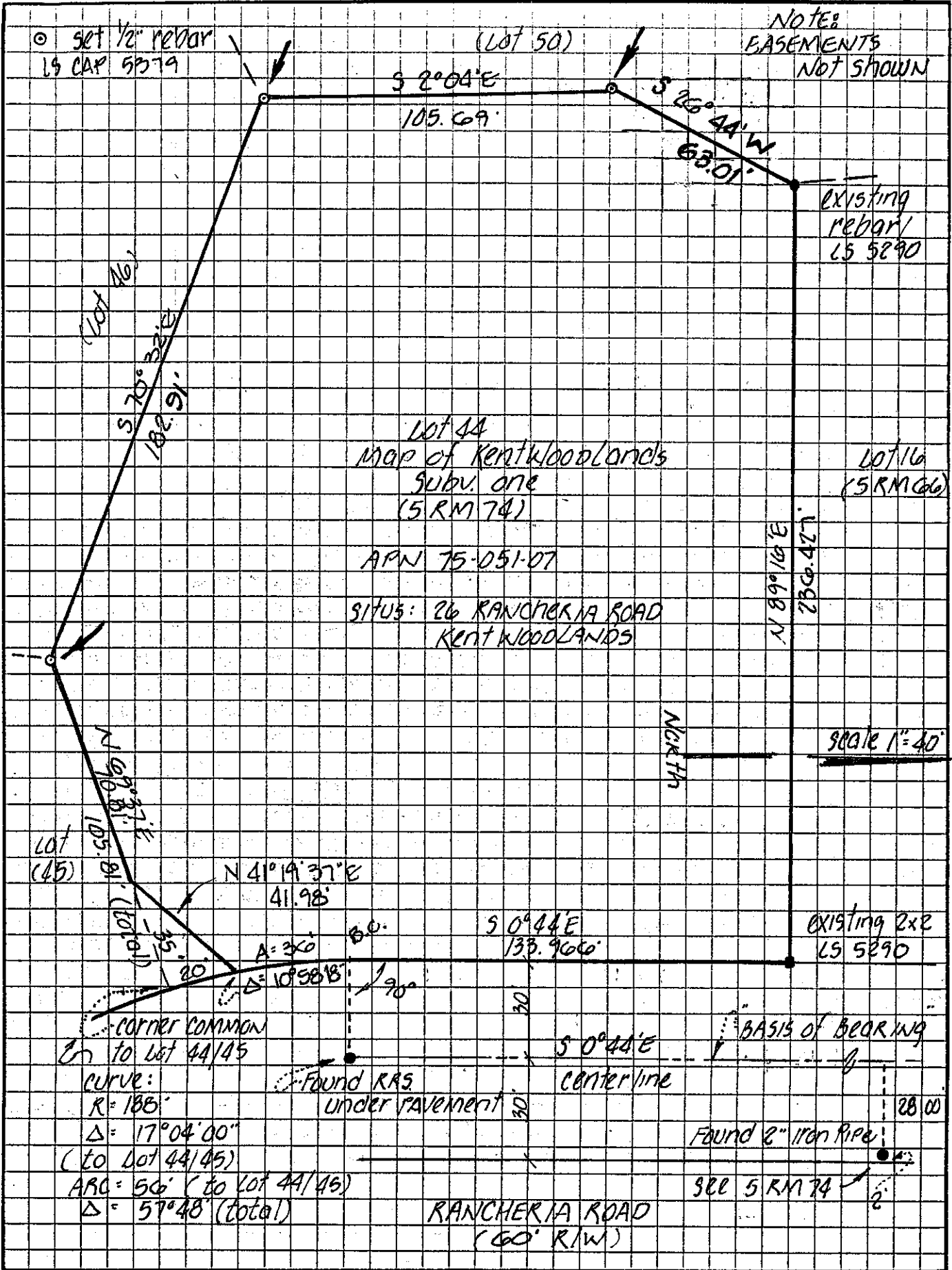
### COUNTY SURVEYOR'S STATEMENT

This Corner Record was received 6-17 1994 and examined  
and filed 6-20 1994.  
Signed RSB Title DES



County Surveyor's Comment \_\_\_\_\_

RECORDED BY: DJ SCRANTON SURVEYING 845 COLE AVE SUITE 208 NOVATO, CALIF 94945



○ set 1/2" rebar  
 LS CAP 5379

NOTES  
 EASEMENTS  
 NOT SHOWN

(Lot 50)

S 2°04'E  
 105.69'

S 26°44'W  
 68.01'

existing  
 rebar/  
 LS 5290

(Lot 16)

S 20°32'E  
 182.91'

Lot 44  
 Map of Kentwoodlands  
 Subv. one  
 (5 RM 74)

Lot 16  
 (5 RM 66)

APN 75-051-07

SITU: 26 RANCHERIA ROAD  
 KENTWOODLANDS

N 89°16'E  
 230.47'

SCALE 1"=40'

NORTH

Lot (45)

N 67°37'E  
 105.81'

N 4°19'37"E  
 41.98'

S 0°44'E  
 133.966'

existing 2x2  
 LS 5290

-CORNER COMMON  
 to Lot 44/45

Curve:  
 R=188'  
 Δ= 17°04'00"

(to Lot 44/45)  
 ARC= 56' (to Lot 44/45)  
 Δ= 57°48' (total)

Found RRS  
 under pavement

S 0°44'E  
 center line

BASIS OF BEARING

Found 2" Iron Pipe  
 SEE 5 RM 74

RANCHERIA ROAD  
 (60' R/W)