

L. A. Stevens & Associates, Inc.
Professional Land Surveyors
Novato, California

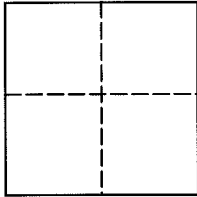
Lands of Morgan
Job #: 05-865

CORNER RECORD

Document Number 075-051-03

County of Marin, California

Brief Legal Description: Street Monument Adjacent to Lot 42, Map of Kent Woodlands, Subdivision No. One as Recorded in Book 5 at page 74, Marin County Records and as shown on 2006-RS-170.



CORNER TYPE

COORDINATES (Optional)

Government Corner Control

Meander Property

Rancho Other

Date of Survey April 04, 2005

N _____

E _____

Zone _____ NAD27 NAD83

NAD 83 Epoch _____

Elev. _____

Vert. Datum: NGVD29 NAVD88

Meas. Units: Metric Imperial

Corner - Left as found Found and tagged Established Reestablished Rebuilt

Identification and type of corner found: Evidence used to identify or procedure used to establish or reestablish the corner:
See Page 2

A description of the physical condition of the monument as found and as set or reset:
Found 1" Iron Pipe, Open. Set Yellow Plastic Plug, stamped, "LA STEVENS LS 6649"

SURVEYOR'S STATEMENT

This Corner Record was prepared by me or under my direction in conformance with
The Land Surveyor's Act on May 13, 2005.

Signed [Signature] P.L.S. 6649



COUNTY SURVEYOR'S STATEMENT

This Corner Record was received FEB. 25, 2014

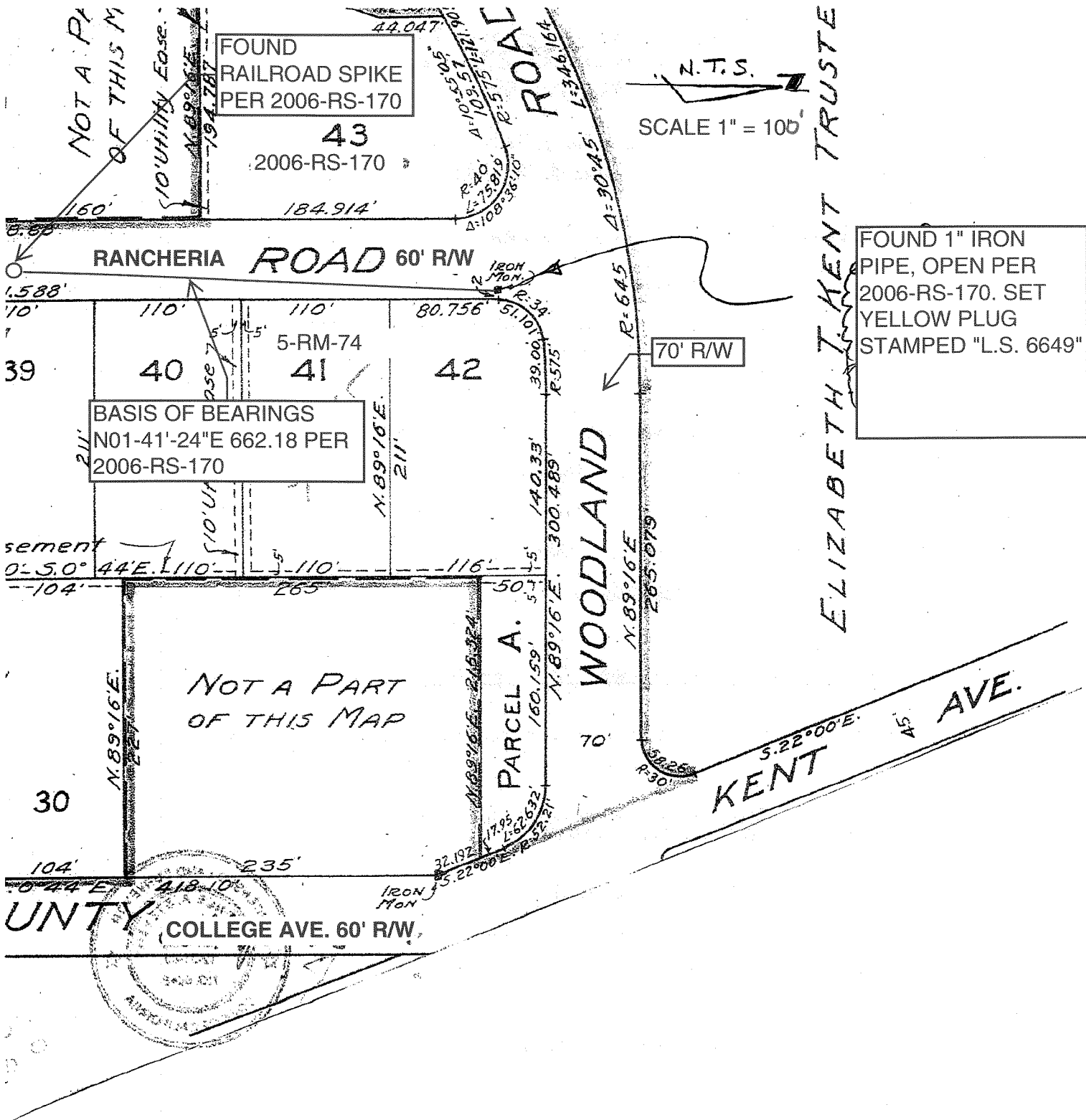
and examined and filed MAY 23, 2014

Signed [Signature] P.L.S. or R.C.E. No. 7821

Title DEPUTY

County Surveyors' Comment _____





N.T.S.
SCALE 1" = 100'

BASIS OF BEARINGS
N01-41'-24"E 662.18 PER
2006-RS-170

FOUND 1" IRON
PIPE, OPEN PER
2006-RS-170. SET
YELLOW PLUG
STAMPED "L.S. 6649"

FOUND RAILROAD SPIKE
PER 2006-RS-170
43
2006-RS-170

NOT A PART
OF THIS MAP

CORNER RECORD SKETCH
L.A. STEVENS & ASSOC., INC.
Professional Land Surveyors
7 Commercial Blvd., Suite 1
Novato, CA 94949
(415) 382-7713