

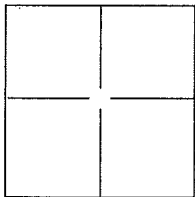
# CORNER RECORD

Document Number 075-042-06

City of Kentfield

County of Marin, California

Brief Legal Description Control Monument as shown on 17 RS 52



### CORNER TYPE

Government Corner  Control   
 Meander  Property   
 Rancho  Other

Date of Survey \_\_\_\_\_

### COORDINATES (Optional)

N. \_\_\_\_\_  
 E. \_\_\_\_\_  
 Zone \_\_\_\_\_ NAD27  NAD83   
 NAD83 Epoch \_\_\_\_\_  
 Elev. \_\_\_\_\_  
 Vert. Datum: NGVD29  NADV88   
 Meas. Units: Metric  Imperial

Corner - Left as found  Found and tagged  Established  Reestablished  Rebuilt

Identification and type of corner found: Evidence used to identify or procedure used to establish or reestablish the corner:

REFERENCED FOUND RAILROAD SPIKES ON EVERGREEN DRIVE, AS SHOWN ON 17RS52, WITH SET MAG NAIL IN CURB, CUT X ON BRIDGE CONCRETE, AND SET MAG NAIL AND SHINER AS SHOWN ON ATTACHED SKETCH.

A description of the physical condition of the monument as found and as set or reset: MONUMENTS REESTABLISHED AFTER CONSTRUCTION WITH STANDARD MARIN COUNTY SURVEY MONUMENT AS SHOWN ON UNIFORM STANDARDS OF COUNTY OF MARIN DRAWING No. 300.

### SURVEYOR'S STATEMENT

This Corner Record was prepared by me or under my direction in conformance with the Land Surveyor's Act on JANUARY 08, 2016.

Signed [Signature] P.L.S. or R.C.E. No.: 8176



### COUNTY SURVEYOR'S STATEMENT

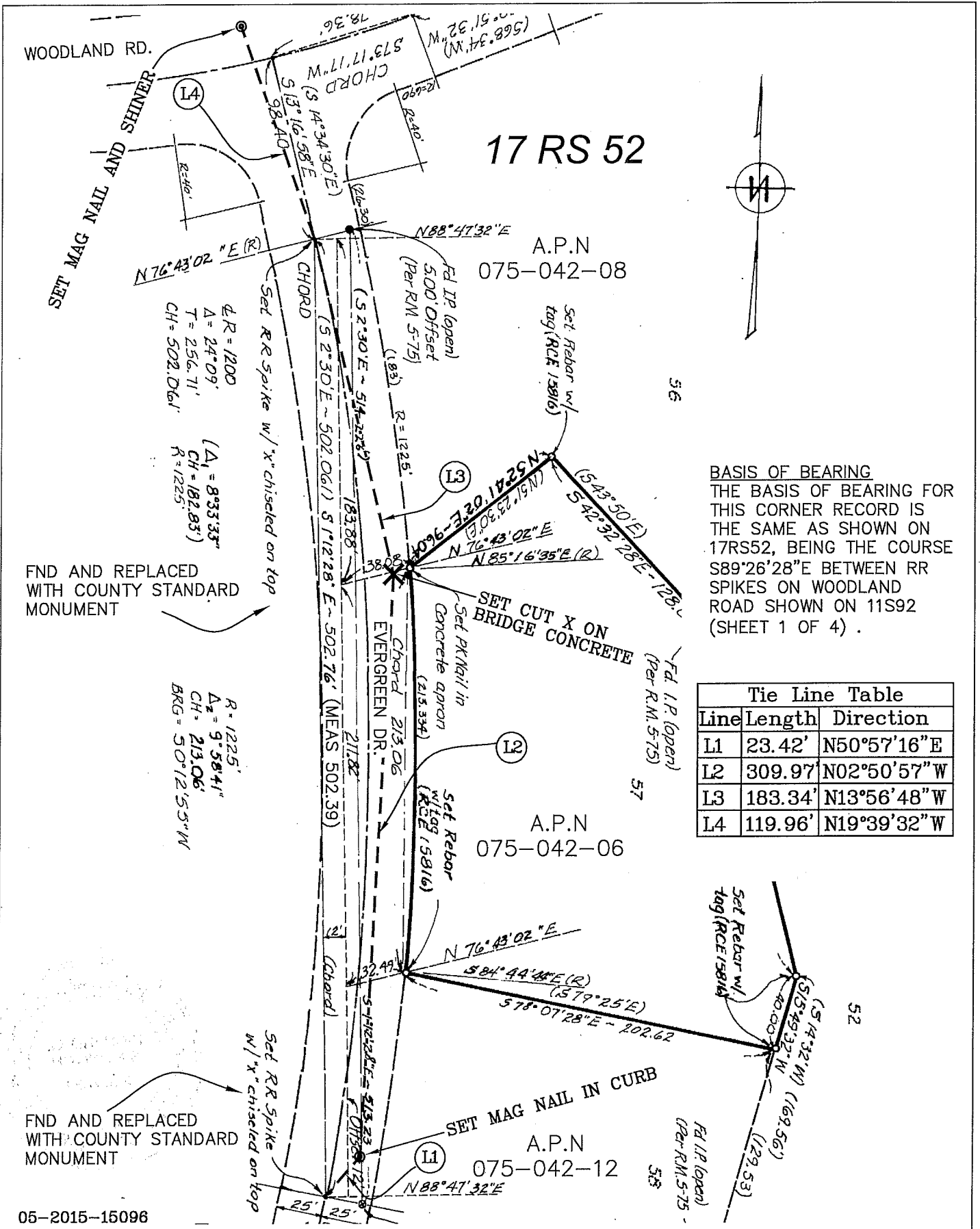
This Corner Record was received January 8, 2016 and examined and filed January 12, 2016.

Signed [Signature] P.L.S. or R.C.E. No.: 7821

Title County Surveyor

County Surveyor's Comment \_\_\_\_\_





**BASIS OF BEARING**  
 THE BASIS OF BEARING FOR THIS CORNER RECORD IS THE SAME AS SHOWN ON 17RS52, BEING THE COURSE S89°26'28"E BETWEEN RR SPIKES ON WOODLAND ROAD SHOWN ON 11S92 (SHEET 1 OF 4).

Tie Line Table		
Line	Length	Direction
L1	23.42'	N50°57'16"E
L2	309.97'	N02°50'57"W
L3	183.34'	N13°56'48"W
L4	119.96'	N19°39'32"W

**COUNTY OF MARIN**  
 DEPARTMENT OF PUBLIC WORKS  
 SURVEY SECTION

SCALE: 1" = 70'

**CORNER RECORD**