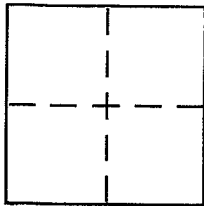


CORNER RECORD

Document Number 75-022-08
City of KENT WOODLANDS County of MARIN, California

Brief Legal Description LOT 176, KentWOODLANDS, SUB. 3, C RM 2



CORNER TYPE

Government Corner Control
Meander Property
Rancho Other
Date of Survey Oct. 12, 2004

COORDINATES (Optional)

N. _____
E. _____
Zone _____ NAD27 NAD83
NAD83 Epoch _____
Elev. _____
Vert. Datum: NGVD29 NAVD88
Meas. Units: Metric Imperial

Corner -- Left as found Found and tagged Established Reestablished Rebuilt

Identification and type of corner found: Evidence used to identify or procedure used to establish or reestablish the corner:

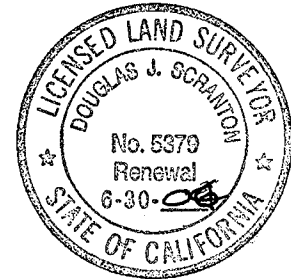
RE-ESTABLISH THE NORTHERLY LINE OF LOT 176 (COMMON WITH THE SOUTHERLY LINE OF UN-OFFICIAL LOT 174) FOR THE MAP OF KENT WOODLANDS, SUB 3, C RM 2 POINTS SET FROM EXISTING STREET MONUMENTS ON SOUTH RIDGEWOOD RD. SEE SKETCH ON REVERSE SIDE.

A description of the physical condition of the monument as found and as set or reset:

set 1/2" rebar with PLS CAP LS 5379 AFFIXED TO TOP & DRIVEN FLUSH WITH GROUND GRADE

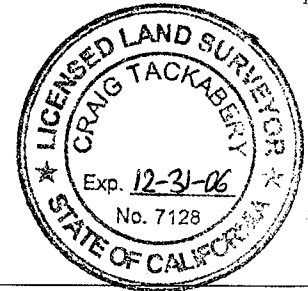
SURVEYOR'S STATEMENT

This Corner Record was prepared by me or under my direction in conformance with the Land Surveyor's Act on Oct. 20, 2004
Signed Douglas J. Scranton P.L.S or R.C.E. No. PLS 5379



COUNTY SURVEYOR'S STATEMENT

This Corner Record was received OCTOBER 26, 2004
and examined and filed NOVEMBER 17, 2004
Signed _____ P.L.S or R.C.E. No. 7128
Title COUNTY SURVEYOR

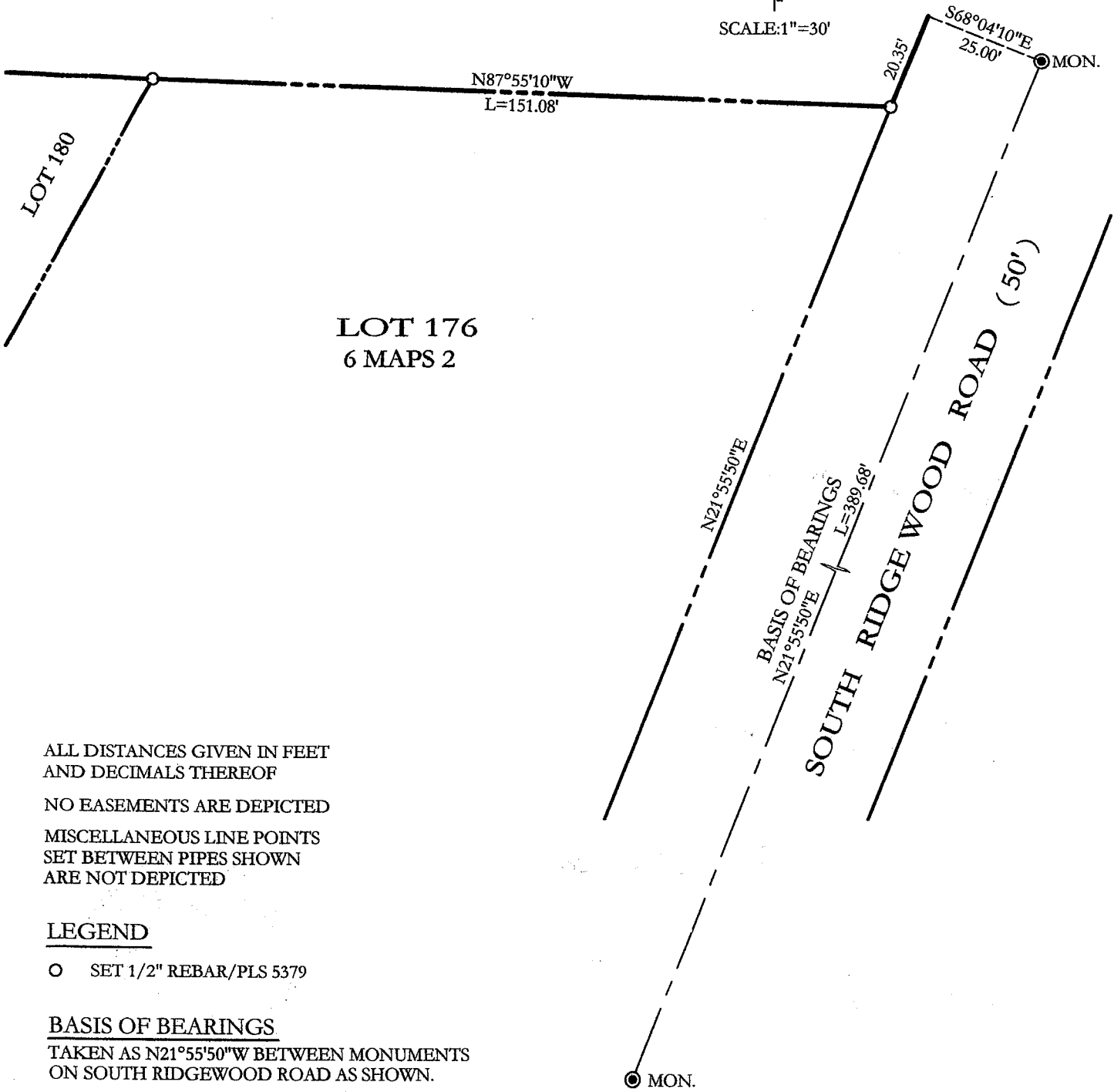


County Surveyor's Comment _____

Prepared by DJ SCRANTON SURVEYING NOV 20 TO CALIFORNIA

UN-OFFICIAL LOT 174
(NOT PART OF SUBDIVISION)

SCALE: 1"=30'



ALL DISTANCES GIVEN IN FEET
AND DECIMALS THEREOF

NO EASEMENTS ARE DEPICTED

MISCELLANEOUS LINE POINTS
SET BETWEEN PIPES SHOWN
ARE NOT DEPICTED

LEGEND

○ SET 1/2" REBAR/PLS 5379

BASIS OF BEARINGS

TAKEN AS N21°55'50"W BETWEEN MONUMENTS
ON SOUTH RIDGEWOOD ROAD AS SHOWN.

MAP OF
KENT WOODLANDS
SUBD. NO. THREE