

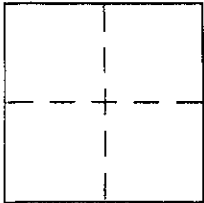
**CORNER RECORD**

Document Number A.P. 075-021-12

City of KENTFIELD

County of MARIN, California

Brief Legal Description LOT 373 7 R.M. 43



**CORNER TYPE**

Government Corner  Control   
Meander  Property   
Rancho  Other   
Date of Survey 8/13/01

**COORDINATES (Optional)**

N. \_\_\_\_\_  
E. \_\_\_\_\_  
Zone \_\_\_\_\_ NAD27  NAD83   
NAD83 Epoch \_\_\_\_\_  
Elev. \_\_\_\_\_  
Vert. Datum: NGVD29  NAVD88   
Meas. Units: Metric  Imperial

Corner - Left as found  Found and tagged  Established  Reestablished  Rebuilt

Identification and type of corner found: Evidence used to identify or procedure used to establish or reestablish the corner:  
ESTABLISHED THE PROPERTY CORNERS FROM  
STREET MONUMENTS AS SHOWN ON  
7 R.M. 43

A description of the physical condition of the monument as found and as set or reset: SEE PAGE 2

**SURVEYOR'S STATEMENT**

This Corner Record was prepared by me or under my direction in conformance with the Land Surveyor's Act on 8/13/01  
Signed Lawrence P Doyle P.L.S or R.C.E. No. PLS 4694



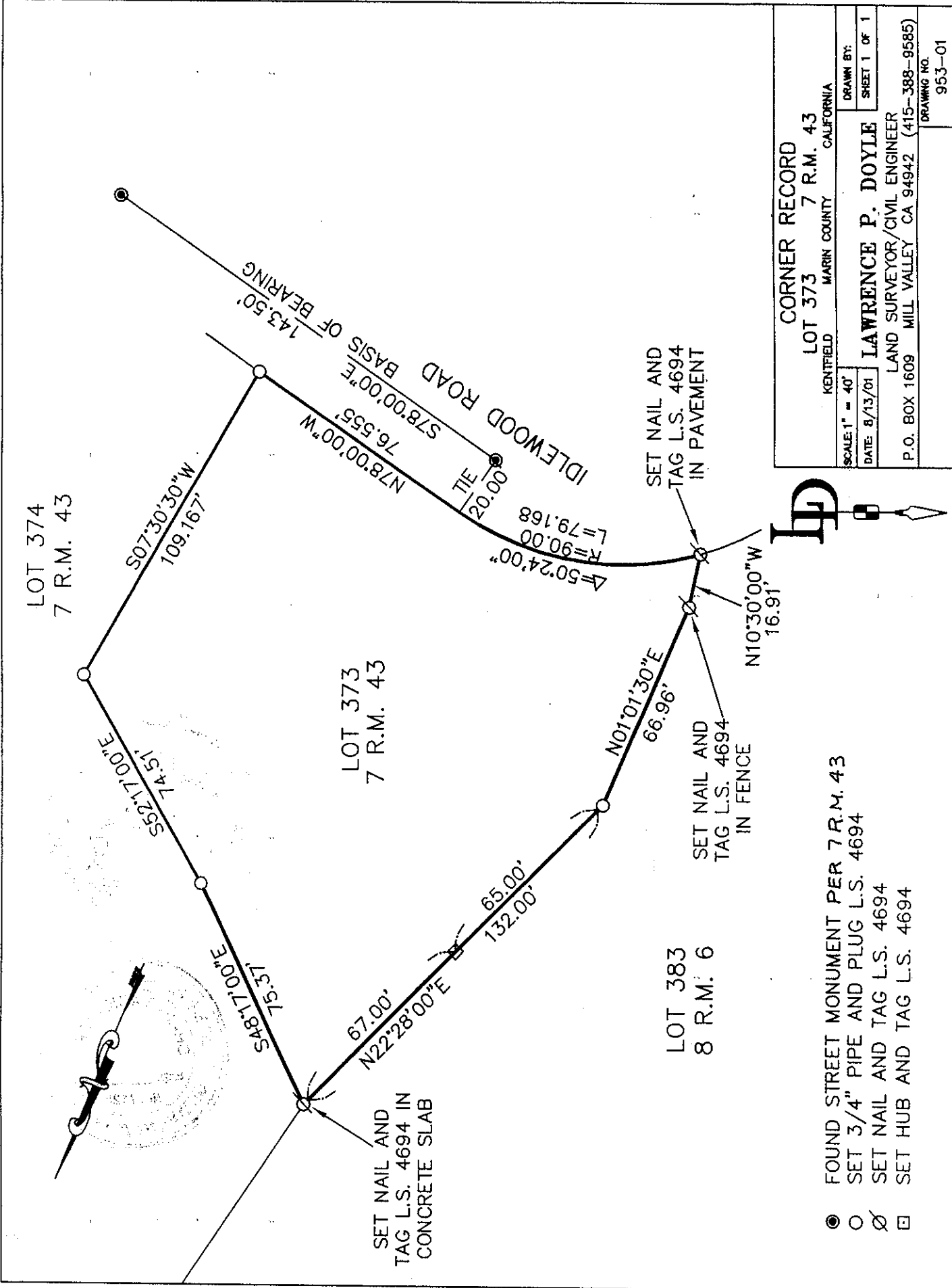
**COUNTY SURVEYOR'S STATEMENT**

This Corner Record was received 1-3-2002  
and examined and filed 1-8-2002  
Signed Craig Tackabery P.L.S or R.C.E. No. 7128  
Title DEPUTY



County Surveyor's Comment \_\_\_\_\_  
\_\_\_\_\_  
\_\_\_\_\_

**CORNER RECORD**  
 LOT 373 7 R.M. 43  
 KENTFIELD MARIN COUNTY CALIFORNIA  
 SCALE: 1" = 40'  
 DATE: 8/13/01  
 DRAWN BY: LAWRENCE P. DOYLE  
 SHEET 1 OF 1  
 LAND SURVEYOR/CIVIL ENGINEER  
 P.O. BOX 1609 MILL VALLEY CA 94942 (415-388-9585)  
 DRAWING NO. 953-01



- FOUND STREET MONUMENT PER 7 R.M. 43
- SET 3/4" PIPE AND PLUG L.S. 4694
- ∅ SET NAIL AND TAG L.S. 4694
- SET HUB AND TAG L.S. 4694