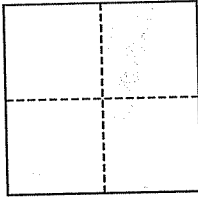


CORNER RECORD

City of Kentfield

Document Number APN 75-021-11
County of Marin, California

Brief Legal Description Lot 374, "Map of Kent Woodlands", 7-RM-43



CORNER TYPE

Government Corner Control
Meander Property
Rancho Other
Date of Survey January 13, 2006

COORDINATES (Optional)

N. _____
E. _____
Zone _____ NAD27 NAD83
NAD83 Epoch _____
Elev. _____
Vert. Datum: NGVD29 NAVD88
Meas. Units: Metric Imperial

Corner- Left as found Found and tagged Established Reestablished Rebuilt

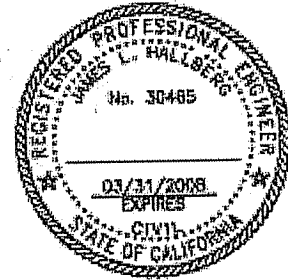
Identification and type of corner found: Evidence used to identify or procedure used to establish or reestablish the corner:
All points set in accordance with 7-RM-43.

A description of the physical condition of the monument as found and as set or reset: All corners set with 3/4" Iron Pipe & Plug, RCE 30465 and oints along Property Line set with 2"x2" Wood Hub & Tack, as shown on map.

SURVEYOR'S STATEMENT

This corner Record was prepared by me or under my direction in conformance with the Land Surveyor's Act on January 19, 2006

Signed Jay P. H. P.L.S. or R.C.E. No. 30465



COUNTY SURVEYOR'S STATEMENT

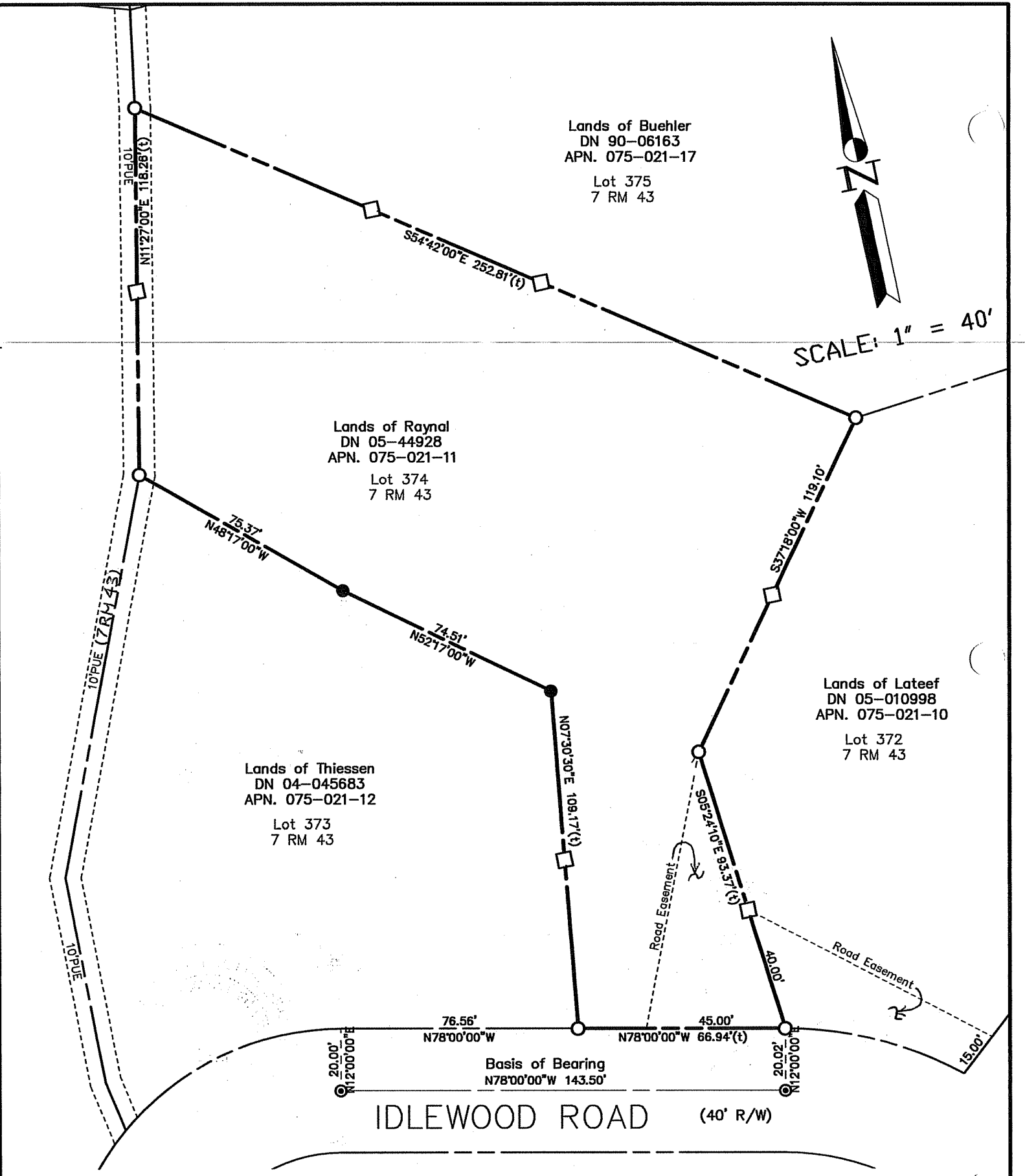
This Corner Record was received JANUARY 23, 2006
and examined and filed FEBRUARY 27, 2006

Signed _____ P.L.S. or R.C.E. No. 7128

Title COUNTY SURVEYOR



County Surveyor's Comment _____



SHEET	1	OF	1
SCALE:	1" = 40'	DESIGN:	XXX
DATE:	01-18-06	DRAWN:	PR
FILE:	2005-206	CHECKED:	J.L.H

G:\Land Projects\2005-206\dwg\CorRec.dwg

J.L. ENGINEERING
CIVIL ENGINEERS-LAND SURVEYORS
 1539 4th ST., SAN RAFAEL, CA. 94901 (415) 457-6647

Corner Record
 Lands of Raynal - 10 Idlewood
 APN 075-021-11, Kentfield, Marin County, CA