

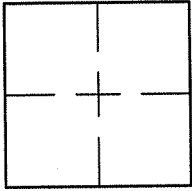
CORNER RECORD

Document Number A.P.# 074-291-01,02,03

City of KENTFIELD

County of MARIN, California

Brief Legal Description LOT 580, 14 R.M. 23



CORNER TYPE                      COORDINATES (Optional)

Government Corner       Control

Meander                       Property

Rancho                       Other

Date of Survey 12/20/05

N. \_\_\_\_\_  
 E. \_\_\_\_\_  
 Zone \_\_\_\_\_ NAD27       NAD83   
 NAD83 Epoch \_\_\_\_\_  
 Elev. \_\_\_\_\_  
 Vert. Datum:      NGVD29       NAVD88   
 Meas. Units:      Metric       Imperial

Corner-    Left as found     Found and tagged     Established     Reestablished     Rebuilt

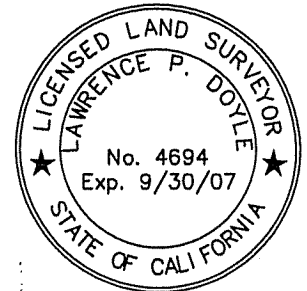
Identification and type of corner found: Evidence used to identify or procedure used to establish or reestablish the corner:  
ESTABLISHED FOREST PRESERVE BOUNDARY OF LOT 580 PER 14 R.M. 23 AND SET 3 POINTS ON THE  
EASTERN BOUNDARY AS NOTED ON SHEET 2

A description of the physical condition of the monument as found and as set or reset: SEE SHEET 2.

SURVEYOR'S STATEMENT

This Corner Record was prepared by me or under my direction in conformance with  
 the Land Surveyor's Act on FEBRUARY 10 2006

Signed Lawrence P. Doyle P.L.S. or R.C.E. No. P.L.S. 4694



COUNTY SURVEYOR'S STATEMENT

This Corner Record was received FEBRUARY 16, 2006

and examined and filed MARCH 14, 2006

Signed [Signature] P.L.S. or R.C.E. No. 7128

Title COUNTY SURVEYOR

County Surveyor's Comment \_\_\_\_\_

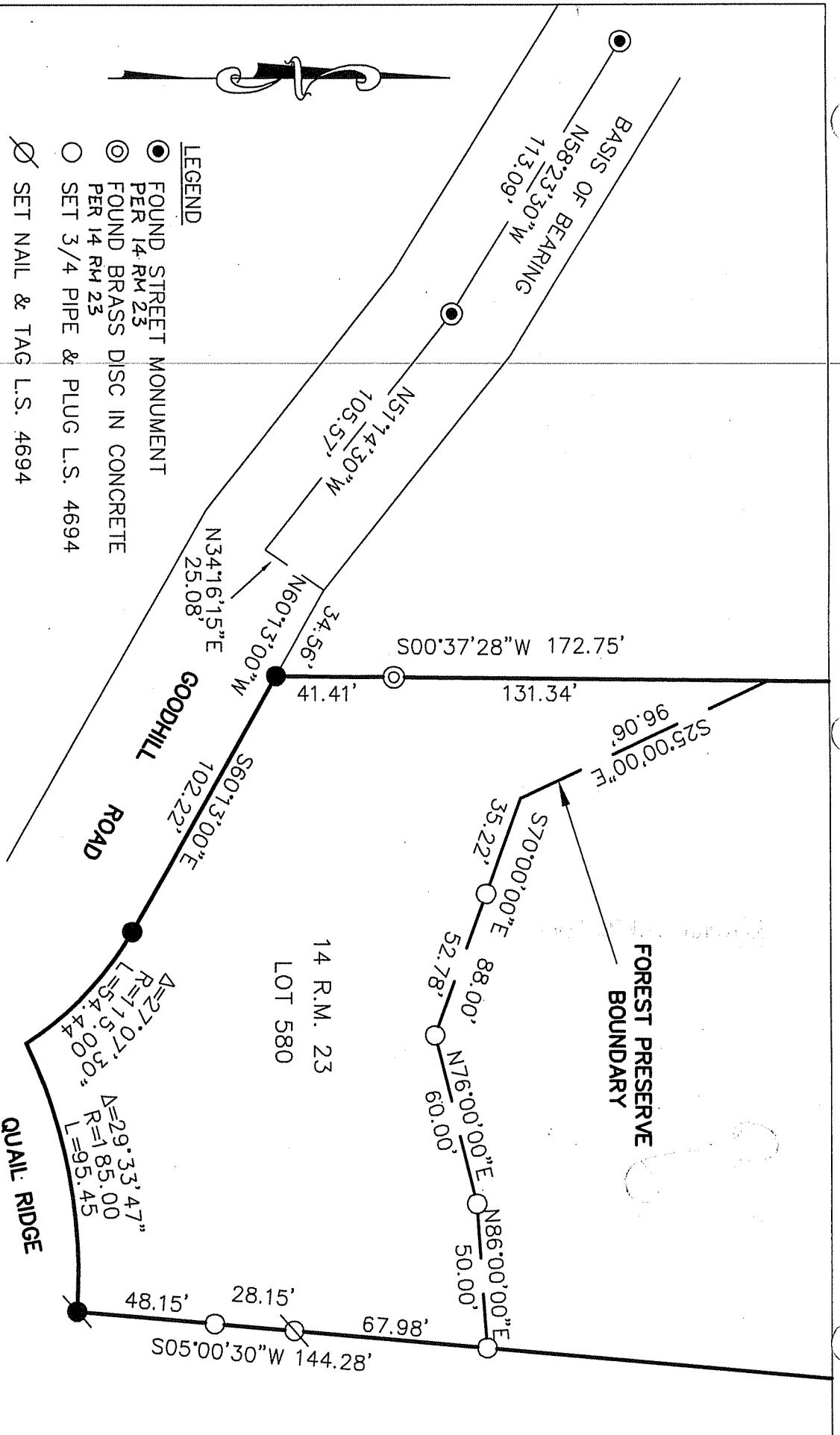




- LEGEND**
- FOUND STREET MONUMENT  
PER 14 R.M. 23
  - ⊙ FOUND BRASS DISC IN CONCRETE  
PER 14 R.M. 23
  - SET 3/4 PIPE & PLUG L.S. 4694
  - ∅ SET NAIL & TAG L.S. 4694
  - FOUND 3/4" PIPE & PLUG R.E. 10,057  
PER 14 R.M. 23
  - FOUND NAIL & TAG R.E. 10,057  
PER 14 R.M. 23

BASIS OF BEARING

BASIS OF BEARING IS N58°23'30"W BETWEEN  
FOUND STREET MONUMENTS PER 14 R.M. 23



CORNER RECORD  
LOT 580 / 14 R.M. 23  
KENTFIELD MARIN COUNTY CALIFORNIA

SCALE: 1" = 50'  
DATE: 2/10/06  
DRAWN BY:  
SHEET 2 OF 2

LAWRENCE P. DOYLE  
LAND SURVEYOR/CIVIL ENGINEER  
P.O. BOX 1609 MILL VALLEY CA 94942 (415-388-9585)

DRAWING NO.  
1455-06