



JERRICO ASSOCIATES

7121

CORNER RECORD

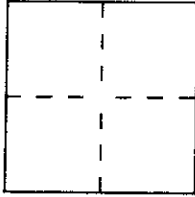
SUITE 27
77 MARK DRIVE
SAN RAFAEL, CA 94903

Document Number 74-271-02

City of Kentfield

County of Marin, California

Brief Legal Description Lot 417 Map of Kent Woodlands Sub. 12 8 RM 91



CORNER TYPE

Government Corner Control
 Meander Property
 Rancho Other
 Date of Survey Feb. 5, 1995

COORDINATES (Optional)

N. _____
 E. _____
 Zone _____ Datum _____
 Elev. _____

Corner — Left as found Found and tagged Established Reestablished Rebuilt

Identification and type of corner found: Evidence used to identify or procedure used to establish or reestablish the corner:
Found Sub. monuments on cul-de-sac at end of Goodhill Road.

A description of the physical condition of the monument as found and as set or reset:
See map on sheet 2 for detail of points found and points set.

SURVEYOR'S STATEMENT

This Corner Record was prepared by me or under my direction in conformance with
 the Land Surveyors' Act on Feb. 5 1995.

Signed [Signature] L.S. or R.C.E. Number LS 3887

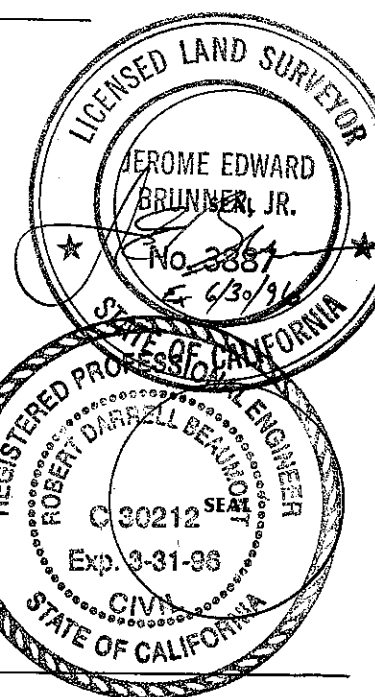
COUNTY SURVEYOR'S STATEMENT

This Corner Record was received FEBRUARY 8 1995 and examined

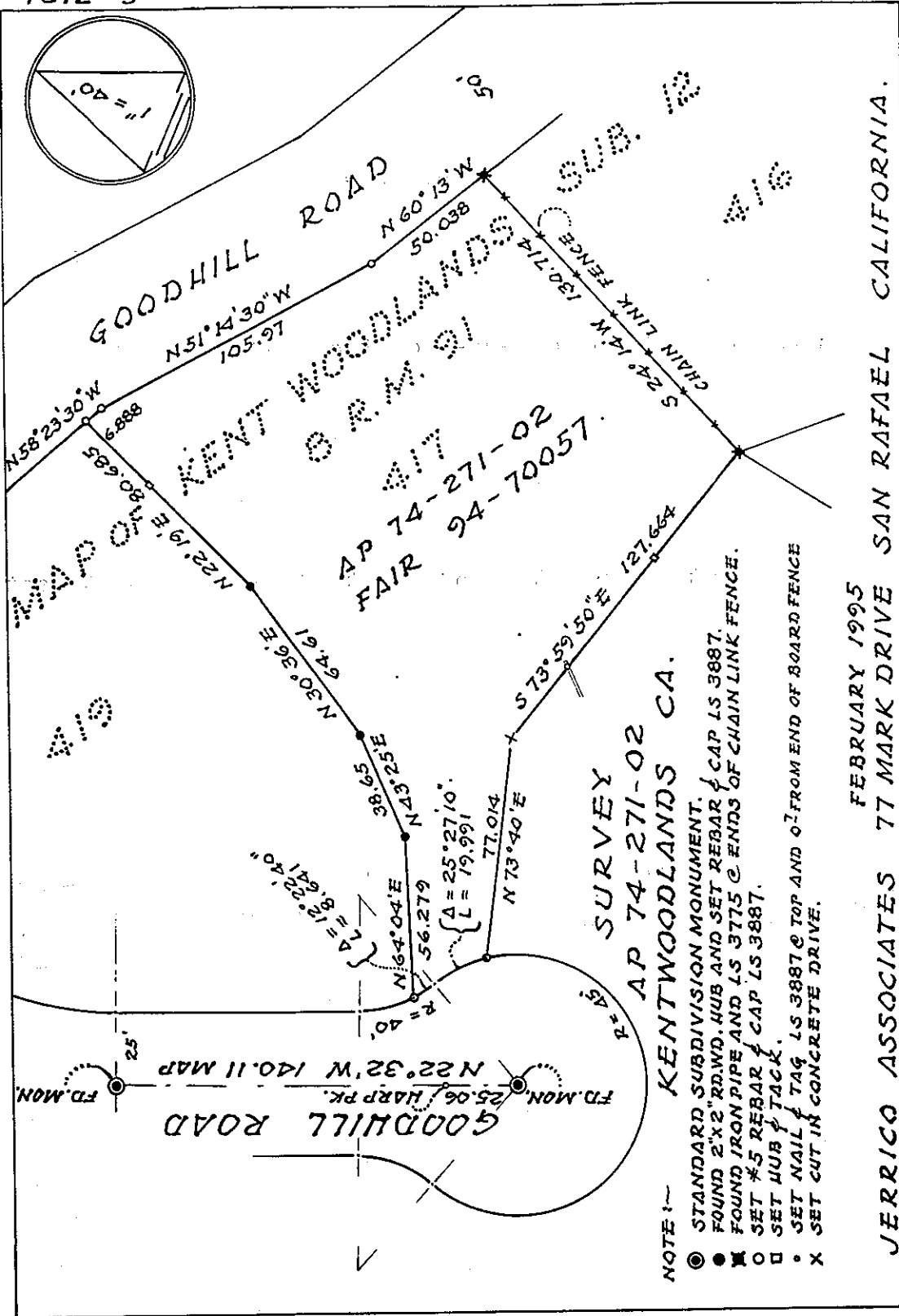
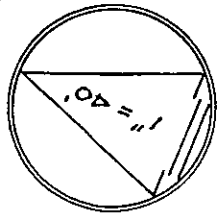
and filed 2-9 1995.

Signed [Signature] Title DES

County Surveyor's Comment _____



1617-S



AP 74-271-02
FAIR 94-70057

SURVEY
AP 74-271-02
KENTWOODLANDS CA.

- NOTE: -
- STANDARD SUBDIVISION MONUMENT.
 - FOUND 2"x2" RDWD. HUB AND SET REBAR CAP LS 3887.
 - ⊠ FOUND IRON PIPE AND LS 3775 @ ENDS OF CHAIN LINK FENCE.
 - SET #5 REBAR CAP LS 3887.
 - SET HUB & TACK.
 - SET NAIL & TAG LS 3887 @ TOP AND 0' FROM END OF BOARD FENCE
 - X SET CUT IN CONCRETE DRIVE.

JERRICO ASSOCIATES 77 MARK DRIVE SAN RAFAEL CALIFORNIA.
FEBRUARY 1995