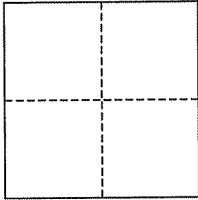


CORNER RECORD

City of Kentfield

Document Number AP# 074-262-32
County of Marin, California

Brief Legal Description Portion of Lot 257, 6 RM 23



CORNER TYPE

Government Corner Control
Meander Property
Rancho Other
Date of Survey June 25, 2008

COORDINATES (Optional)

N. _____
E. _____
Zone NAD27 NAD83
NAD83 Epoch _____
Elev. _____
Vert. Datum: NGVD29 NAVD88
Meas. Units: Metric Imperial

Corner- Left as found Found and tagged Established Reestablished Rebuilt

Identification and type of corner found: Evidence used to identify or procedure used to establish or reestablish the corner:
Found IP & Plug (LS 5814) at the most Westerly corner and IP & Plug (RCE 30465) at the most Southerly corner per 2008 RS 12.

A description of the physical condition of the monument as found and as set or reset: Property line pts set along the Northerly line of Goodhill Rd. per 2008 RS 12, as shown and noted.

SURVEYOR'S STATEMENT

This corner Record was prepared by me or under my direction in conformance with the Land Surveyor's Act on 8/28/08
Signed Jay Hallberg P.L.S. or R.C.E. No. 30465

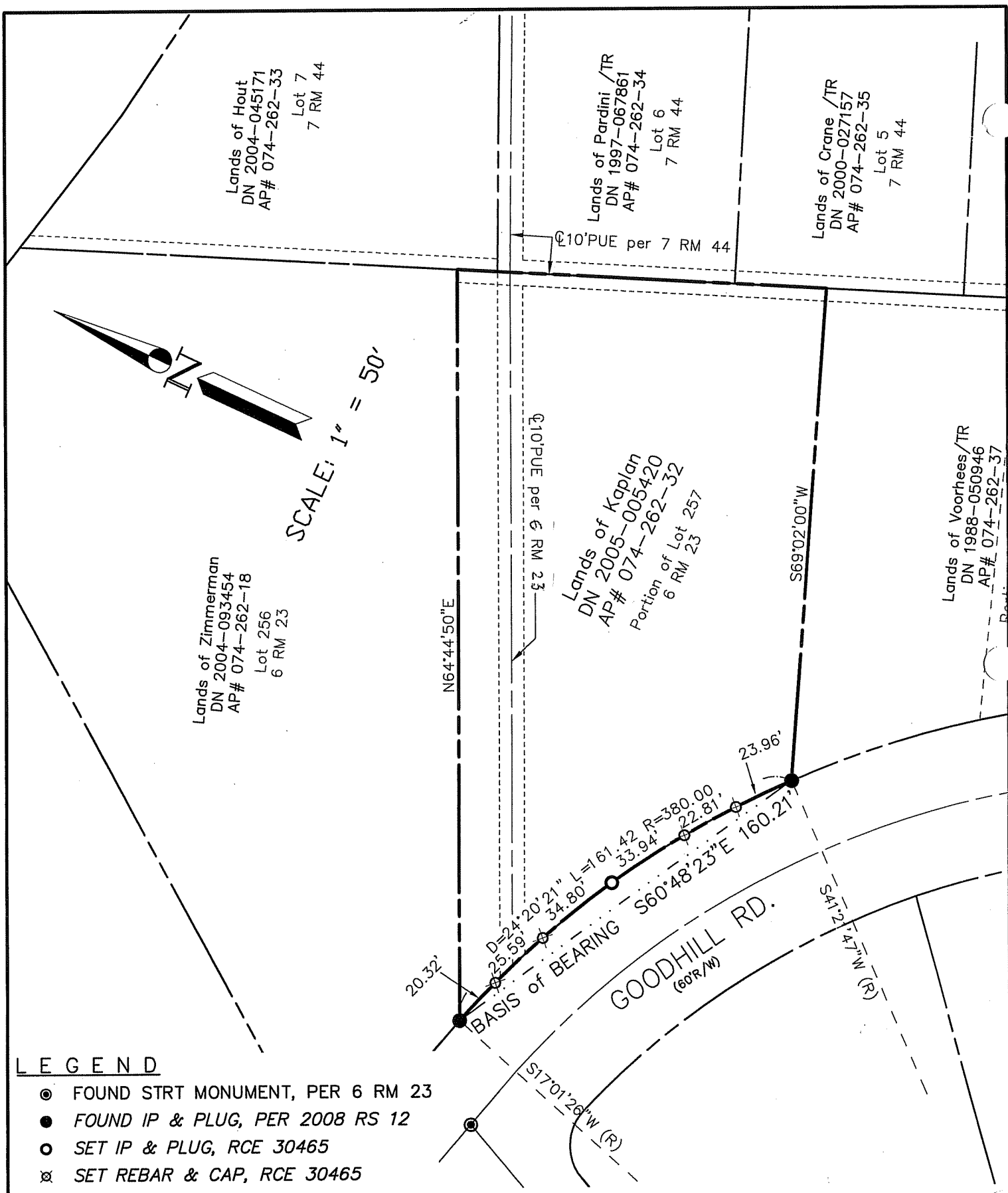


COUNTY SURVEYOR'S STATEMENT

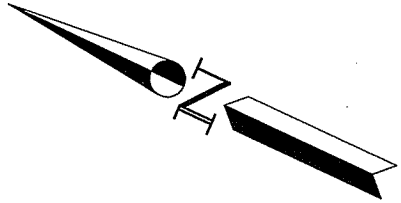
This Corner Record was received 6-27-2008
and examined and filed 9-4-2008
Signed [Signature] P.L.S. or R.C.E. No. 7128
Title COUNTY SURVEYOR



County Surveyor's Comment _____



SCALE: 1" = 50'



LEGEND

- FOUND STRT MONUMENT, PER 6 RM 23
- FOUND IP & PLUG, PER 2008 RS 12
- SET IP & PLUG, RCE 30465
- ⊗ SET REBAR & CAP, RCE 30465

Note: All distances are in feet and decimals thereof.

SHEET	1	OF	1
SCALE:	1" = 50'	DESIGN:	PR
DATE:	Jun. 2008	DRAWN:	PR
FILE:	2005-151	CHECKED:	J.L.H

J.L. ENGINEERING
 CIVIL ENGINEERS—LAND SURVEYORS
 1539 4th ST., SAN RAFAEL, CA. 94901 (415) 457-6647

Corner Record
 Lands of Kaplan — 112 Goodhill Rd., Kentfield
 APN 074-262-32, Kentfield, Marin County, CA