

CORNER RECORD

Document Number A.P.# 074-261-04

City of KENTFIELD

County of MARIN, California

Brief Legal Description LOT 248 6 R.M. 23

CORNER TYPE

Government Corner Control
 Meander Property
 Rancho Other
 Date of Survey 7/3/02

COORDINATES (Optional)

N. _____
 E. _____
 Zone _____ NAD27 NAD83
 NAD83 Epoch _____
 Elev _____
 Vert. Datum: NGVD29 NAVD88
 Meas. Units: Metric Imperial

Corner- Left as found Found and tagged Established Reestablished Rebuilt

Identification and type of corner found: Evidence used to identify or procedure used to establish or reestablish the corner:

1. ESTABLISHED CORNER ON VINEYARD WAY FROM STREET MONUMENTS AS SHOWN ON 6 R.M. 23.
2. FOUND 3/4" PIPE & WOODEN PLUG SET NAIL & TAG L.S. 4694.

A description of the physical condition of the monument as found and as set or reset: SEE SHEET 2.

SURVEYOR'S STATEMENT

This Corner Record was prepared by me or under my direction in conformance with

the Land Surveyor's Act on JULY 3 2002

Signed Lawrence P. Doyle P.L.S. or R.C.E. No. P.L.S. 4694



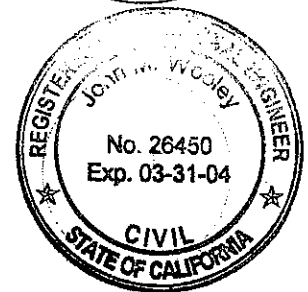
COUNTY SURVEYOR'S STATEMENT

This Corner Record was received JULY 15, 2002

and examined and filed JULY 24, 2002

Signed John M. Wooley P.L.S. or R.C.E. No. 26450

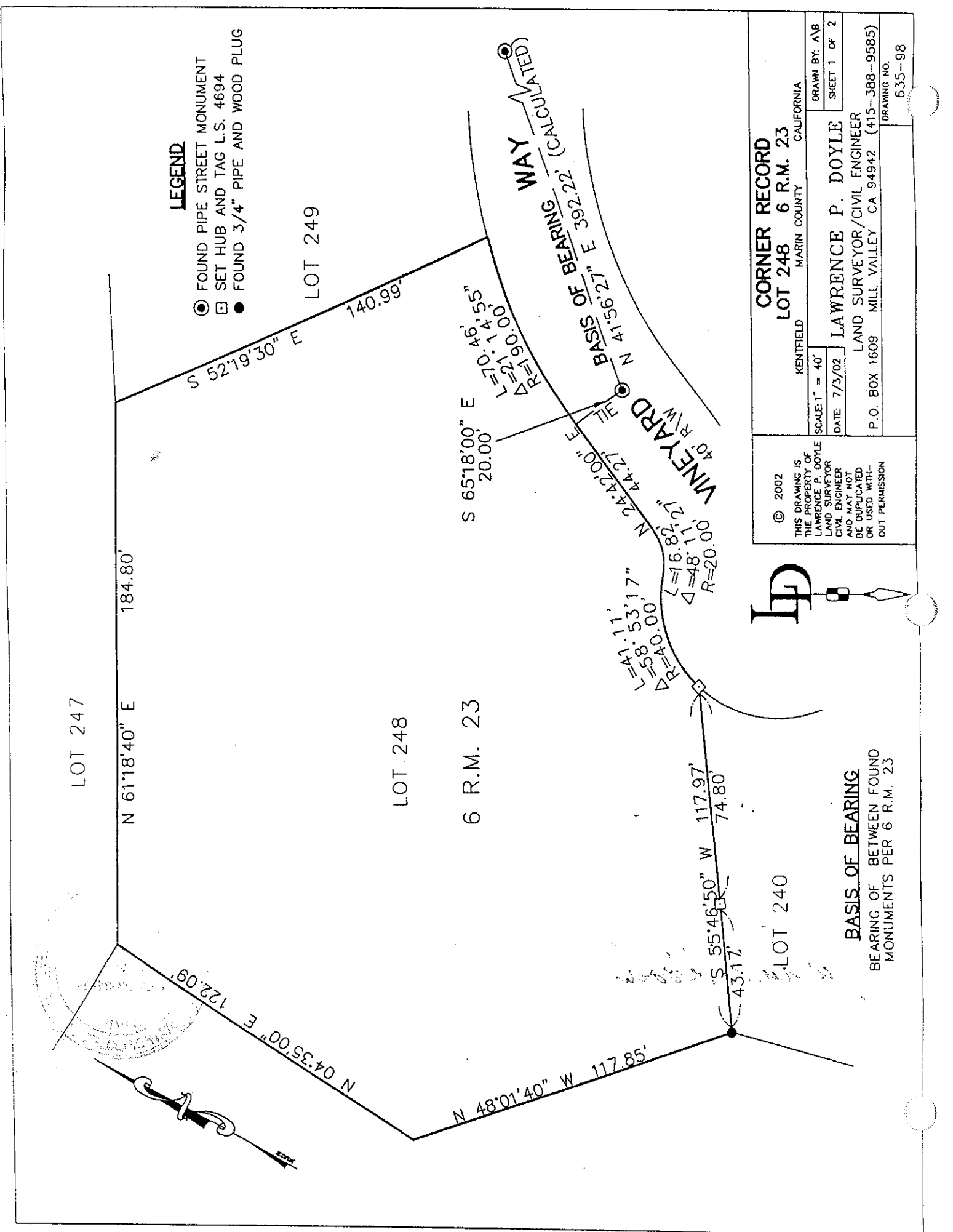
Title DEPUTY



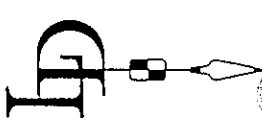
County Surveyor's Comment _____

LEGEND

- FOUND PIPE STREET MONUMENT
- SET HUB AND TAG L.S. 4694
- FOUND 3/4" PIPE AND WOOD PLUG



© 2002
 THIS DRAWING IS
 THE PROPERTY OF
 LAWRENCE P. DOYLE
 LAND SURVEYOR
 CIVIL ENGINEER
 AND MAY NOT
 BE DUPLICATED
 OR USED WITH-
 OUT PERMISSION



BASIS OF BEARING
 BEARING OF BETWEEN FOUND
 MONUMENTS PER 6 R.M. 23

CORNER RECORD
 LOT 248 6 R.M. 23
 KENTFIELD MARIN COUNTY CALIFORNIA

SCALE: 1" = 40'
 DATE: 7/3/02
 DRAWN BY: AVB
 SHEET 1 OF 2
 LAWRENCE P. DOYLE
 LAND SURVEYOR/CIVIL ENGINEER
 P.O. BOX 1609 MILL VALLEY CA 94942 (415-388-9585)
 DRAWING NO. 635-98