

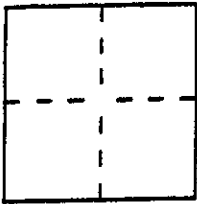
CORNER RECORD

Document Number APN 74-211-13

City of KENTFIELD

County of MARIN, California

Brief Legal Description LOTS 103 & 110 "MAP OF KENTWOODLANDS SUB. 3 & 4, MARIN COUNTY, CA."
BK 5 Pg. 86 & BK 6 Pg. 2 also 37 NORTH RIDGEWOOD RD., KENTFIELD



CORNER TYPE

Government Corner Control
Meander Property
Rancho Other
Date of Survey 10/24/97

COORDINATES (Optional)

N. _____
E. _____
Zone _____ Datum _____
Elev. _____

Corner — Left as found Found and tagged Established Reestablished Rebuilt

Identification and type of corner found: Evidence used to identify or procedure used to establish or reestablish the corner:
FD. CORNERS AS NOTED (UNDISTURBED) BY FIELD SURVEY AND CONFIRMED
LOCATIONS AS SHOWN ON 24 O.S. 97. SET CORNERS PER RECORD.

A description of the physical condition of the monument as found and as set or reset:
FD. 1/2" IRON PINS WITH CAP "LS4402" AS INDICATED.
SET 1/2" IRON PINS WITH CAP "LS6234" AS INDICATED.

SURVEYOR'S STATEMENT

This Corner Record was prepared by me or under my direction in conformance with the Land Surveyors' Act on OCTOBER 27 19 97.

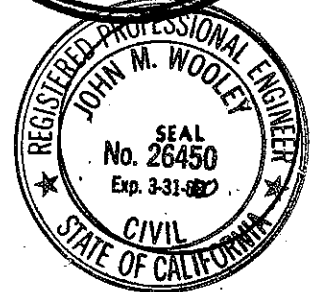
Signed [Signature] L.S. or R.C.E. Number LS 6234



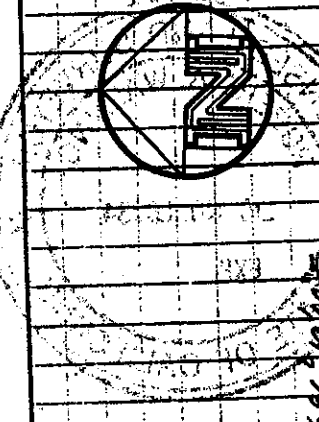
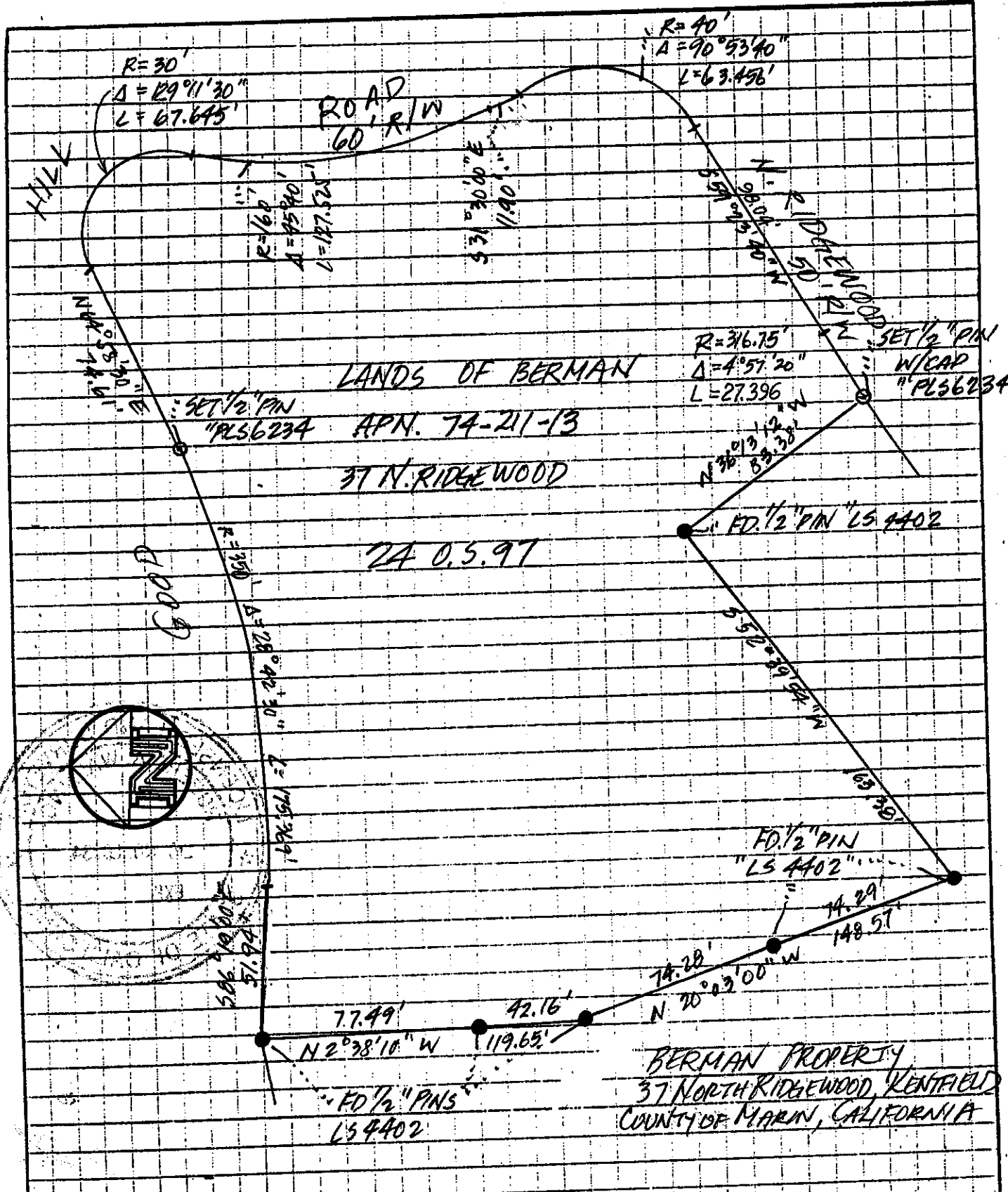
COUNTY SURVEYOR'S STATEMENT

This Corner Record was received OCTOBER 31 19 97 and examined and filed NOVEMBER 3 19 97.

Signed [Signature] Title DEPUTY



County Surveyor's Comment _____



BERMAN PROPERTY
 37 NORTH RIDGEWOOD, KENTFIELD
 COUNTY OF MARIN, CALIFORNIA

OCT. 24, 1997
 SCALE 1" = 50'
 JIN. 97-60



BOB WALLING TECHNICAL SERVICES
 P.O. Box 1346 • Glen Ellen, CA 95442
 (707) 938-1593 (415) 382-1593