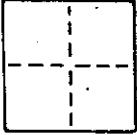


CORNER RECORD

COUNTY OF MARIN T. _____ R. _____ MERIDIAN _____ CALIFORNIA
CORNER TYPE: GOVT. CORNER MEANDER RANCHO CONTROL OTHER
CORNER IDENTIFICATION — DATE OF VISIT _____ 19____



CORNER — LEFT AS FOUND FOUND AND TAGGED REESTABLISHED OBLITERATED CORNER REBUILT

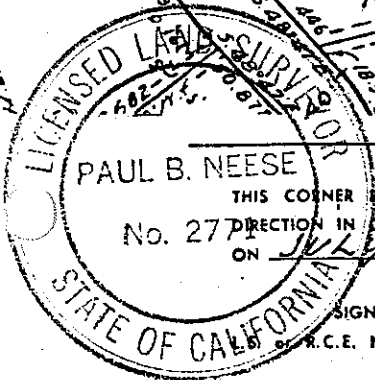
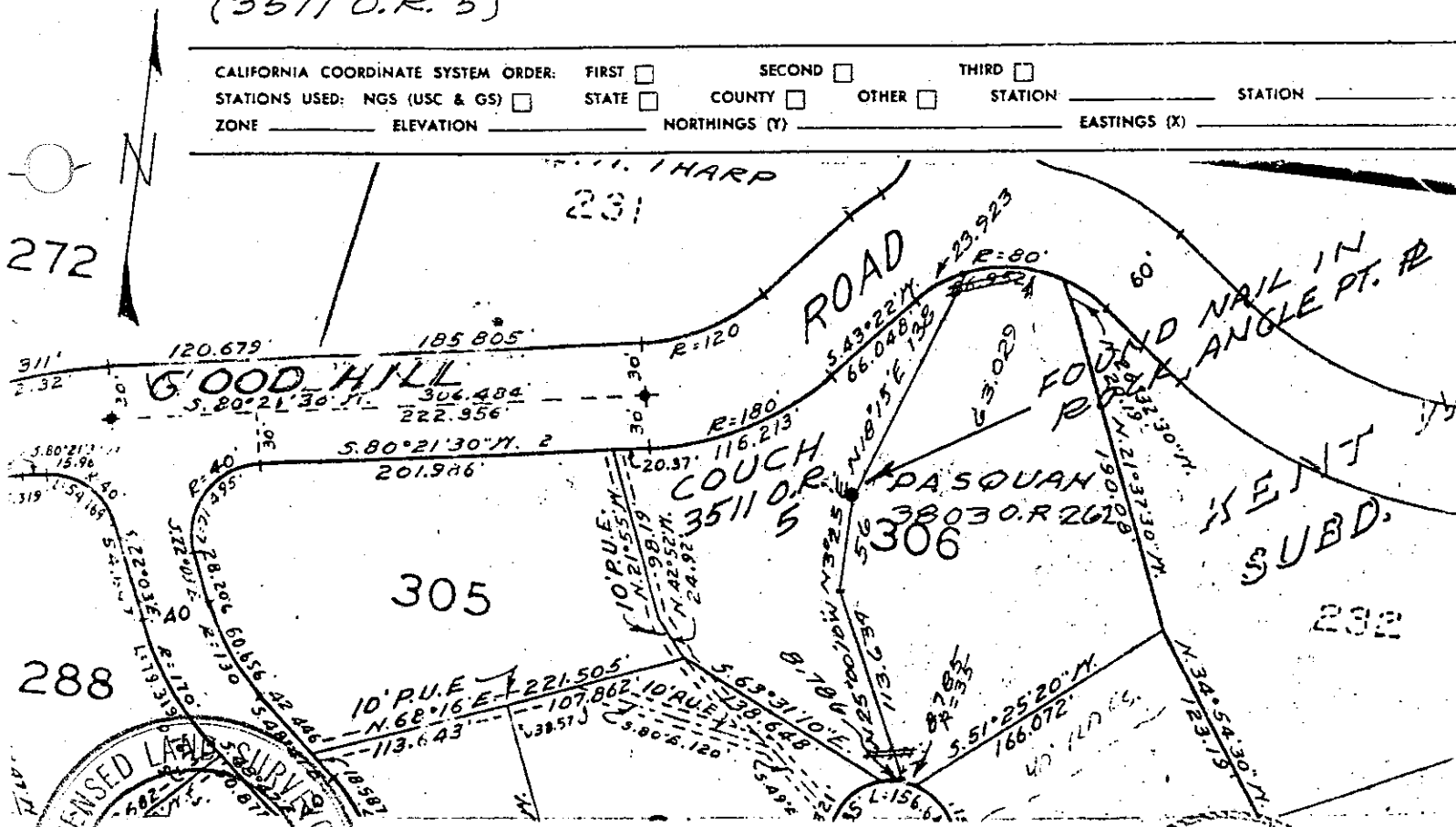
PHYSICAL DESCRIPTION OF CORNER FOUND; EVIDENCE AND METHOD USED TO IDENTIFY OR REESTABLISH

SEE SKETCH BELOW

PHYSICAL DESCRIPTION OF MONUMENTS REBUILT OR PERPETUATED

FOUND NAIL WITH PLASTIC RIBBON DRIVEN
IN ROCK AT THE ANGLE POINT ON EASTERLY
LINE OF ASSESSORS PARCEL 74-201-14
(3511 O.R. 5)

CALIFORNIA COORDINATE SYSTEM ORDER: FIRST SECOND THIRD
STATIONS USED: NGS (USC & GS) STATE COUNTY OTHER STATION _____
ZONE _____ ELEVATION _____ NORTHINGS (Y) _____ EASTINGS (X) _____



SURVEYOR'S CERTIFICATE

THIS CORNER RECORD WAS PREPARED BY ME OR UNDER MY
No. 277 DIRECTION IN CONFORMANCE WITH THE LAND SURVEYORS ACT
ON JULY 17 1991

SIGNED: Paul B. Neese
L.S. No. L.S. 2771

COUNTY SURVEYOR'S CERTIFICATE

THE CORNER RECORD WAS RECEIVED 8/21/91
AND EXAMINED AND FILED 8/21/91

BY: _____
TITLE: _____

DOCUMENT No. _____

STATEMENT ON BACK OF SHEET

SEAL

NO

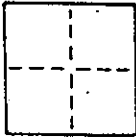
CORNER RECORD

2 of 3

COUNTY OF MARIN T. _____ R. _____ MERIDIAN _____ CALIFORNIA

CORNER TYPE: GOVT. CORNER MEANDER RANCHO CONTROL OTHER

CORNER IDENTIFICATION — DATE OF VISIT _____ 19__



CORNER — LEFT AS FOUND FOUND AND TAGGED REESTABLISHED OBLITERATED CORNER REBUILT

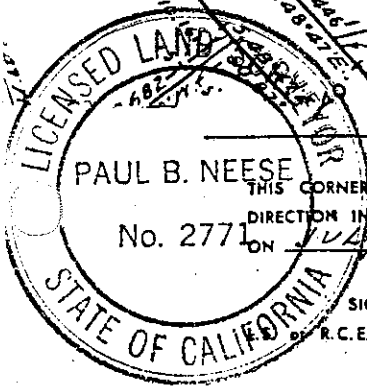
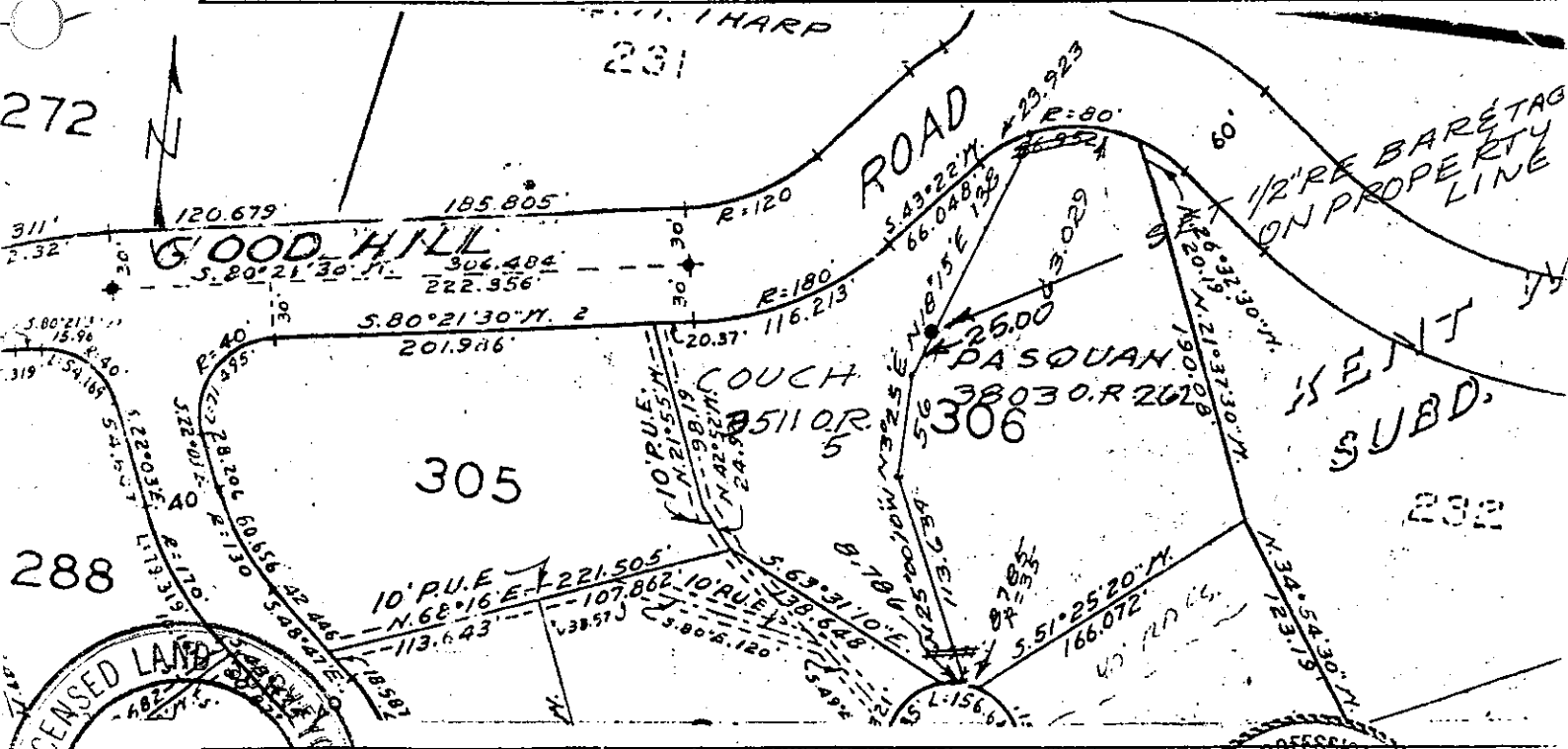
PHYSICAL DESCRIPTION OF CORNER FOUND; EVIDENCE AND METHOD USED TO IDENTIFY OR REESTABLISH

SEE SKETCH BELOW

PHYSICAL DESCRIPTION OF MONUMENTS REBUILT OR PERPETUATED

SET 1/2" RE BAR WITH PLASTIC CAP STAMPED L.S. 2771. ON EASTERLY LINE OF ASSESSORS PARCEL 74-201-14 (3511 O.R. 5)

CALIFORNIA COORDINATE SYSTEM ORDER: FIRST SECOND THIRD
 STATIONS USED: NGS (USC & GS) STATE COUNTY OTHER STATION _____ STATION _____
 ZONE _____ ELEVATION _____ NORTHINGS (Y) _____ EASTINGS (X) _____



SURVEYOR'S CERTIFICATE
 THIS CORNER RECORD WAS PREPARED BY ME OR UNDER MY DIRECTION IN CONFORMANCE WITH THE LAND SURVEYORS ACT ON JULY 17 1991
 SIGNED Paul B. Neese
 OF R.C.E. No. L.S. 2771

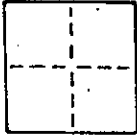
COUNTY SURVEYOR'S CERTIFICATE
 THE CORNER RECORD WAS REVIEWED AND EXAMINED AND FILED _____ 1991
 BY: _____
 TITLE: _____
 DOCUMENT No. _____
 STATEMENT ON BACK OF SHEET _____ YES NO

SEAL

CORNER RECORD

3 of 3

COUNTY OF MARIN T. _____ R. _____ MERIDIAN _____ CALIFORNIA
 CORNER TYPE: GOVT. CORNER MEANDER RANCHO CONTROL OTHER
 CORNER IDENTIFICATION — DATE OF VISIT _____ 19____



CORNER — LEFT AS FOUND FOUND AND TAGGED REESTABLISHED OBLITERATED CORNER REBUILT

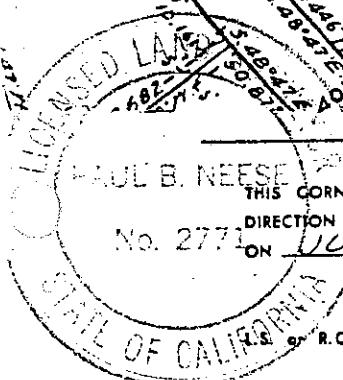
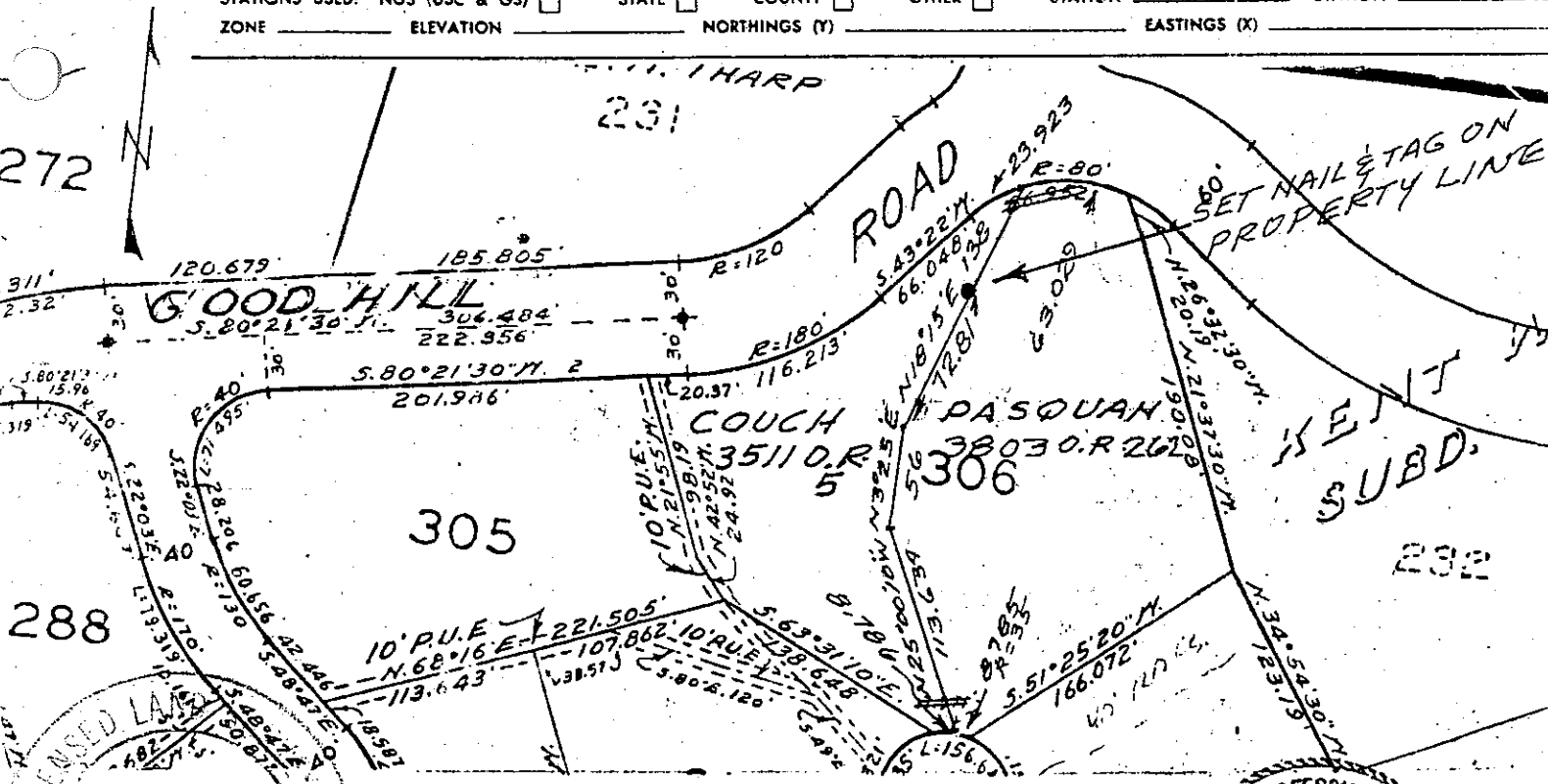
PHYSICAL DESCRIPTION OF CORNER FOUND; EVIDENCE AND METHOD USED TO IDENTIFY OR REESTABLISH

SEE SKETCH BELOW

PHYSICAL DESCRIPTION OF MONUMENTS REBUILT OR PERPETUATED

*SET NAIL & L.S. 2771 TAG IN DRIVEWAY, ON
 EASTERLY LINE OF ASSESSORS PARCEL
 74-201-14 (3511 O.R. 5)*

CALIFORNIA COORDINATE SYSTEM ORDER: FIRST SECOND THIRD
 STATIONS USED: NGS (USC & GS) STATE COUNTY OTHER STATION _____ STATION _____
 ZONE _____ ELEVATION _____ NORTHINGS (Y) _____ EASTINGS (X) _____



SURVEYOR'S CERTIFICATE

THIS CORNER RECORD WAS PREPARED BY ME OR UNDER MY DIRECTION IN CONFORMANCE WITH THE LAND SURVEYORS ACT ON JULY 17 1991

SIGNED: Paul B. Neese
 L.S. or R.C.E. No.: L.S. 2771

SEAL

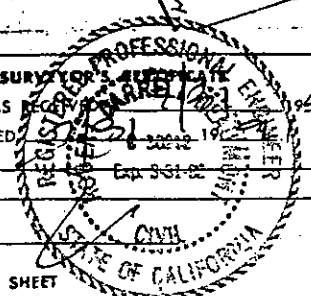
COUNTY SURVEYOR'S CERTIFICATE

THE CORNER RECORD WAS RECEIVED BY ME AND EXAMINED AND FILED

BY: _____
 TITLE: _____

DOCUMENT No. _____

STATEMENT ON BACK OF SHEET



YES NO