

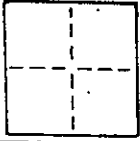
CORNER RECORD

1 of 4

COUNTY OF MARIN T. _____ R. _____ MERIDIAN _____ CALIFORNIA

CORNER TYPE: GOVT. CORNER MEANDER RANCHO CONTROL OTHER

CORNER IDENTIFICATION — DATE OF VISIT NOV 21 1989



CORNER — LEFT AS FOUND FOUND AND TAGGED REESTABLISHED OBLITERATED CORNER REBUILT

PHYSICAL DESCRIPTION OF CORNER FOUND; EVIDENCE AND METHOD USED TO IDENTIFY OR REESTABLISH
 SET 1/2" REBAR WITH L.S. 2771 PLASTIC CAP.
 COORDINATES FROM MONUMENT ON GOODHILL RD.
 KENTWOODLANDS SUB. EIGHT, 6 R.M. 36

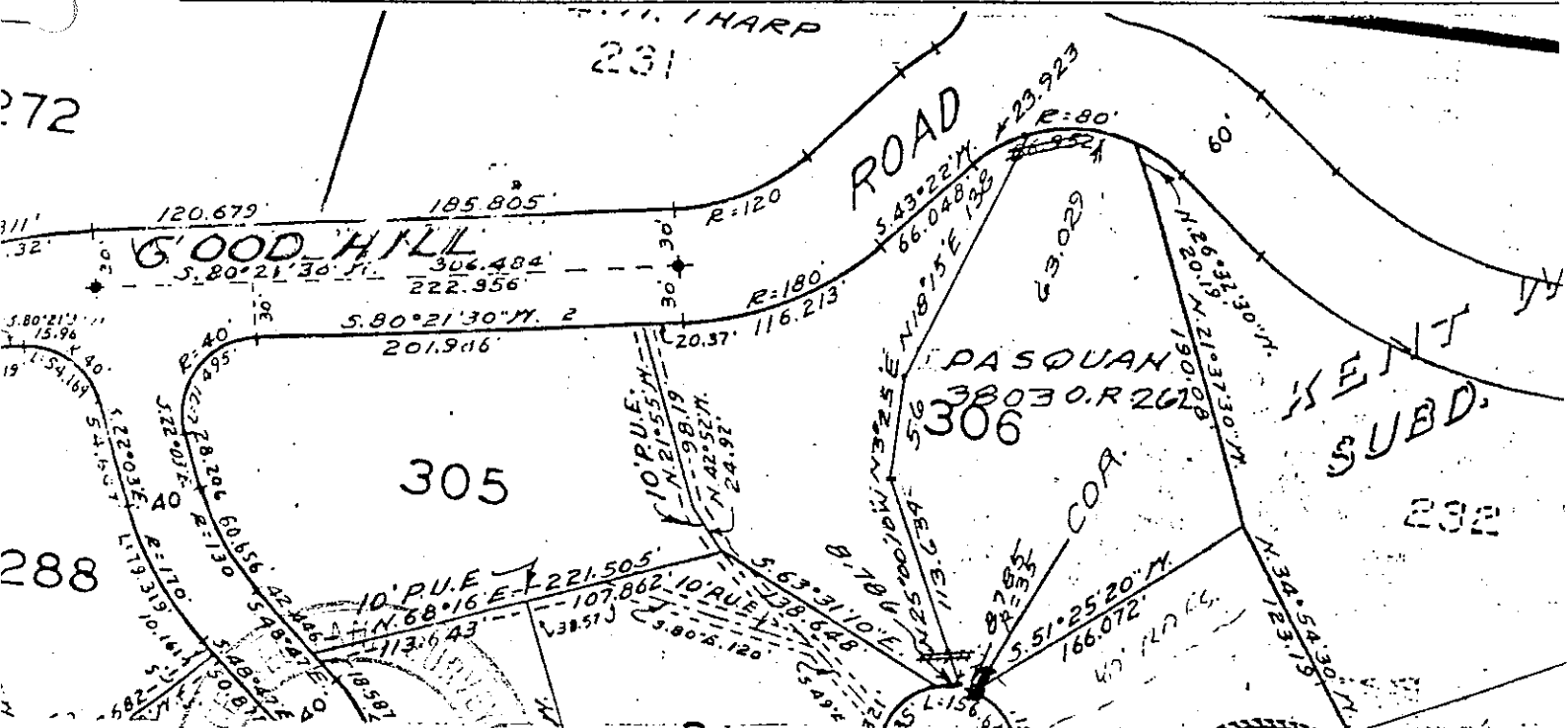
PHYSICAL DESCRIPTION OF MONUMENTS REBUILT OR PERPETUATED

AS SHOWN
 A.P. 74-201-13

CALIFORNIA COORDINATE SYSTEM ORDER: FIRST SECOND THIRD

STATIONS USED: NGS (USC & GS) STATE COUNTY OTHER STATION _____ STATION _____

ZONE _____ ELEVATION _____ NORTHINGS (Y) _____ EASTINGS (X) _____



PAUL B. NEER SURVEYOR'S CERTIFICATE

THIS CORNER RECORD WAS PREPARED BY ME OR UNDER MY DIRECTION IN CONFORMANCE WITH THE LAND SURVEYORS ACT ON NOV. 21 1989

SIGNED Paul B. Neer

L.S. No. 45,277 R.C.E. No. 45,277

LICENSE EXPIRES 6-30-92

SEAL

COUNTY SURVEYOR'S CERTIFICATE

THE CORNER RECORD WAS RECEIVED AND EXAMINED AND FILED BY [Signature] ENGINEER

TITLE: [Signature]

DOCUMENT No. _____

STATEMENT ON BACK OF SHEET OF CALIFORNIA YES NO

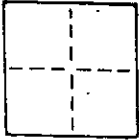
CORNER RECORD

2044

COUNTY OF MARIN T. _____ R. _____ MERIDIAN _____ CALIFORNIA

CORNER TYPE: GOV'T. CORNER MEANDER RANCHO CONTROL OTHER

CORNER IDENTIFICATION — DATE OF VISIT NOV 21 1989



CORNER — LEFT AS FOUND FOUND AND TAGGED REESTABLISHED OBLITERATED CORNER REBUILT

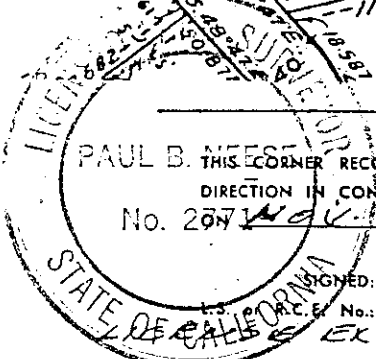
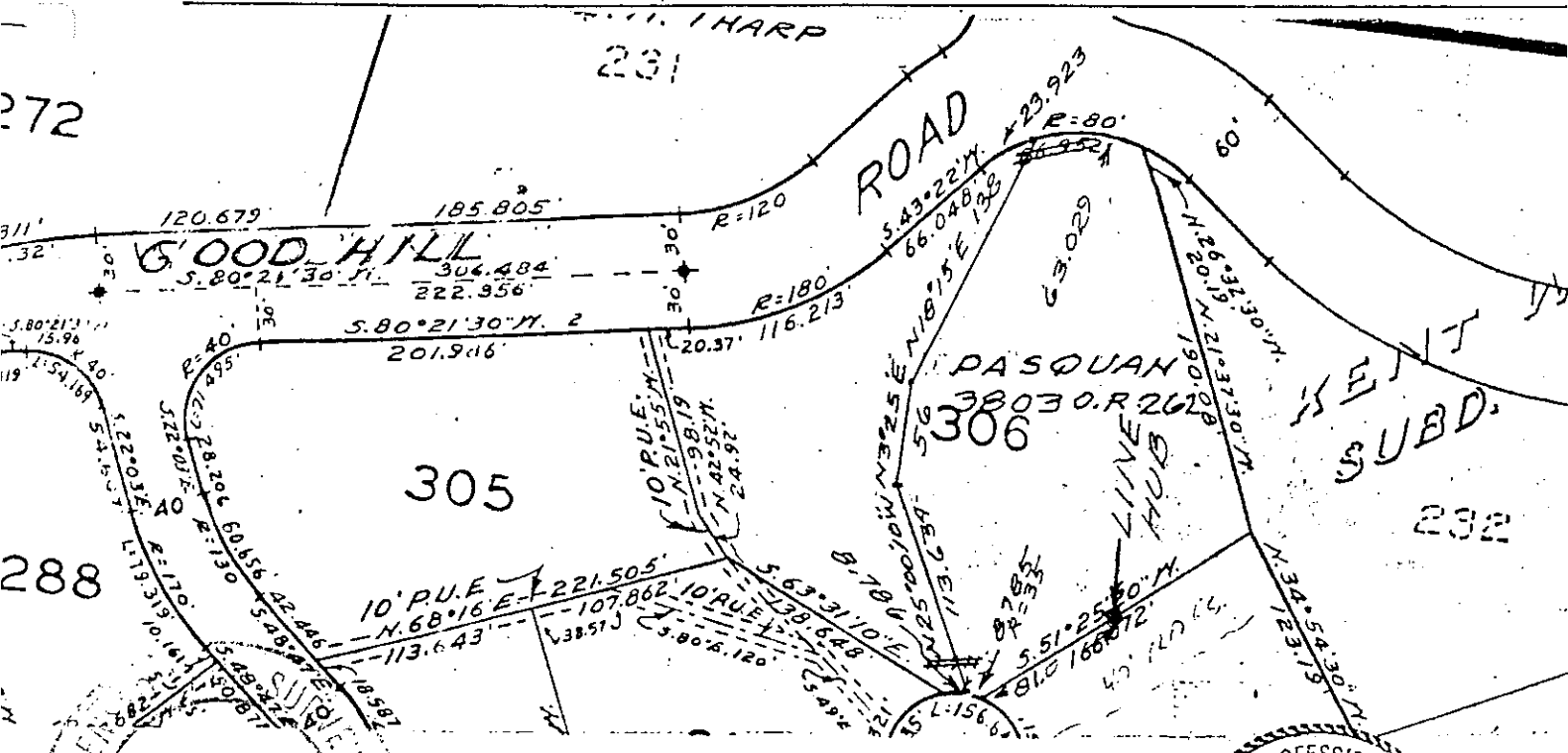
PHYSICAL DESCRIPTION OF CORNER FOUND; EVIDENCE AND METHOD USED TO IDENTIFY OR REESTABLISH

SET HUB & L.S. 2771 TAG IN ROAD BANK (R LINE)
 COORDINATES FROM MONUMENT ON GOOD HILL RD.
 KENTWOODLANDS SUB. EIGHT, G.R.M. 36

PHYSICAL DESCRIPTION OF MONUMENTS REBUILT OR PERPETUATED

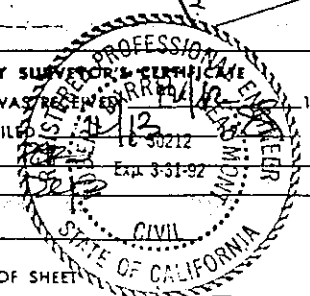
AS SHOWN
 A.P. 74-201-13

CALIFORNIA COORDINATE SYSTEM ORDER: FIRST SECOND THIRD
 STATIONS USED: NGS (USC & GS) STATE COUNTY OTHER STATION _____ STATION _____
 ZONE _____ ELEVATION _____ NORTHINGS (Y) _____ EASTINGS (X) _____



SURVEYOR'S CERTIFICATE
 PAUL B. NEESE THIS CORNER RECORD WAS PREPARED BY ME OR UNDER MY
 DIRECTION IN CONFORMANCE WITH THE LAND SURVEYORS ACT
 No. 207 NOV 21 1989
 SIGNED: Paul B. Neese
 No. 25 2771
 EXPIRES 6-30-92

COUNTY SURVEYOR'S CERTIFICATE
 THE CORNER RECORD WAS REVIEWED AND EXAMINED AND FILED
 BY: _____
 TITLE: _____
 DOCUMENT No. _____
 STATEMENT ON BACK OF SHEET _____



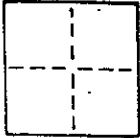
SEAL

NO

CORNER RECORD

3 OF 4

COUNTY OF MARIN T. _____ R. _____ MERIDIAN _____ CALIFORNIA
 CORNER TYPE: GOVT. CORNER MEANDER RANCHO CONTROL OTHER
 CORNER IDENTIFICATION — DATE OF VISIT NOV 21 1989



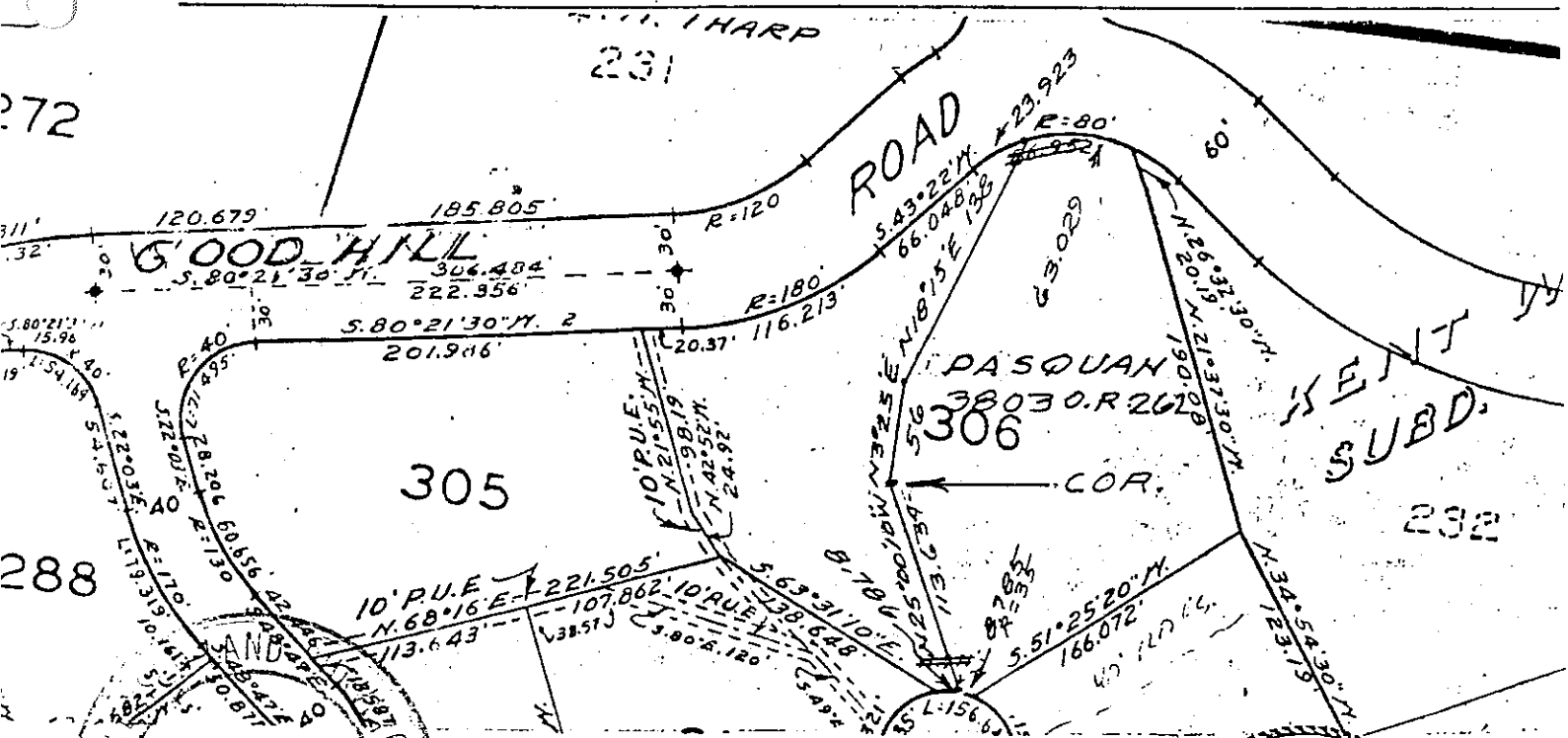
CORNER — LEFT AS FOUND FOUND AND TAGGED REESTABLISHED OBLITERATED CORNER REBUILT

PHYSICAL DESCRIPTION OF CORNER FOUND; EVIDENCE AND METHOD USED TO IDENTIFY OR REESTABLISH
FOUND OLD HUB WITH TACK, 1/2" REBAR GUARD.
COORDINATES FROM MONUMENTS ON GOODHILL ROAD
KENTWOODLANDS SUB. EIGHT. G.R.M.-36

PHYSICAL DESCRIPTION OF MONUMENTS REBUILT OR PERPETUATED

AS SHOWN
A.P. 74-201-13

CALIFORNIA COORDINATE SYSTEM ORDER: FIRST SECOND THIRD
 STATIONS USED: NGS (USC & GS) STATE COUNTY OTHER STATION _____ STATION _____
 ZONE _____ ELEVATION _____ NORTHINGS (Y) _____ EASTINGS (X) _____



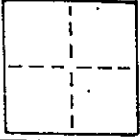
PAUL B. NEESE SURVEYOR'S CERTIFICATE
 THIS CORNER RECORD WAS PREPARED BY ME OR UNDER MY
 NO DIRECTION IN CONFORMANCE WITH THE LAND SURVEYORS ACT
 ON NOV 21 1989
 SIGNED: Paul B. Neese
 A.C.E. No.: L.S. 2771
 LICENSE EXPIRES 6-30-92

COUNTY SURVEYOR'S CERTIFICATE
 THE CORNER RECORD WAS RECEIVED BY ME AND EXAMINED AND FILED
 BY: [Signature] 630212
 TITLE: _____ Exp. 3-31-92
 DOCUMENT No. _____
 STATEMENT ON BACK OF SHEET YES NO

CORNER RECORD

404

COUNTY OF MARIN T. _____ R. _____ MERIDIAN _____ CALIFORNIA
 CORNER TYPE: GOVT. CORNER MEANDER RANCHO CONTROL OTHER
 CORNER IDENTIFICATION — DATE OF VISIT NOV. 21 19 89



CORNER — LEFT AS FOUND FOUND AND TAGGED REESTABLISHED OBLITERATED CORNER REBUILT

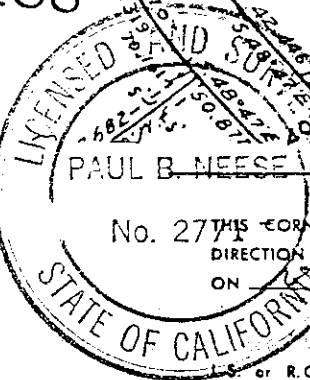
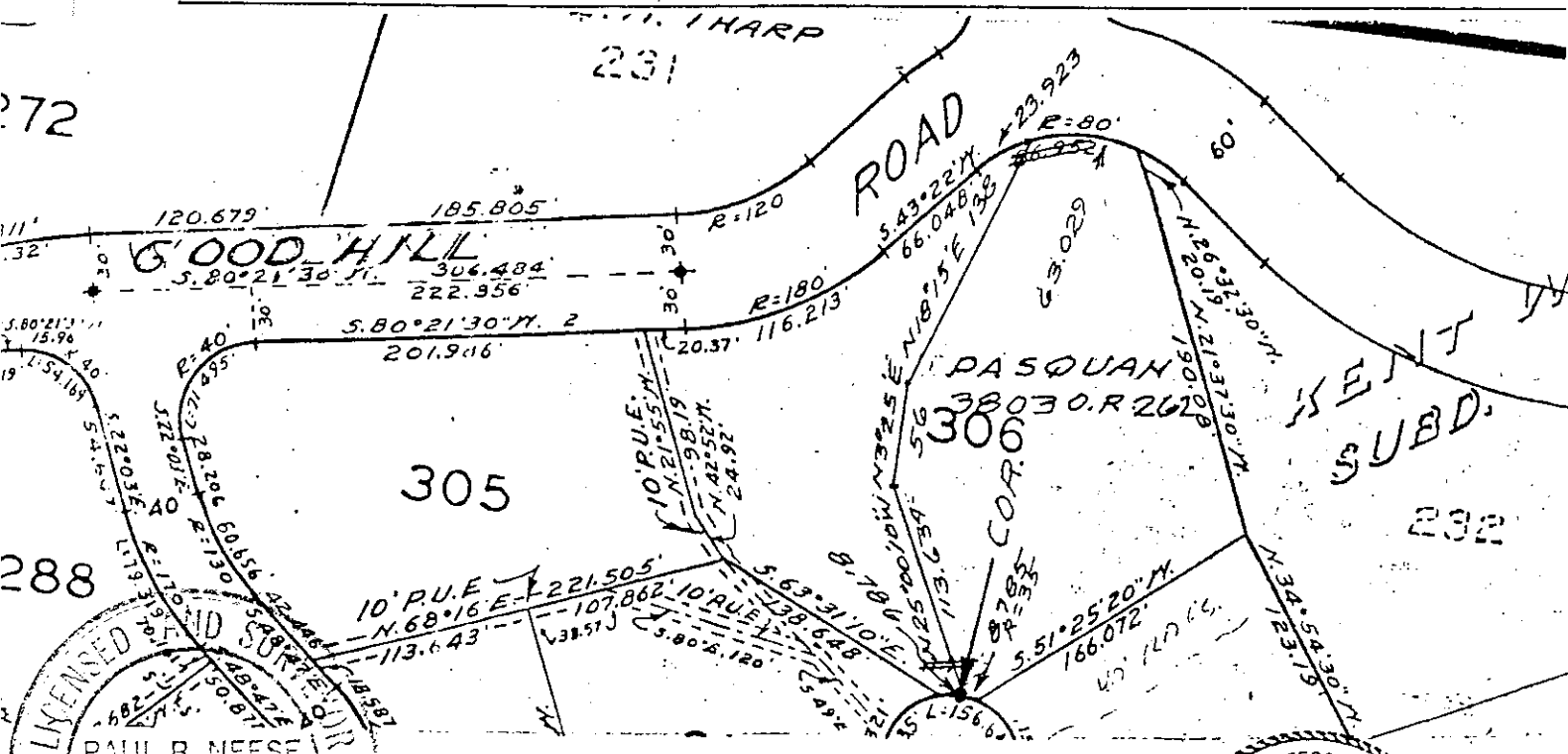
PHYSICAL DESCRIPTION OF CORNER FOUND; EVIDENCE AND METHOD USED TO IDENTIFY OR REESTABLISH

SET 1/2" REBAR WITH L.S. 2771 PLASTIC CAP
COORDINATES FROM MONUMENT ON GOODHILL RD,
KENTWOODLANDS SUB. EIGHT 6 R.M. 36

PHYSICAL DESCRIPTION OF MONUMENTS REBUILT OR PERPETUATED

AS SHOWN
A.P. 74-201-13

CALIFORNIA COORDINATE SYSTEM ORDER: FIRST SECOND THIRD
 STATIONS USED: NGS (USC & GS) STATE COUNTY OTHER STATION _____ STATION _____
 ZONE _____ ELEVATION _____ NORTHINGS (Y) _____ EASTINGS (X) _____



SURVEYOR'S CERTIFICATE

No. 27 THIS CORNER RECORD WAS PREPARED BY ME OR UNDER MY DIRECTION IN CONFORMANCE WITH THE LAND SURVEYORS ACT ON NOV 21 19 89

SIGNED: Paul B. Neese

L.S. or R.C.E. No.: L.S. 2771

LICENSE EXPIRES 6-30-92

SEAL

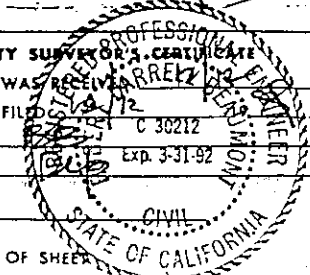
COUNTY SURVEYOR'S CERTIFICATE

THE CORNER RECORD WAS RECEIVED BY ME AND EXAMINED AND FILED NOV 22 19 89

BY: [Signature] C 36212
 TITLE: [Signature] Exp. 3-31-92

DOCUMENT No. _____

STATEMENT ON BACK OF SHEET



NO