

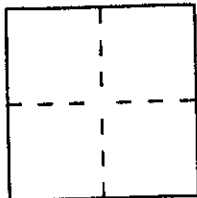
CORNER RECORD

Document Number APN 74-192-18

City of KENTFIELD

County of MARIN, California

Brief Legal Description LOT 303, 6 R.M. 36, 531 Woodlang Road, APN 74-192-18



CORNER TYPE

Government Corner Control
 Meander Property
 Rancho Other
 Date of Survey _____

COORDINATES (Optional)

N. _____
 E. _____
 Zone _____ Datum _____
 Elev. _____

Corner — Left as found Found and tagged Established Reestablished Rebuilt

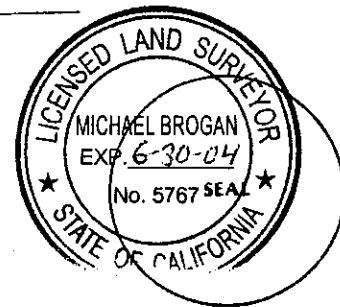
Identification and type of corner found: Evidence used to identify or procedure used to establish or reestablish the corner:
See Sketch on back

A description of the physical condition of the monument as found and as set or reset:
See Sketch on back

SURVEYOR'S STATEMENT

This Corner Record was prepared by me or under my direction in conformance with the Land Surveyors' Act on November 12, 2002

Signed Michael A. Brogan L.S. or R.C.E. Number 5767



COUNTY SURVEYOR'S STATEMENT

This Corner Record was received NOVEMBER 14, 2002 and examined and filed NOVEMBER 14, 2002

Signed [Signature] Title DEPUTY

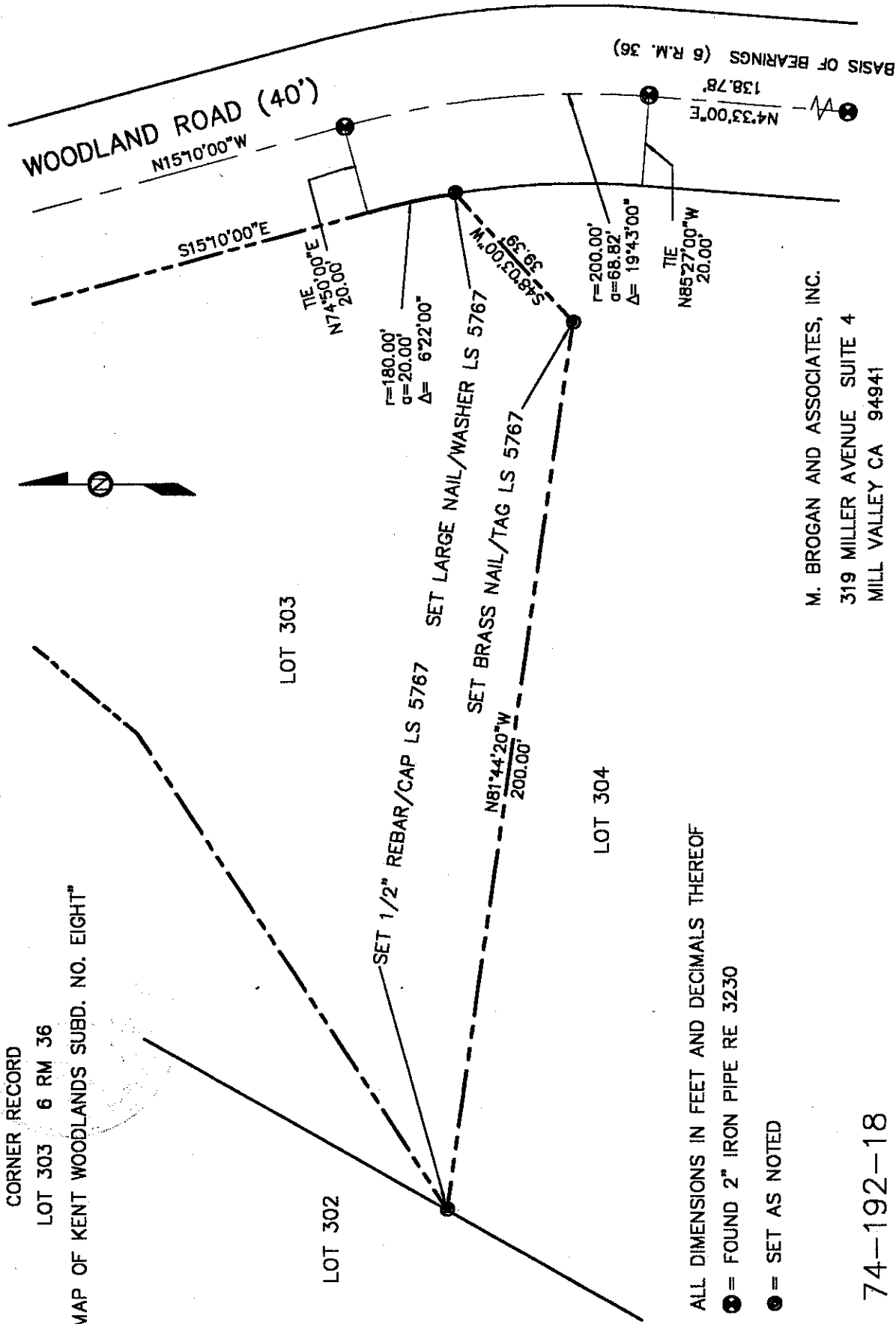


County Surveyor's Comment _____

CORNER RECORD

LOT 303 6 RM 36

"MAP OF KENT WOODLANDS SUBD. NO. EIGHT"



ALL DIMENSIONS IN FEET AND DECIMALS THEREOF

● = FOUND 2" IRON PIPE RE 3230

○ = SET AS NOTED

M. BROGAN AND ASSOCIATES, INC.

319 MILLER AVENUE SUITE 4

MILL VALLEY CA 94941

NOT TO SCALE

APN 74-192-18