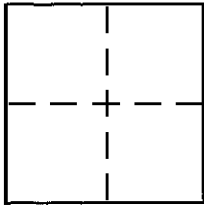


**CORNER RECORD**

Document Number APWD. 074-192-14  
City of KENTFIELD (UNINCORPORATED) County of MARIN, California

Brief Legal Description LOT 291, "MAP OF KENTWOODLANDS SUB. NO. 8, B RM 36B"



**CORNER TYPE**

Government Corner  Control   
Meander  Property   
Rancho  Other   
Date of Survey 1/16/04

**COORDINATES (Optional)**

N. \_\_\_\_\_  
E. \_\_\_\_\_  
Zone \_\_\_\_\_ NAD27  NAD83   
NAD83 Epoch \_\_\_\_\_  
Elev. \_\_\_\_\_  
Vert. Datum: NGVD29  NAVD88   
Meas. Units: Metric  Imperial

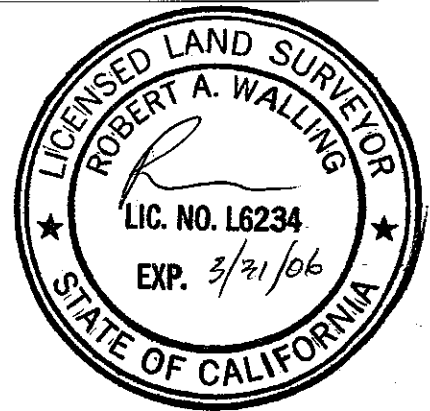
Corner - Left as found  Found and tagged  Established  Reestablished  Rebuilt

Identification and type of corner found: Evidence used to identify or procedure used to establish or reestablish the corner:  
NO PROPERTY CORNERS FOUND. PERFORMED FIELD SURVEY BASED ON FOUND SURVEY MONUMENT ESTABLISHED BY SUBDIVISION. MONUMENT LOCATIONS USED TO CALCULATED LOT 291 CORNERS AND LINE POINTS SET AS SHOWN HEREON.

A description of the physical condition of the monument as found and as set or reset:  
MONUMENTS FOUND WERE UNDISTURBED. SET CORNERS AND LINE POINTS AS INDICATED HEREON.

**SURVEYOR'S STATEMENT**

This Corner Record was prepared by me or under my direction in conformance with the Land Surveyor's Act on Jan. 16 2004  
Signed [Signature] P.L.S. or R.C.E. No. PLS 6234

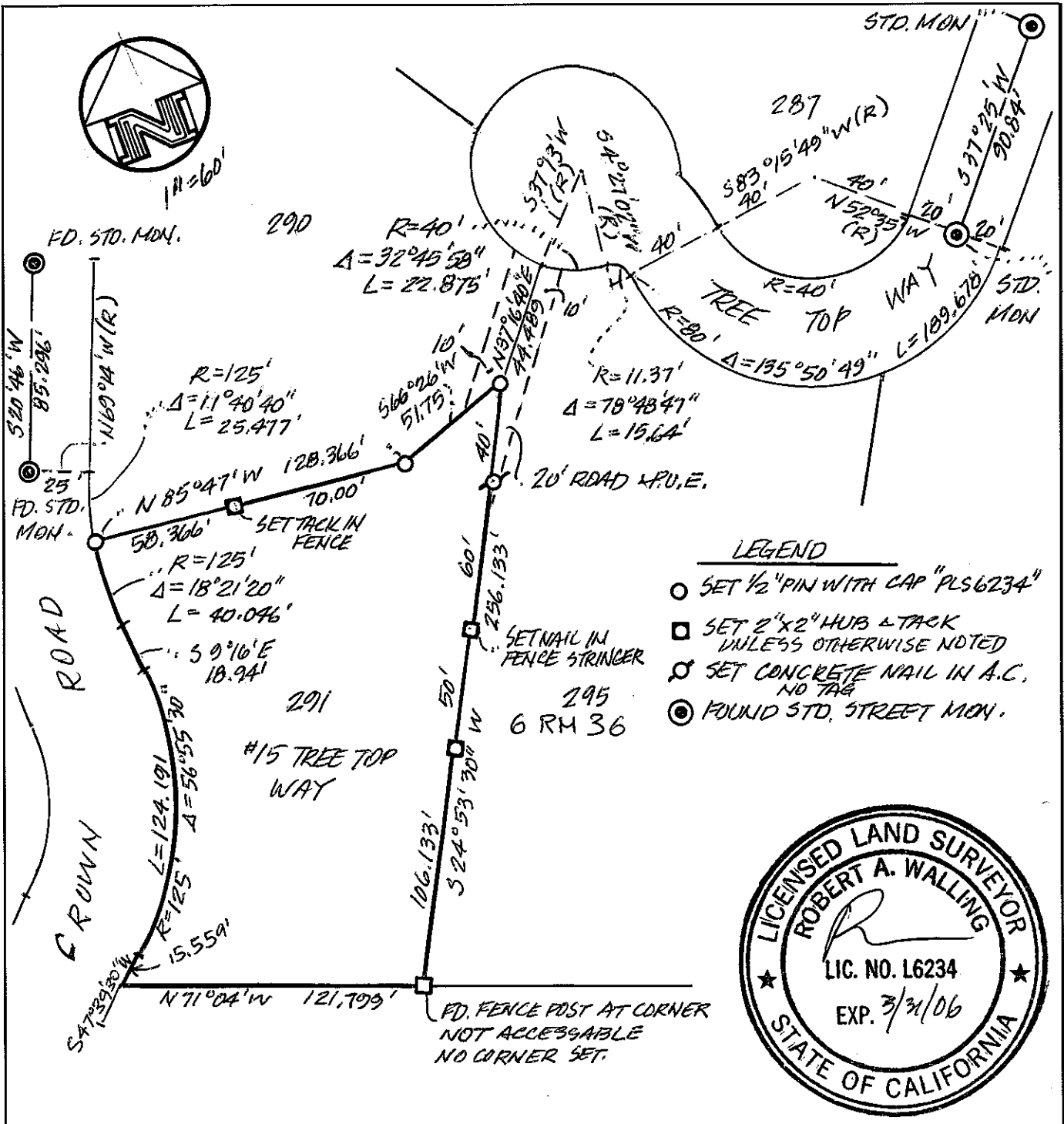


**COUNTY SURVEYOR'S STATEMENT**

This Corner Record was received JANUARY 26, 2004  
and examined and filed JANUARY 27, 2004  
Signed [Signature] P.L.S. or R.C.E. No. 7128  
Title COUNTY SURVEYOR



County Surveyor's Comment \_\_\_\_\_



SURVEY PLAT  
 LOT 291, KENT WOODLANDS B  
 KENTFIELD, MARIN CO., CALIFORNIA  
 6 RM 36  
 APN. 074-192-014



**BOB WALLING TECHNICAL SERVICES**  
 P.O. Box 1346 • Glen Ellen, CA 95442  
 (707) 938-1593 (415) 382-1593

1/19/04

JN.104-02