

CORNER RECORD

AP No. 074-191

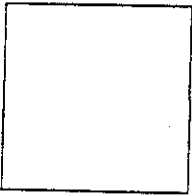
Document Number 6-Maps-36

City of Kentfield

County of Marin

California

Brief legal description Crown Road, Map of Kentwoodlands Subd No. 6 6-Maps-36
Marin County Records



CORNER TYPE

Government corner Control
Meander Property
Rancho Other

Date of Survey 28 June 1997

COORDINATES
(Optional)

N _____
E _____
Zone _____ Datum _____
Elev _____

Corner- Left as found Found and tagged Established Reestablished Rebuilt

Identification and type of corner found. Evidence used to identify or procedure used to establish or reestablish.
Found 1: I.D. iron pipe with nail and tag RE 3230, in centerline of Crown Road per
Map of Kentwoodlands Subd. No. Six, recorded in Book 6 of Maps, at Page 36,
Marin County Records.

A description of the physical condition of the monument as found and as set or reset.
As shown on reverse side. Left as found, save placed Standard Street Monument
hand-hole access ring and cover furnished by the County of Marin.
Three (3) monuments set.

SURVEYOR'S STATEMENT

This Corner Record was prepared by me or under my direction in conformance with
the Land Surveyor's Act on 9 July 1997

Signed Gary Ferwilliger LS or RCE Number LS 6865



COUNTY SURVEYOR'S STATEMENT

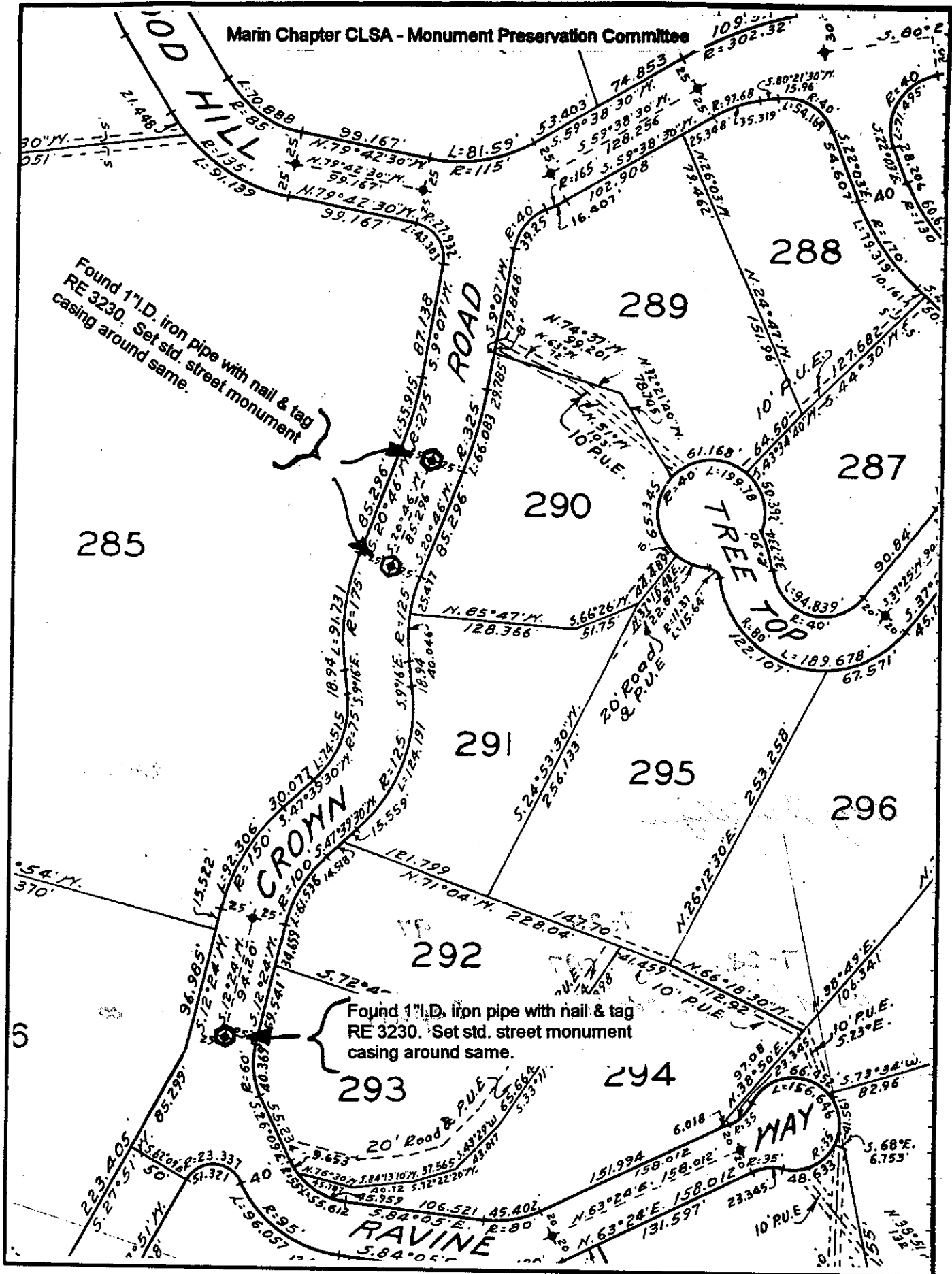
This Corner Record was received 7-25 1997 and examined

and filed 7-28 1997
Signed John M. Woolley Title Deputy



County Surveyor's Comment

Monuments were perpetuated by the following volunteers:
 Phil Danskin, David Harp, Jon Breyfogle & Gary Terwilliger



CORNER RECORD

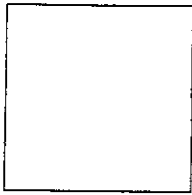
AP No. 074-191

Document Number 6-Maps-36

City of Kentfield

County of Marin, California

Brief legal description Goodhill Road, Map of Kentwoodlands Subd No. 6 6-Maps-36
Marin County Records



CORNER TYPE

Government corner Control
Meander Property
Rancho Other

Date of Survey 28 June 1997

COORDINATES (Optional)

N _____
E _____
Zone _____ Datum _____
Elev _____

Corner- Left as found Found and tagged Established Reestablished Rebuilt

Identification and type of corner found. Evidence used to identify or procedure used to establish or reestablish.
Found 1: I.D. iron pipe with nail and tag RE 3230, in centerline of Goodhill Road per Map of Kentwoodlands Subd. No. Six, recorded in Book 6 of Maps, at Page 36, Marin County Records.

A description of the physical condition of the monument as found and as set or reset.
As shown on reverse side. Left as found, save placed Standard Street Monument hand-hole access ring and cover furnished by the County of Marin.

SURVEYOR'S STATEMENT

This Corner Record was prepared by me or under my direction in conformance with the Land Surveyor's Act on 9 July 1997

Signed Gary Terwilliger LS or RCE Number LS 6865



COUNTY SURVEYOR'S STATEMENT

This Corner Record was received 7-25 1997 and examined

and filed 7-28 1997
Signed John M. Wooley Title Deputy



County Surveyor's Comment

Marin Chapter CLSA - Monument Preservation Committee

