

# CORNER RECORD

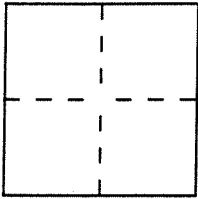
APN 74-181

Document Number 6-Maps-13

City of Vicinity Kentfield

County of Marin, California

Brief Legal Description Diablo Drive, Map of Kentwoodlands Subd. No. Five, 6-Maps-13, Marin Co.  
Records



### CORNER TYPE

Government Corner  Control   
 Meander  Property   
 Rancho  Other   
 Date of Survey 8 March 1997

### COORDINATES (Optional)

N. \_\_\_\_\_  
 E. \_\_\_\_\_  
 Zone \_\_\_\_\_ Datum \_\_\_\_\_  
 Elev. \_\_\_\_\_

Corner — Left as found  Found and tagged  Established  Reestablished  Rebuilt

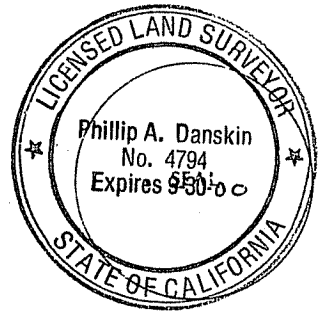
Identification and type of corner found: Evidence used to identify or procedure used to establish or reestablish the corner:  
Found 1" I.D. iron pipe with nail, at centerline of Diablo Drive per Map of Kent Woodlands  
Subd. No. Five, recorded in Book 6 of Maps, at Page 13, Marin County Records.

A description of the physical condition of the monument as found and as set or reset: As shown upon reverse  
side. Left as found, save placed Standard Steel Monument hand-hole access ring and  
cover furnished by the County of Marin.

### SURVEYOR'S STATEMENT

This Corner Record was prepared by me or under my direction in conformance with  
 the Land Surveyors Act on 8 March 1997.

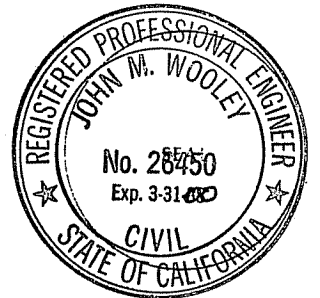
Signed [Signature] L.S. or R.C.E. Number LS 4794



### COUNTY SURVEYOR'S STATEMENT

This Corner Record was received MARCH 19 1997 and examined  
 and filed MARCH 20 1997.

Signed [Signature] Title Deputy Director

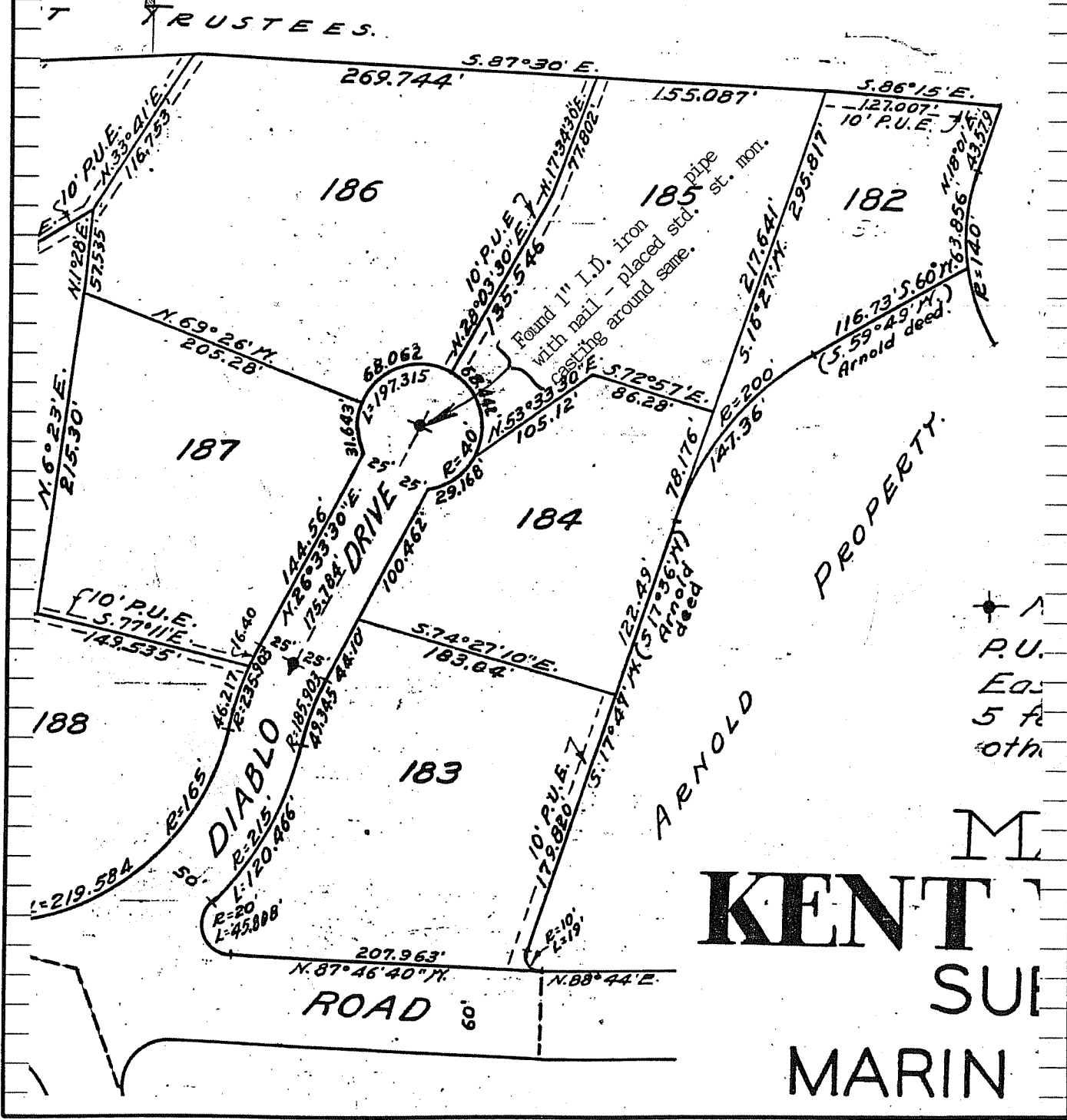
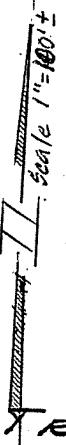


County Surveyor's Comment \_\_\_\_\_

Marin Chapter CLSA - Monument Preservation Committee

This monument was perpetuated by the following volunteers:

- Gary Terwilliger, PLS
- David Harp, PLS
- Phil Danskin, PLS
- Tony Fornos,



M  
**KENT**  
 SUI  
 MARIN