

# CORNER RECORD

APN 74-181

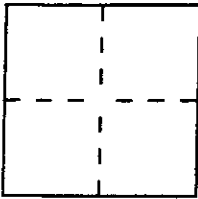
Document Number 6-Maps-23

City of Vicinity Kentfield

County of Marin

California

Brief Legal Description Orchard Way, Map of Kent Woodlands Subd. No. Six, 6-Maps-23, Marin County Records.



### CORNER TYPE

Government Corner  Control   
 Meander  Property   
 Rancho  Other   
 Date of Survey 8 March 1997

### COORDINATES (Optional)

N. \_\_\_\_\_  
 E. \_\_\_\_\_  
 Zone \_\_\_\_\_ Datum \_\_\_\_\_  
 Elev. \_\_\_\_\_

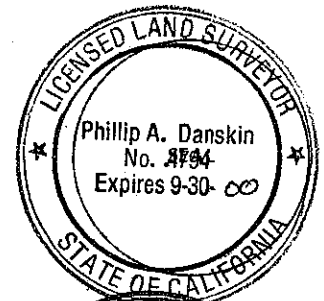
Corner — Left as found  Found and tagged  Established  Reestablished  Rebuilt

Identification and type of corner found: Evidence used to identify or procedure used to establish or reestablish the corner:  
Found 1" I.D. iron pipe with nail & tag "RE 3230", at the centerline of Orchard Way per  
Map of Kent Woodlands Subd. No. Six, recorded in Book 6 of Maps, at Page 23, Marin  
County Records.

A description of the physical condition of the monument as found and as set or reset: As shown upon reverse  
side. Left as found, save placed Standard Street Monument hand-hole access ring and  
cover furnished by the County of Marin.

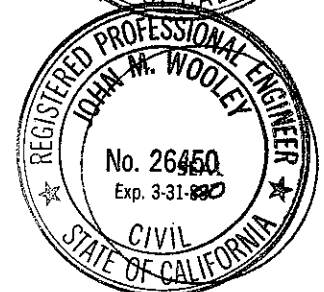
### SURVEYOR'S STATEMENT

This Corner Record was prepared by me or under my direction in conformance with  
 the Land Surveyors' Act on 8 March 1997.  
 Signed [Signature] L.S. or R.E. Number 69 4794



### COUNTY SURVEYOR'S STATEMENT

This Corner Record was received MARCH 19 1997 and examined  
 and filed MARCH 20 1997.  
 Signed [Signature] Title Deputy Director



County Surveyor's Comment \_\_\_\_\_



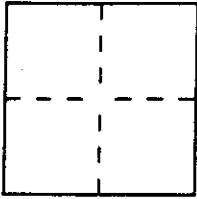
# CORNER RECORD

APN 74-181

Document Number 6-Maps 23

City of Vicinity Kentfield County of Marin, California

Brief Legal Description Orchard Way, Map of Kent Woodlands Subd. NO. Six, 6-Maps-23, Marin Co. Records



### CORNER TYPE

Government Corner  Control   
 Meander  Property   
 Rancho  Other   
 Date of Survey 8 March 1997

### COORDINATES (Optional)

N. \_\_\_\_\_  
 E. \_\_\_\_\_  
 Zone \_\_\_\_\_ Datum \_\_\_\_\_  
 Elev. \_\_\_\_\_

Corner — Left as found  Found and tagged  Established  Reestablished  Rebuilt

Identification and type of corner found: Evidence used to identify or procedure used to establish or reestablish the corner:  
Found 1 1/2" I.D. iron pipe with nail & tag "RE 3230", at centerline of Orchard Way per  
Map of Kent Woodlands Subd. No. Six, recorded in Book 6 of Maps, at Page 23, Marin  
County Records.

A description of the physical condition of the monument as found and as set or reset: As shown upon reverse  
side. Left as found, save placed Standard Steet Monument hand-hole access ring and  
cover furnished by the County of Marin.

### SURVEYOR'S STATEMENT

This Corner Record was prepared by me or under my direction in conformance with  
 the Land Surveyors' Act on 8 March 1997.  
 Signed [Signature] L.S. or ~~C.E.~~ Number 4794

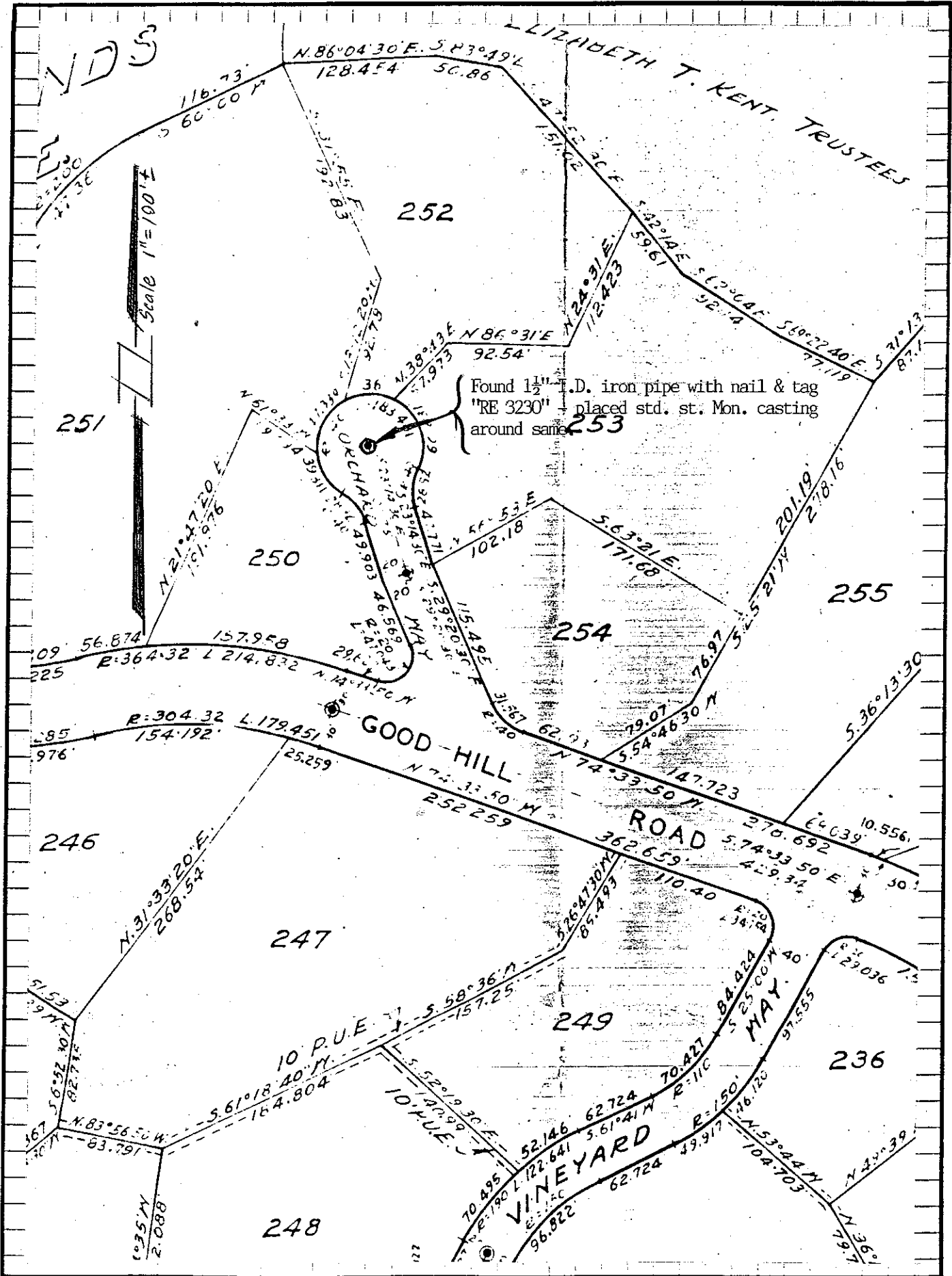


### COUNTY SURVEYOR'S STATEMENT

This Corner Record was received MARCH 19 1997 and examined  
 and filed MARCH 20 1997.  
 Signed [Signature] Title Deputy Director



County Surveyor's Comment \_\_\_\_\_  
 \_\_\_\_\_  
 \_\_\_\_\_



This monument was perpetuated by the following volunteers: Gary Terwilliger, David Harp, Phil Danskin & Tony Fornos

# CORNER RECORD

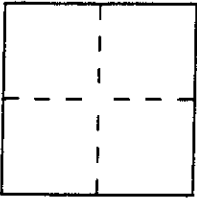
APN 74-181

Document Number 6-Maps-13

City of Vicinity Kentfield

County of Marin, California

Brief Legal Description Diablo Drive, Map of Kentwoodlands Subd. No. Five, 6-Maps-13, Marin Co. Records



### CORNER TYPE

Government Corner  Control   
 Meander  Property   
 Rancho  Other   
 Date of Survey 8 March 1997

### COORDINATES (Optional)

N. \_\_\_\_\_  
 E. \_\_\_\_\_  
 Zone \_\_\_\_\_ Datum \_\_\_\_\_  
 Elev. \_\_\_\_\_

Corner — Left as found  Found and tagged  Established  Reestablished  Rebuilt

Identification and type of corner found: Evidence used to identify or procedure used to establish or reestablish the corner:  
Found 1" I.D. iron pipe with nail, at centerline of Diablo Drive per Map of Kent Woodlands Subd. No. Five, recorded in Book 6 of Maps, at Page 13, Marin County Records.

A description of the physical condition of the monument as found and as set or reset: As shown upon reverse side. Left as found, save placed Standard Steet Monument hand-hole access ring and cover furnished by the County of Marin.

### SURVEYOR'S STATEMENT

This Corner Record was prepared by me or under my direction in conformance with the Land Surveyors Act on 8 March 1997.

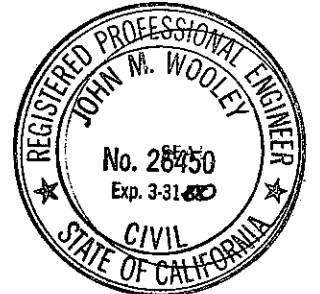
Signed [Signature] L.S. or R.C.E. Number LS 4794



### COUNTY SURVEYOR'S STATEMENT

This Corner Record was received MARCH 19 1997 and examined and filed MARCH 20 1997.

Signed [Signature] Title Deputy Director



County Surveyor's Comment \_\_\_\_\_

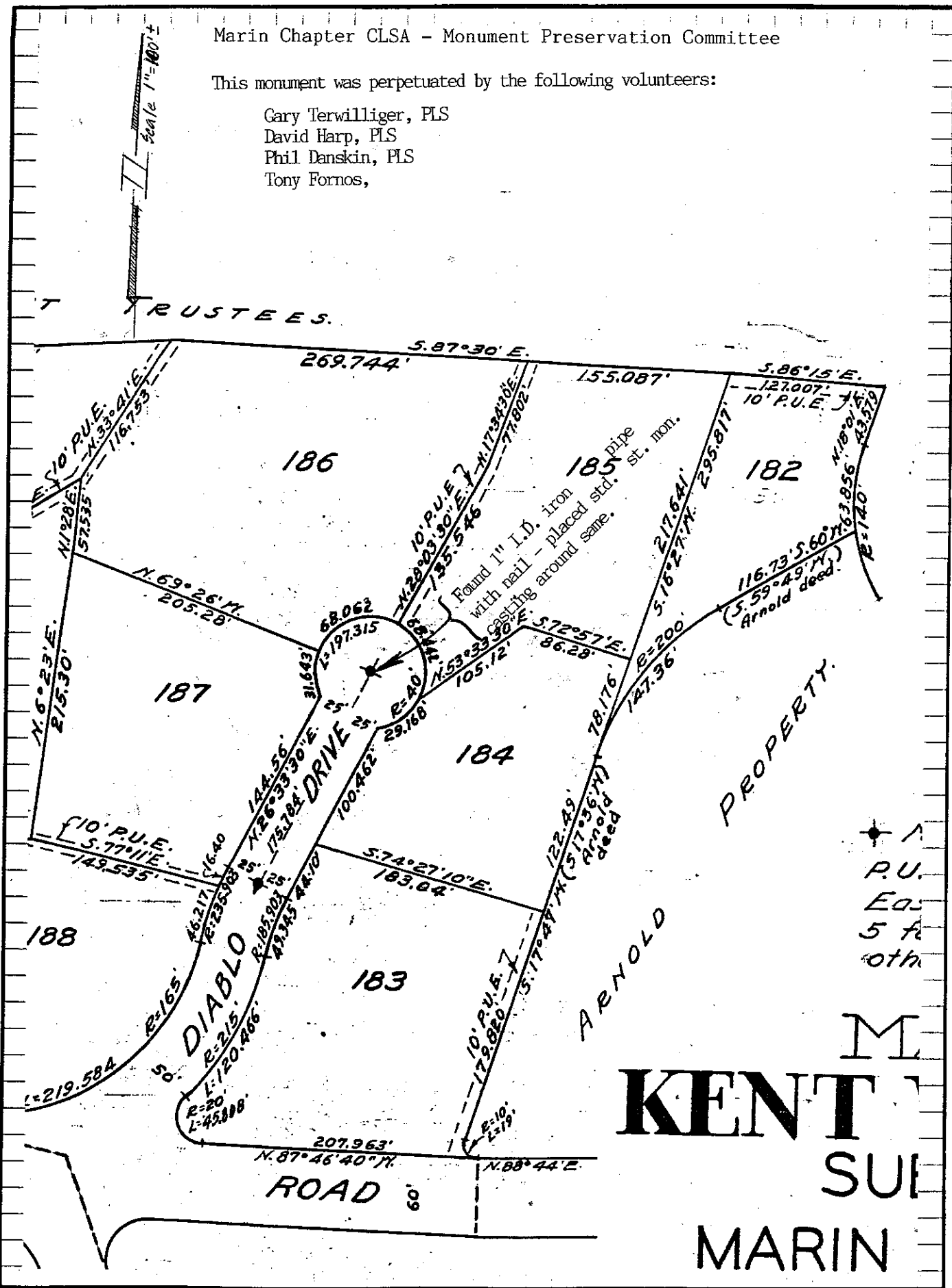
Marin Chapter CLSA - Monument Preservation Committee

This monument was perpetuated by the following volunteers:

- Gary Terwilliger, PLS
- David Harp, PLS
- Phil Danskin, PLS
- Tony Fornos,

Scale 1"=100'

TRUSTEES.



ARNOLD PROPERTY.

+ A  
 P.U.  
 East  
 5 ft  
 other  
  
 M  
**KENTON**  
 SUI  
 MARIN

# CORNER RECORD

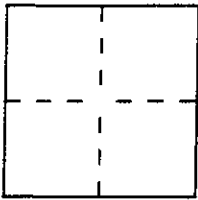
APN 74-181

Document Number 6-Maps-13

City of Vicinity of Kentfield

County of Marin, California

Brief Legal Description Diablo Drive, Map of Kent Woodlands Subd. No. Five, 6-Maps-13, Marin County Records



### CORNER TYPE

Government Corner  Control   
 Meander  Property   
 Rancho  Other   
 Date of Survey 8 March 1997

### COORDINATES (Optional)

N. \_\_\_\_\_  
 E. \_\_\_\_\_  
 Zone \_\_\_\_\_ Datum \_\_\_\_\_  
 Elev. \_\_\_\_\_

Corner — Left as found  Found and tagged  Established  Reestablished  Rebuilt

Identification and type of corner found: Evidence used to identify or procedure used to establish or reestablish the corner: Found 1" I.D. iron pipe with nail & tag "RE 3230", at centerline of Diablo Drive per Map of Kent Woodlands Subd. No. Five, recorded in Book 6 of Maps, at Page 13, Marin County Records

A description of the physical condition of the monument as found and as set or reset: As shown upon reverse side. Left as found, save placed Standard Street Monument hand-hole access ring and cover furnished by the County of Marin.

### SURVEYOR'S STATEMENT

This Corner Record was prepared by me or under my direction in conformance with the Land Surveyors' Act on 8 March 1997.

Signed [Signature] L.S. or R.C.E. Number LS 4794



### COUNTY SURVEYOR'S STATEMENT

This Corner Record was received MARCH 19 1997 and examined and filed MARCH 20 1997.

Signed [Signature] Title Deputy Director



County Surveyor's Comment \_\_\_\_\_  
 \_\_\_\_\_  
 \_\_\_\_\_

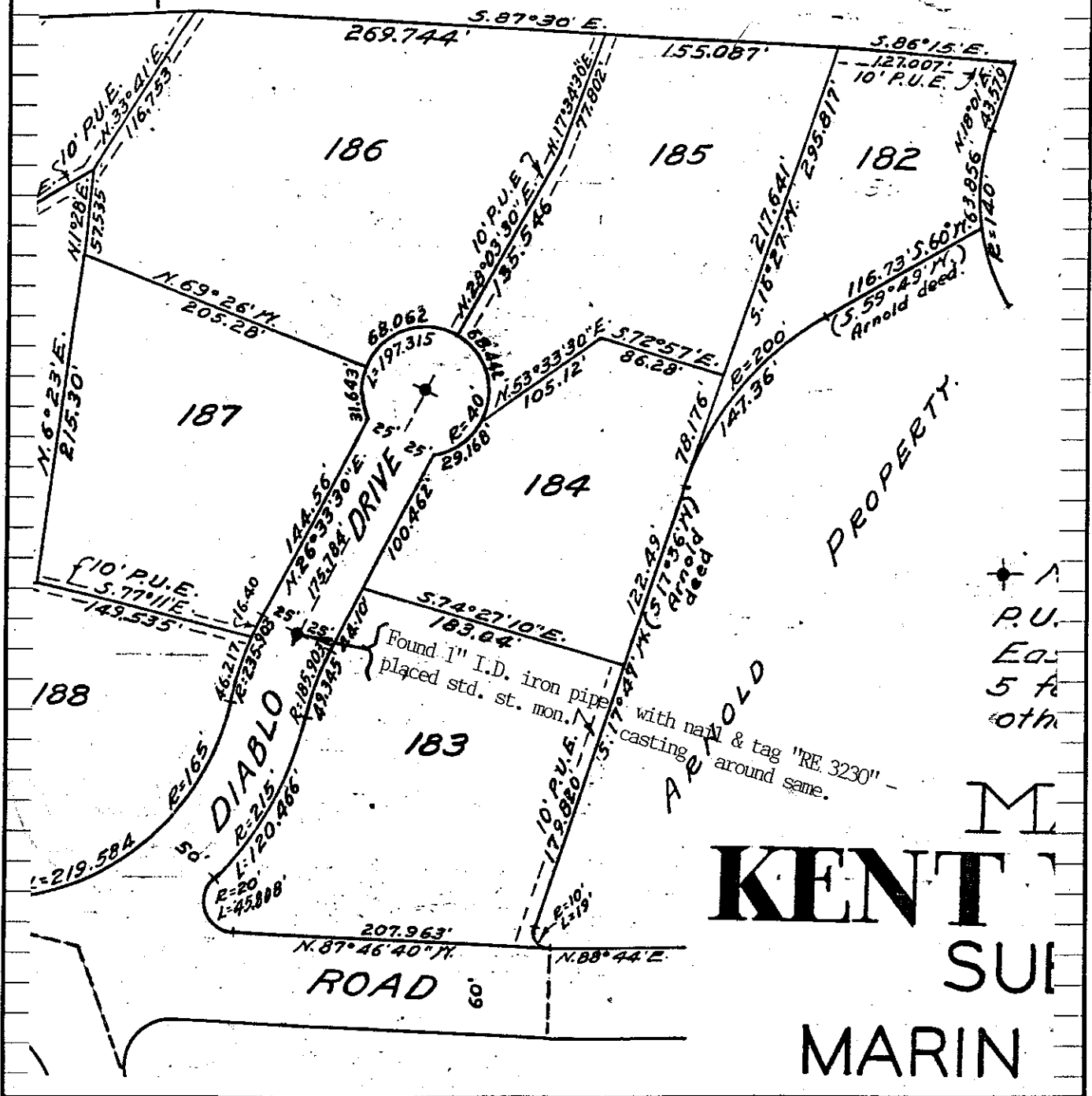
Marin Chapter CLSA - Monument Preservation Committee

This monument was perpetuated by the following volunteers:

Gary Terwilliger, PLS  
David Harp, PLS  
Phil Danskin, PLS  
Tony Fornos



T RUSTEES.



+ A  
P.U.  
Eos  
5 ft  
oth

M  
**KENT**  
SUI  
MARIN