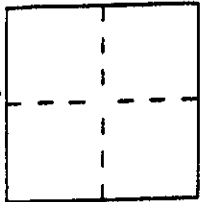


CORNER RECORD

Document Number APN 74-171-04

City of KENTFIELD County of MARIN, California

Brief Legal Description LOT 260, 6 RM 32A APN 74-171-04



CORNER TYPE

COORDINATES (Optional)

Government Corner  Control   
Meander  Property   
Rancho  Other   
Date of Survey 8/5/98

N. \_\_\_\_\_  
E. \_\_\_\_\_  
Zone \_\_\_\_\_ Datum \_\_\_\_\_  
Elev. \_\_\_\_\_

Corner — Left as found  Found and tagged  Established  Reestablished  Rebuilt

Identification and type of corner found: Evidence used to identify or procedure used to establish or reestablish the corner:  
FOUND STANDARY STREET MONUMENT CASINGS WITH IRON PIPE MONUMENTS. FOUND 3/4" IRON PIPE CORNER MONUMENTS. USED STREET MONUMENTS FOR LOT LOCATION AND SUBSEQUENT FIELD MEASURE OF FOUND CORNERS AND FOR SETTING CORNERS AS INDICATED HEREON.

A description of the physical condition of the monument as found and as set or reset:  
ALL MONUMENTS APPEARED UNDISTURBED.

SURVEYOR'S STATEMENT

This Corner Record was prepared by me or under my direction in conformance with

the Land Surveyors' Act on AUG. 5 1998.

Signed [Signature] L.S. or R.C.E. Number PLS6234

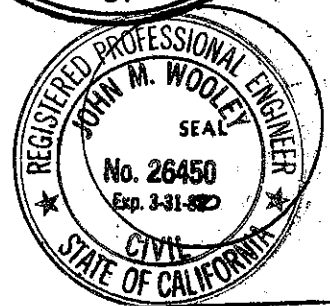


COUNTY SURVEYOR'S STATEMENT

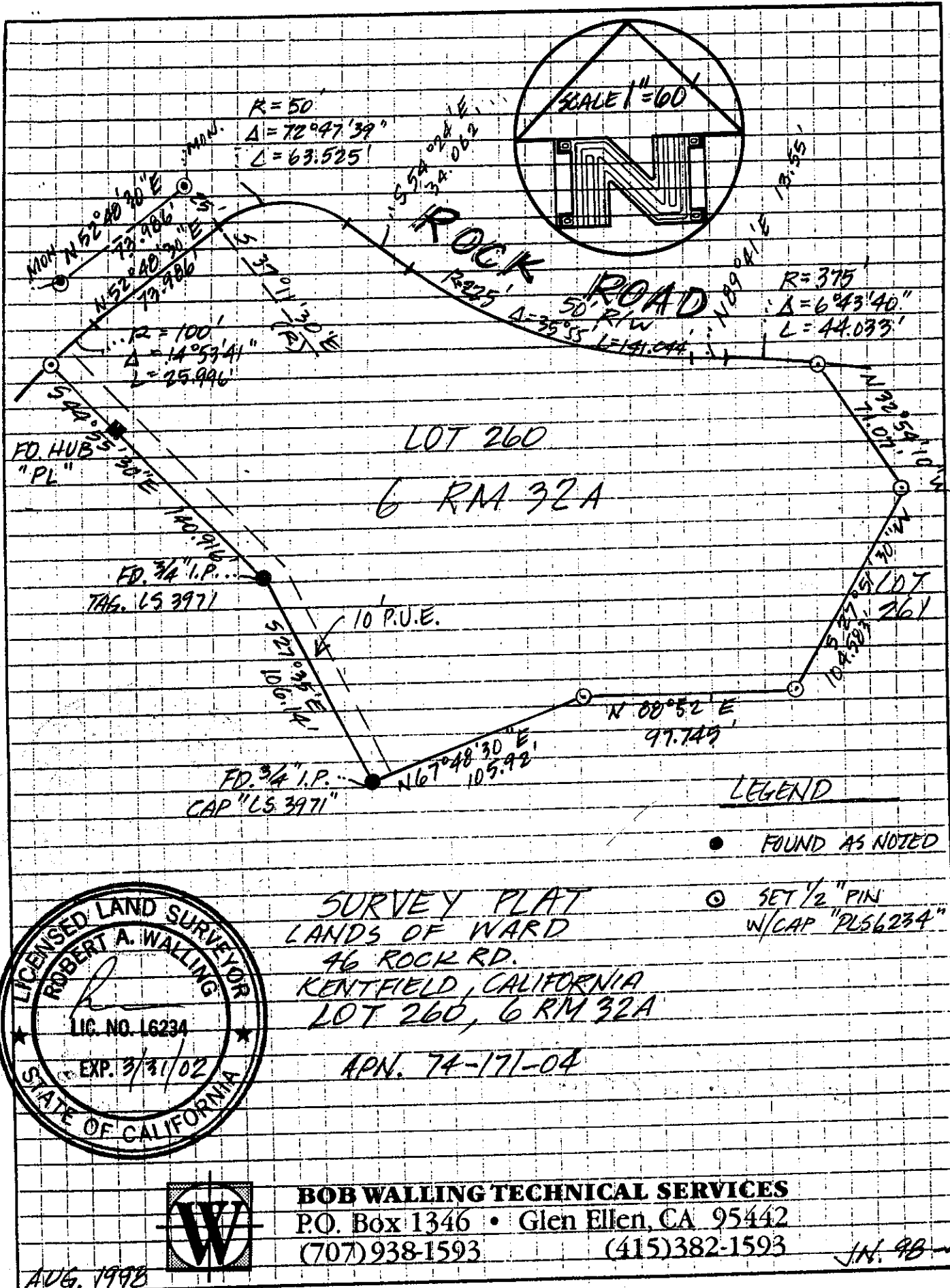
This Corner Record was received AUGUST 14 1998 and examined

and filed AUGUST 18 1998.

Signed John M. Wooley Title DEPUTY



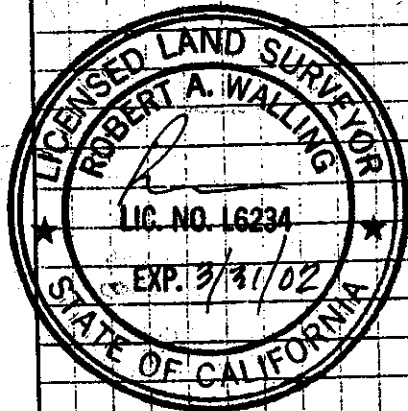
County Surveyor's Comment \_\_\_\_\_  
\_\_\_\_\_  
\_\_\_\_\_



R=50'  
 $\Delta = 72^{\circ}47'39''$   
 $L = 63.525'$

R=100'  
 $\Delta = 14^{\circ}53'41''$   
 $L = 25.996'$

R=375'  
 $\Delta = 6^{\circ}43'40''$   
 $L = 44.033'$



**SURVEY PLAT**  
**LANDS OF WARD**  
**46 ROCK RD.**  
**KENTFIELD, CALIFORNIA**  
**LOT 260, 6 RM 32A**



**BOB WALLING TECHNICAL SERVICES**  
 P.O. Box 1346 • Glen Ellen, CA 95442  
 (707) 938-1593 (415) 382-1593

AUG. 1998

JN. 98-46