

CORNER RECORD

Document Number A.P.# 074-171-03

City of KENTFIELD

County of MARIN, California

Brief Legal Description LOT 211 6 R.M. 13

CORNER TYPE

Government Corner Control
 Meander Property
 Rancho Other
 Date of Survey 7/25/02

COORDINATES (Optional)

N. _____
 E. _____
 Zone _____ NAD27 NAD83
 NAD83 Epoch _____
 Elev. _____
 Vert. Datum: NGVD29 NAVD88
 Meas. Units: Metric Imperial

Corner- Left as found Found and tagged Established Reestablished Rebuilt

Identification and type of corner found: Evidence used to identify or procedure used to establish or reestablish the corner:
ESTABLISHED PROPERTY CORNERS BASED ON FOUND CORNERS AND STREET MONUMENTS PER 6 R.M. 32

A description of the physical condition of the monument as found and as set or reset: SEE SHEET 2.

SURVEYOR'S STATEMENT

This Corner Record was prepared by me or under my direction in conformance with

the Land Surveyor's Act on JULY 29 2002

Signed Lawrence P. Doyle P.L.S. or R.C.E. No. P.L.S. 4694



COUNTY SURVEYOR'S STATEMENT

This Corner Record was received AUGUST 2, 2002

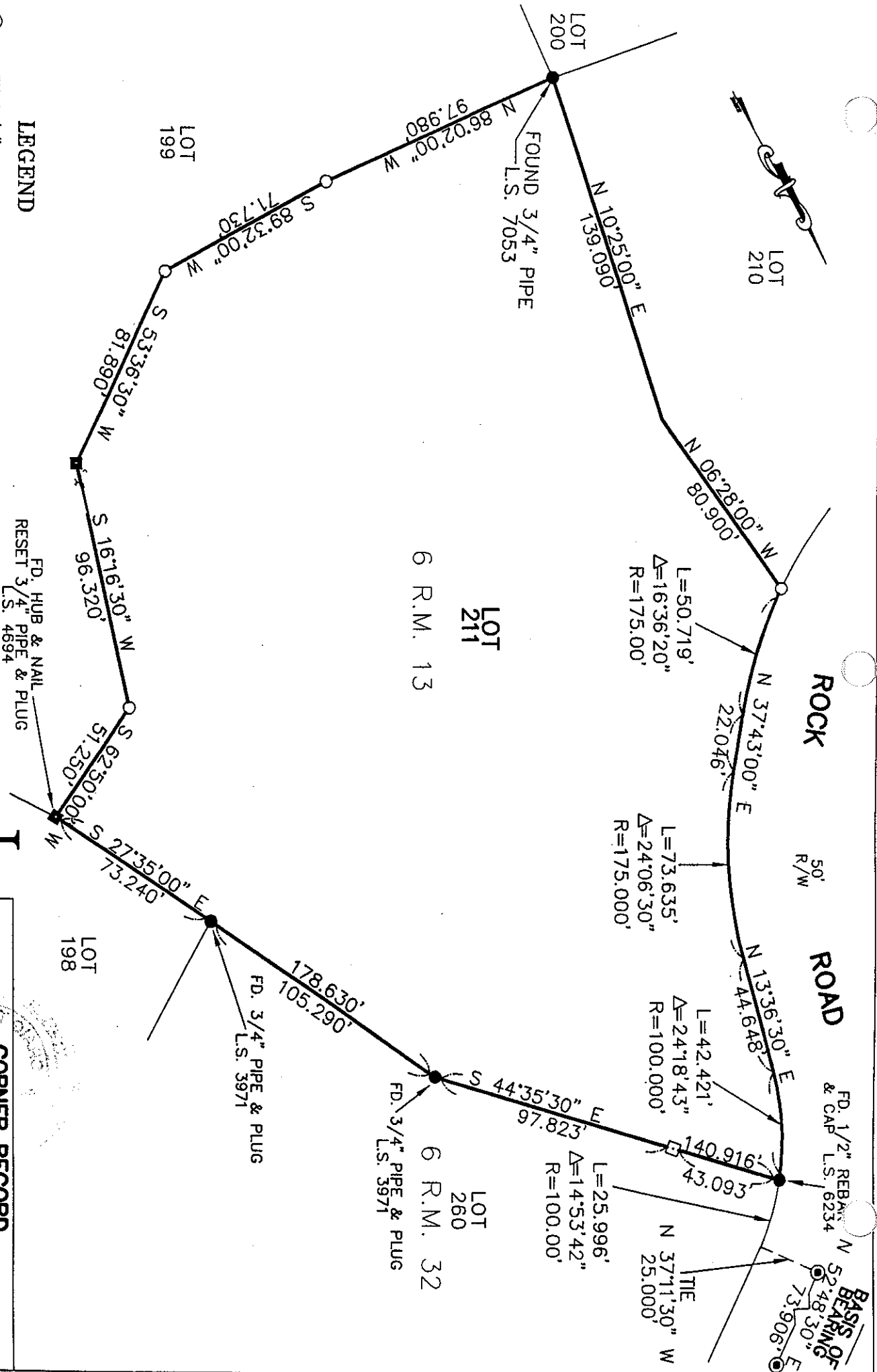
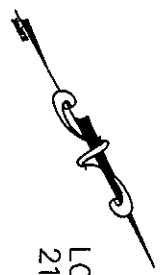
and examined and filed AUGUST 12, 2002

Signed [Signature] P.L.S. or R.C.E. No. 7128

Title DEPUTY



County Surveyor's Comment _____



LEGEND

- SET 3/4" PIPE & PLUG L.S. 4694
- FD. 3/4" PIPE (UNLESS NOTED)
- SET HUB & TAG L.S. 4694
- FD. HUB & TAG L.S. 2738
- ⊙ FD. STREET MONUMENT 6 R.M. 32

BASIS OF BEARING

THE BASIS OF BEARING IS N 52°48'30" E BETWEEN FOUND MONUMENTS PER 6 R.M. 32



CORNER RECORD
 LOT 211 6 R.M. 13
 KENTFIELD MARIN COUNTY CALIFORNIA

LAWRENCE P. DOYLE
 LAND SURVEYOR/CIVIL ENGINEER
 P.O. BOX 1609 MILL VALLEY CA 94942 (415-388-9585)

SCALE: 1" = 50'
 DATE: 7/25/02
 DRAWN BY:
 SHEET 2 OF 2
 DRAWING NO. 580-98