

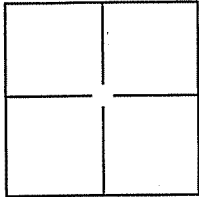
CORNER RECORD

Document Number A.P.N. 074-151-03

-City of Kentfield

County of Marin, California

Brief Legal Description Lot 220, Map of Kent Woodlands, 22 Spring Road, 6 R.M.13



CORNER TYPE

Government Corner Control
 Meander Property
 Rancho Other

Date of Survey 14 August 2008

COORDINATES(Optional)

N. _____
 E. _____
 Zone _____ NAD27 NAD83
 NAD83 Epoch _____
 Elev. _____
 Vert. Datum: NGVD29 NADV88
 Meas. Units: Metric Imperial

Corner - Left as found Found and tagged Established Reestablished Rebuilt

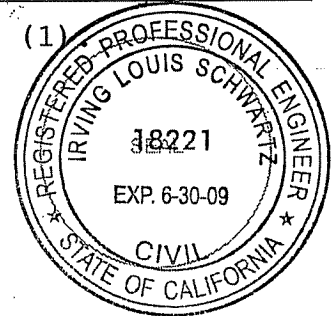
Identification and type of corner found: Evidence used to identify or procedure used to establish or reestablish the corner:
Found Standard Street Monuments (2), along Spring Road in Kentfield
per 6R.M.13.

A description of the physical condition of the monument as found and as set or reset: _____
Set 3/4" iron pipes (1 at NE corner, 1 at Westerly Corner), five Ginney
points (2 Southwesterly line, 1 on Southeasterly line and 1 on Easterly
line), 2 Mag Nails in driveway on Westerly line, set brass tag and nail
(1 at NW corner and 1 at SE corner), found Mag Nail and brass tag in rock
at Southern corner (1), set lath along Southwesterly line (1)

SURVEYOR'S STATEMENT

This Corner Record was prepared by me or under my direction in conformance with
 the Land Surveyor's Act on AUGUST 20, 2008.

Signed [Signature] P.L.S. or R.C.E. No.: 18221



COUNTY SURVEYOR'S STATEMENT

This Corner Record was received AUGUST 21, 2008 and examined
 and filed SEPTEMBER 12, 2008.

Signed [Signature] P.L.S. or R.C.E. No.: 7128

Title COUNTY SURVEYOR

County Surveyor's Comment _____

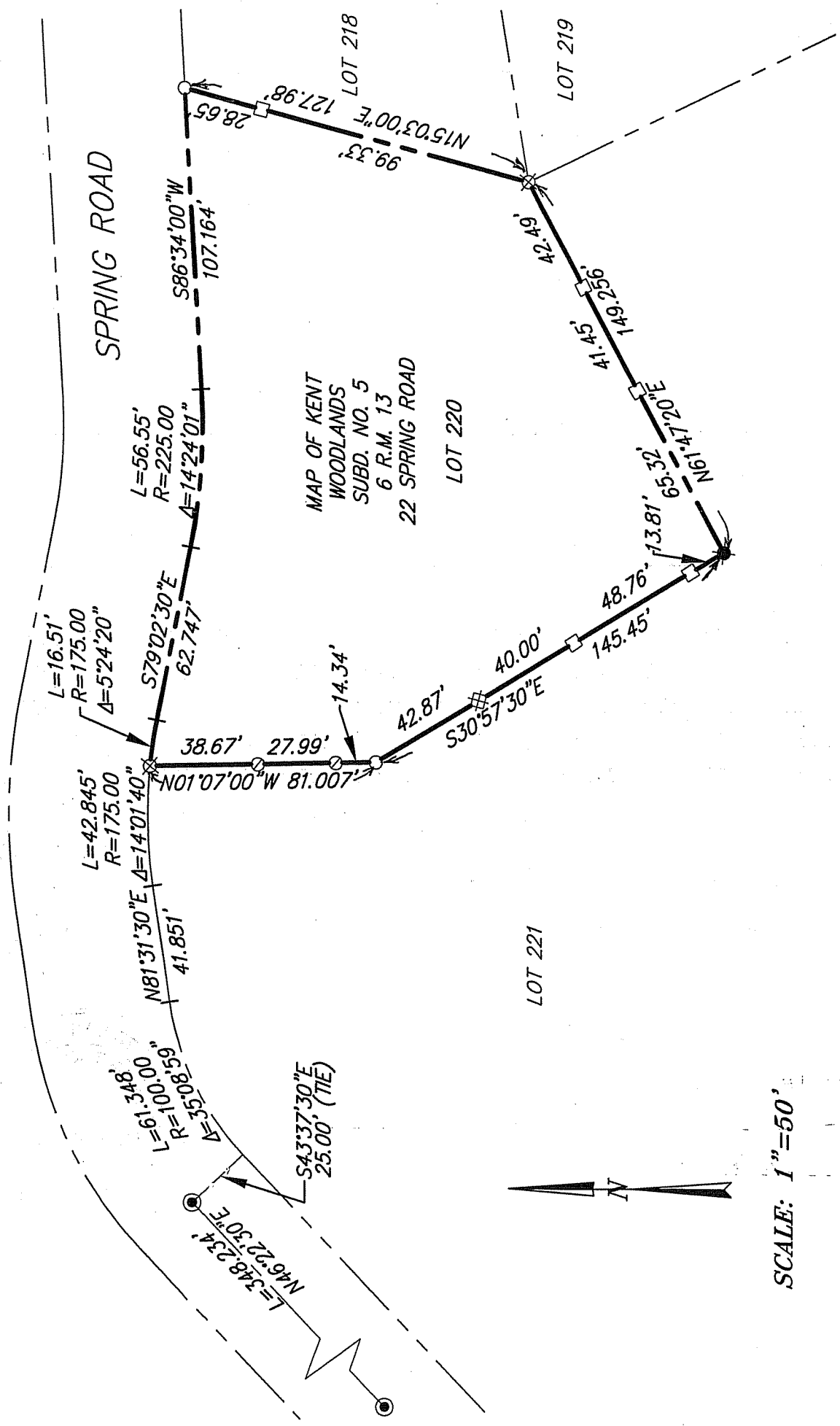


SPRING ROAD

MAP OF KENT
WOODLANDS
SUBD. NO. 5
6 R.M. 13
22 SPRING ROAD
LOT 220

LOT 219

LOT 221



SCALE: 1" = 50'

LEGEND

- SET 3/4" IRON PIPE & YELLOW CAP "R.C.E. 18221"
- ⊗ SET BRASS TAG & NAIL "R.C.E. 18221"
- SET GINNEY - POINT ON PROPERTY LINE
- SET MAG NAIL IN A.C. DRIVEWAY - POINT ON PROPERTY LINE
- FOUND STANDARD STREET MONUMENT
- ⊕ FOUND MAG NAIL & BRASS TAG IN ROCK 1.5. 5814" NO RECORD
- ⊕ SET LATH IN COMPOST PILE - POINT ON PROPERTY LINE

NOTE:
ALL DIMENSIONS AND BEARINGS
SHOWN HEREON ARE PER 6 R.M. 13.

EXHIBIT "A"



ILS ASSOCIATES, INC.®
CIVIL ENGINEERING AND LAND SURVEYING

70 GALLUP DRIVE SUITE A NOVATO, CA 94946-5177 (415) 883-6200 FAX (415) 883-2703

DATE: 08/19/2008
FILE: N:\P8000\82981.dwg 18298CR.dwg

A.P.N. 074-151-03