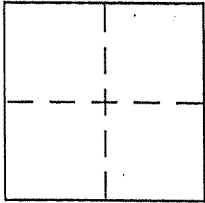


CORNER RECORD

Document Number APN 074-121-10
County of MARIN, California

VICINITY City of KENTFIELD

Brief Legal Description LOT 46 PER 8 R.M.S



CORNER TYPE

Government Corner Control
Meander Property
Rancho Other
Date of Survey 5-31-06

COORDINATES (Optional)

N. _____
E. _____
Zone _____ NAD27 NAD83
NAD83 Epoch _____
Elev. _____
Vert. Datum: NGVD29 NAVD88
Meas. Units: Metric Imperial

Corner - Left as found Found and tagged Established Reestablished Rebuilt

Identification and type of corner found: Evidence used to identify or procedure used to establish or reestablish the corner:

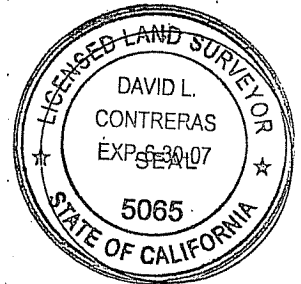
= SEE OVER =

A description of the physical condition of the monument as found and as set or reset:

= SEE OVER =

SURVEYOR'S STATEMENT

This Corner Record was prepared by me or under my direction in conformance with the Land Surveyor's Act on June 2 2006
Signed David Contreras P.L.S or R.C.E. No. 5065



COUNTY SURVEYOR'S STATEMENT

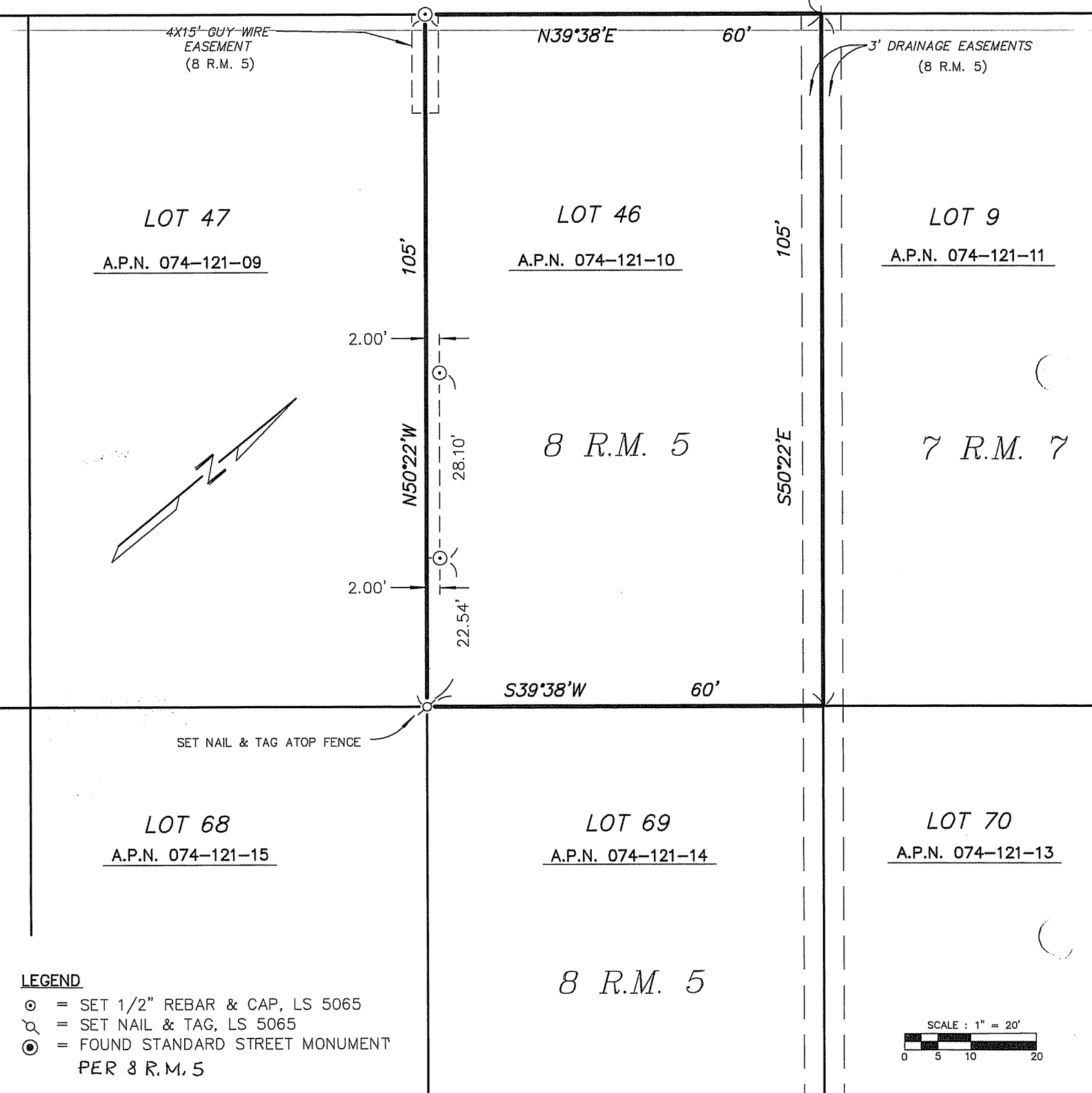
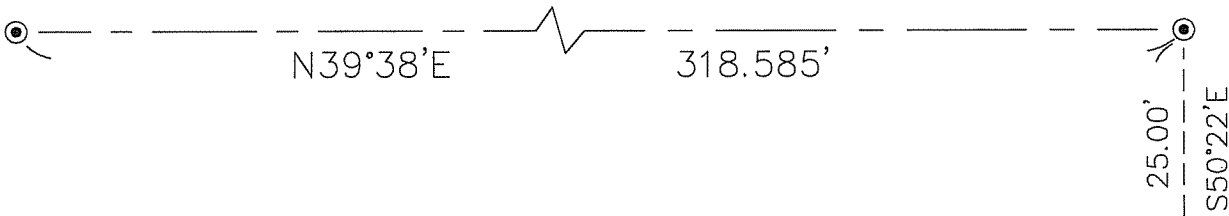
This Corner Record was received JUNE 7, 2006
and examined and filed JULY 18, 2006
Signed _____ P.L.S or R.C.E. No. 7128
Title COUNTY SURVEYOR



County Surveyor's Comment _____

LANCASTER AVENUE

(50' RIGHT-OF-WAY)



4X15' GUY-WIRE
EASEMENT
(8 R.M. 5)

3' DRAINAGE EASEMENTS
(8 R.M. 5)

LOT 47

A.P.N. 074-121-09

LOT 46

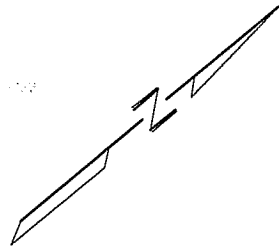
A.P.N. 074-121-10

LOT 9

A.P.N. 074-121-11

8 R.M. 5

7 R.M. 7



SET NAIL & TAG ATOP FENCE

LOT 68

A.P.N. 074-121-15

LOT 69

A.P.N. 074-121-14

LOT 70

A.P.N. 074-121-13

8 R.M. 5

LEGEND

- ⊙ = SET 1/2" REBAR & CAP, LS 5065
- ⊗ = SET NAIL & TAG, LS 5065
- ⊙ = FOUND STANDARD STREET MONUMENT
PER 8 R.M. 5

