

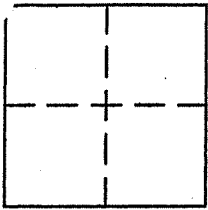
CORNER RECORD

Document Number APN 074-121-09

City of KENTFIELD

County of MARIN, California

Brief Legal Description LOT 47, 8 RM 5, KENTFIELD GARDENS SUB. 3



CORNER TYPE

Government Corner Control
Meander Property
Rancho Other
Date of Survey MARCH 2, 2008

COORDINATES (Optional)

N. _____
E. _____
Zone _____ NAD27 NAD83
NAD83 Epoch _____
Elev. _____
Vert. Datum: NGVD29 NAVD88
Meas. Units: Metric Imperial

Corner - Left as found Found and tagged Established Reestablished Rebuilt

Identification and type of corner found: Evidence used to identify or procedure used to establish or reestablish the corner:

FOUND STD. ST. MONUMENTS PER 8 RM 5 AND FOUND MONUMENTS, (REBAR & CAP LS 5065 & TAG LS 5065 ON FENCE)

AS SHOWN ON CORNER RECORD BY CONTRERAS FOR APN 074-121-10 (LOT 46) AS SHOWN ON REVERSE.

A description of the physical condition of the monument as found and as set or reset: SET HUB AND TAG PLS 5296 AND

SET TACKS WITH TAG PLS 5296 ON FENCES AT PROPERTY CORNERS AND ON PROPERTY LINES AS SHOWN ON REVERSE.

SURVEYOR'S STATEMENT

This Corner record was prepared by me or under my direction in conformance with the Land Surveyor's Act of MARCH 5, 2008

Signed [Signature] P.L.S. or R.C.E. No. PLS 5296

COUNTY SURVEYOR'S STATEMENT

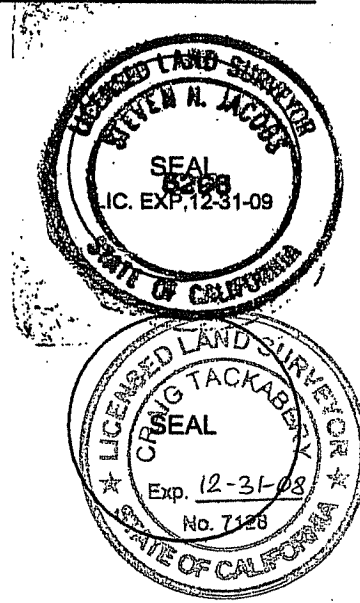
This Corner Record was received APRIL 2, 2008

and examined and filed MAY 8, 2008

Signed [Signature] P.L.S. or R.C.E. No. 7128

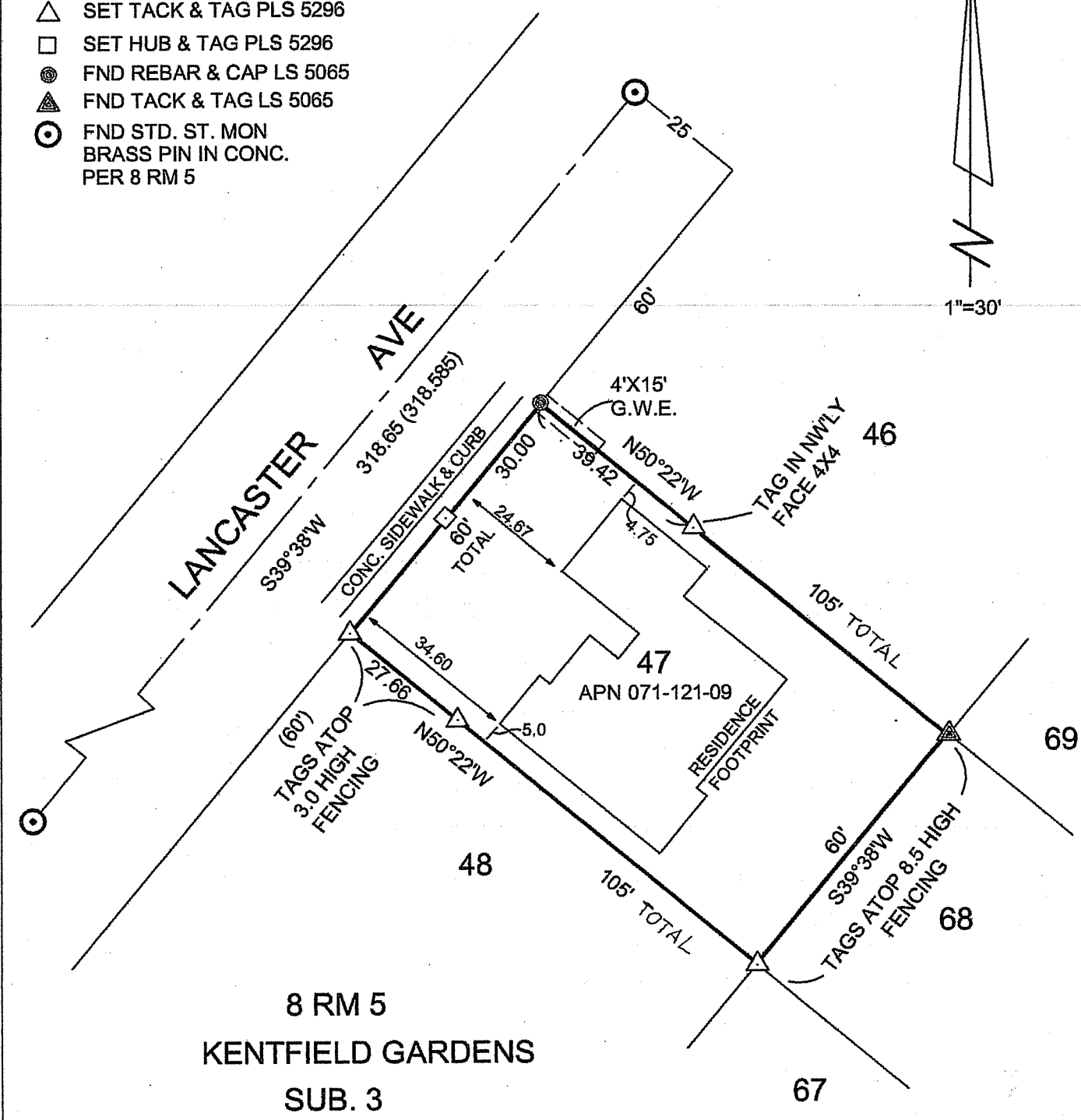
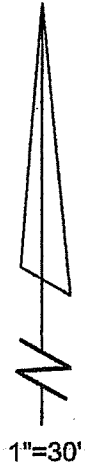
Title COUNTY SURVEYOR

County Surveyor's Comment _____



LEGEND

- △ SET TACK & TAG PLS 5296
- SET HUB & TAG PLS 5296
- FND REBAR & CAP LS 5065
- ▲ FND TACK & TAG LS 5065
- ⊙ FND STD. ST. MON
BRASS PIN IN CONC.
PER 8 RM 5



SEE CORNER RECORD BY CONTRERAS APN 074-121-10 (LOT 46)