

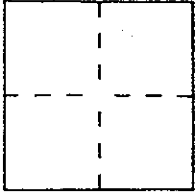
# CORNER RECORD

Document Number A.P.N. 074-112-24

City of Kentfield

County of Marin, California

Brief Legal Description Lot 32 Kentfield Gardens Subdivision No. 2 7 RM 81



### CORNER TYPE

Government Corner  Control   
 Meander  Property   
 Rancho  Other   
 Date of Survey July 22, 2003

### COORDINATES (Optional)

N. \_\_\_\_\_  
 E. \_\_\_\_\_  
 Zone \_\_\_\_\_ Datum \_\_\_\_\_  
 Elev. \_\_\_\_\_

Corner — Left as found  Found and tagged  Established  Reestablished  Rebuilt

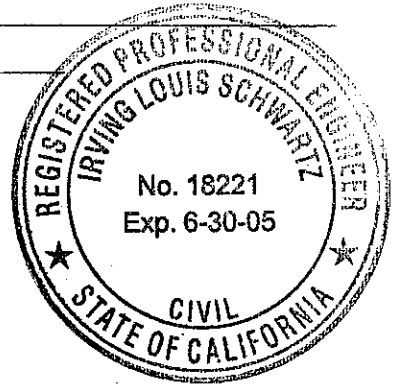
Identification and type of corner found: Evidence used to identify or procedure used to establish or reestablish the corner:  
Found standard street monuments on the centerline of Sherwood Court and Berens Drive per 7 RM 81.

A description of the physical condition of the monument as found and as set or reset: \_\_\_\_\_  
Set 3/4" I.P. & tag RCE 18221 unless shown otherwise on Exhibit A.

### SURVEYOR'S STATEMENT

This Corner Record was prepared by me or under my direction in conformance with the Land Surveyors' Act on JULY 31 2003

Signed [Signature] or R.C.E. Number 18221



### COUNTY SURVEYOR'S STATEMENT

This Corner Record was received AUGUST 5, 2003 and examined and filed AUGUST 18, 2003.

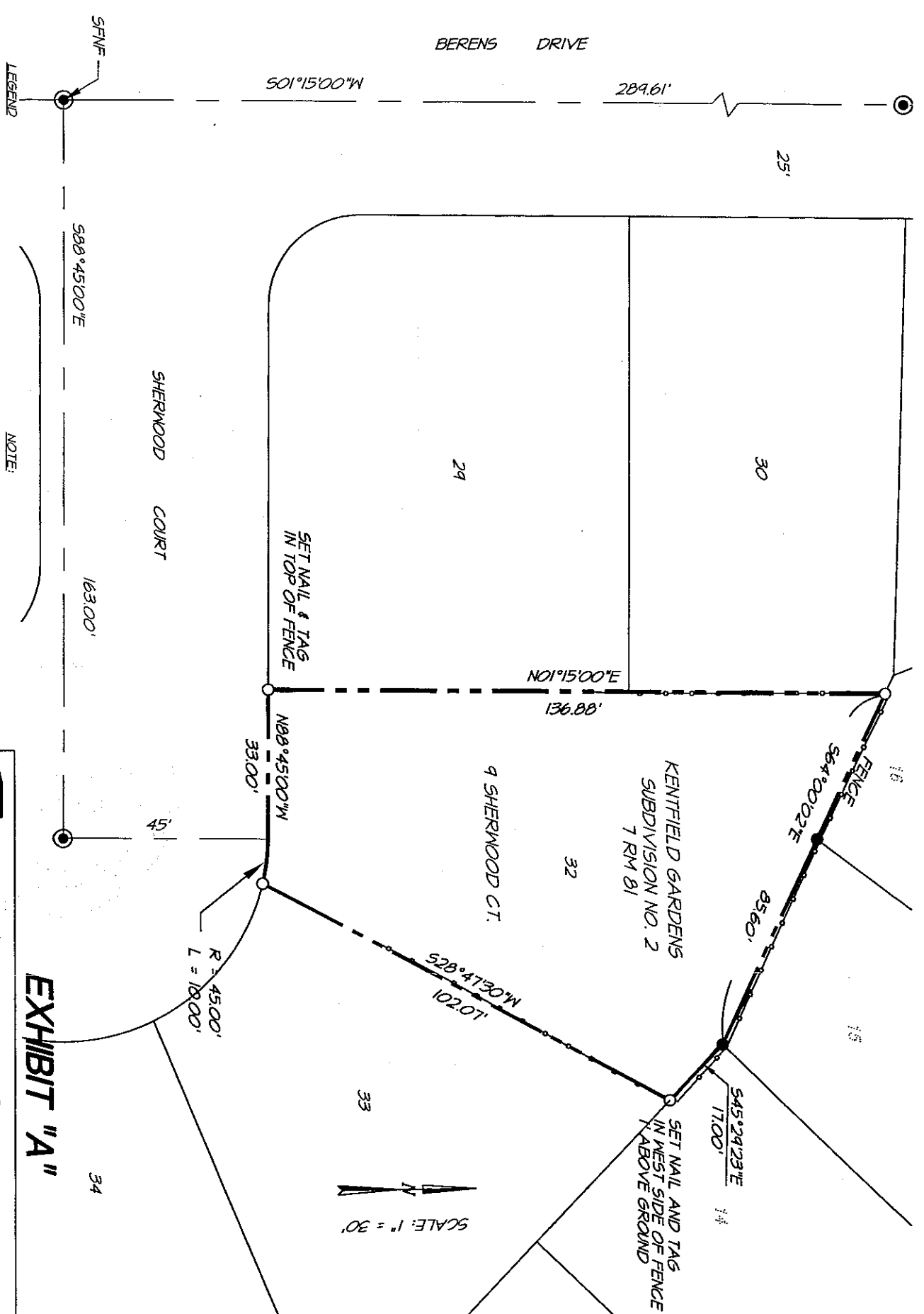
Signed [Signature] Title COUNTY SURVEYOR



County Surveyor's Comment \_\_\_\_\_

N:\PROJ2\7543\dwg\7543SVY.dwg, 07/31/2003 07:33:08 AM, T.L. Schwartz Assoc. - J. Fleiser

DATE: 07/28/03  
FILE: 7543SVY.DWG



LEGEND

- FOUND STANDARD STREET MONUMENT
- FOUND IP AND TAG "R.C.E. 30465"
- SET 3/4" IRON PIPE & TAG "R.C.E. 18221"
- UNLESS NOTED OTHERWISE

NOTE:

ALL DIMENSIONS SHOWN HEREON ARE PER 7 RM B1 UNLESS OTHERWISE NOTED.

A.P.N. 074-112-24



ILS ASSOCIATES, INC. ©  
CIVIL ENGINEERING AND LAND SURVEYING

70 GULL DRIVE, SUITE A NOVATO, CA 94949-8717 (916) 895-8800 FAX (916) 895-8783

EXHIBIT "A"