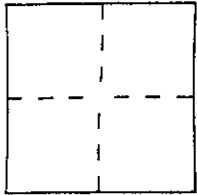


CORNER RECORD

Document Number A.P. 074-111-11

City of KENTFIELD County of MARIN, California

Brief Legal Description LOT 98 8 R.M.S



CORNER TYPE

Government Corner Control
Meander Property
Rancho Other
Date of Survey _____

COORDINATES
(Optional)

N. _____
E. _____
Zone _____ Datum _____
Elev. _____

Corner — Left as found Found and tagged Established Reestablished Rebuilt

Identification and type of corner found: Evidence used to identify or procedure used to establish or reestablish the corner:

REESTABLISHED THE PROPERTY CORNERS FROM
THE STREET MONUMENTS SHOWN ON
8 R.M.S

A description of the physical condition of the monument as found and as set or reset:

SET 3/4" PIPES & PLUGS STAMPED P.L.S. 4694

SURVEYOR'S STATEMENT

This Corner Record was prepared by me or under my direction in conformance with the Land Surveyors' Act on OCTOBER 25 2000.

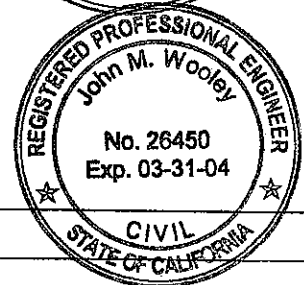
Signed Lawrence P. Doyle L.S. or R.C.E. Number P.L.S. 4694.

COUNTY SURVEYOR'S STATEMENT

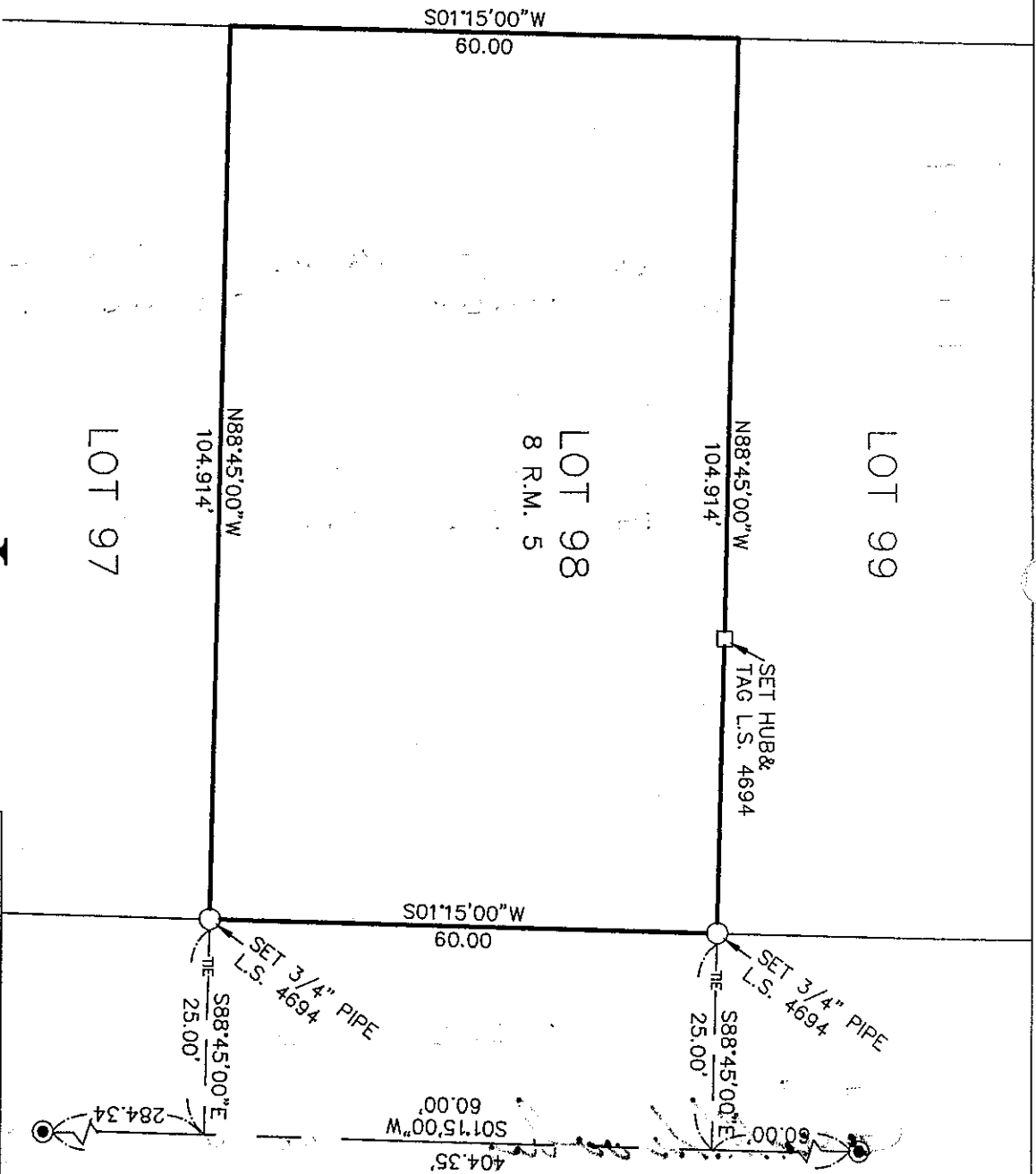
This Corner Record was received NOVEMBER 3, 2000 and examined and filed NOVEMBER 7, 2000.

Signed John M. Woolley Title DEPUTY

County Surveyor's Comment _____



MADERA CREEK CANAL

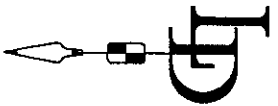


BERENS DRIVE
BASIS OF BEARING



LEGEND
● FD. STREET MONUMENT

BASIS OF BEARING
BEARING OF S01°15'23\"/>



CORNER RECORD	
LOT 98 8 R.M. 5	
KENTFIELD	CALIFORNIA
MARIN COUNTY	
SCALE: 1" = 20'	DRAWN BY: AVB
DATE: 10/12/00	SHEET 1
LAWRENCE P. DOYLE	
LAND SURVEYOR/CIVIL ENGINEER	
P.O. BOX 1609 MILL VALLEY CA 94942 (415-388-9585)	
DRAWING NO.	873-00